

## Excellent Integrated System Limited

Stocking Distributor

Click to view price, real time Inventory, Delivery & Lifecycle Information:

[Bel Fuse Inc.](#)  
[40-9815S](#)

For any questions, you can email us directly:  
[sales@integrated-circuit.com](mailto:sales@integrated-circuit.com)



Description: 98 Series crimp style panel & cable mount  
D-Sub connectors

Part No: 40-9809S

Application: 98 Series D-Sub Connector

Crimp Tool: N/A

Impedance: N/A

Frequency Range: N/A

Material: Shell Steel, Nickel plated  
Insulator PBT+Fiber-grass and nylon-66, UL94-V0 Black

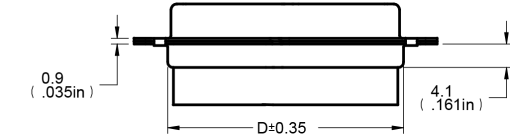
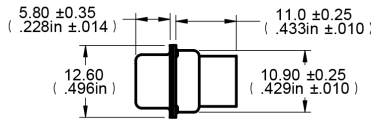
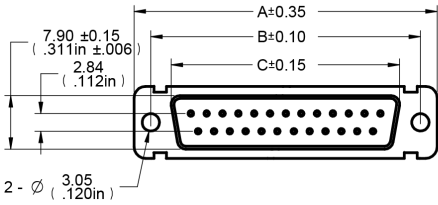
RoHS Compliance: Yes

Technical Detail: N/A

DRAWING NO. 40-9809S-CUST(SEE TABLE I)	
REVISIONS	
01	OFFICIAL RELEASE
02-25-11	J J M

**TABLE I**

Part Number	Description	A (mm)	B (mm)	C (mm)	D (mm)
40-9809S	FEMALE SOCKET, CRIMP STYLE, 9-PIN	30.80	24.99	16.30	19.20
40-9815S	FEMALE SOCKET, CRIMP STYLE, 15-PIN	39.15	33.32	24.65	27.70
40-9825S	FEMALE SOCKET, CRIMP STYLE, 25-PIN	53.00	47.04	38.40	41.10
40-9837S	FEMALE SOCKET, CRIMP STYLE, 37-PIN	69.30	63.50	54.80	57.30



**DIM OUTLINE**

TOLERANCE UNLESS OTHERWISE SPECIFIED	DRAWN BY <b>JEAN.JIN</b>	DATE 02-25-11
DECIMALS	CHECKED BY <b>JEAN.JIN</b>	DATE 02-25-11
X ± 0.5	APPROVED BY <b>LIN.MA</b>	DATE 02-25-11
X.X ± 0.3	U/M	mm
X.XX ± 0.2		
ANGLES ± 0.5°		

**CUSTOMER COPY**



TITLE  
98 SERIES CRIMP STYLE PANEL & CABLE MOUNT D-SUB CONNECTORS

THIS DRAWING WAS PRODUCED BY COMPUTER, DO NOT SCALE DRAWING OR UPDATE MANUALLY.

SHEET 1 OF 1	DRAWING NO. 40-9809S-CUST (SEE TABLE I)	SIZE A
-----------------	---	-----------