



Distributor of Conec: Excellent Integrated System Limited

Datasheet of DLS3XS6AK44X - D-Sub Connector Receptacle, Female Sockets 25 Position
Through Hole, Right Angle Solder

Contact us: sales@integrated-circuit.com Website: www.integrated-circuit.com

Excellent Integrated System Limited

Stocking Distributor

Click to view price, real time Inventory, Delivery & Lifecycle Information:

[Conec](#)

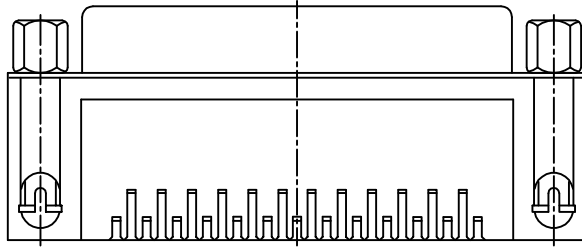
[DLS3XS6AK44X](#)

For any questions, you can email us directly:

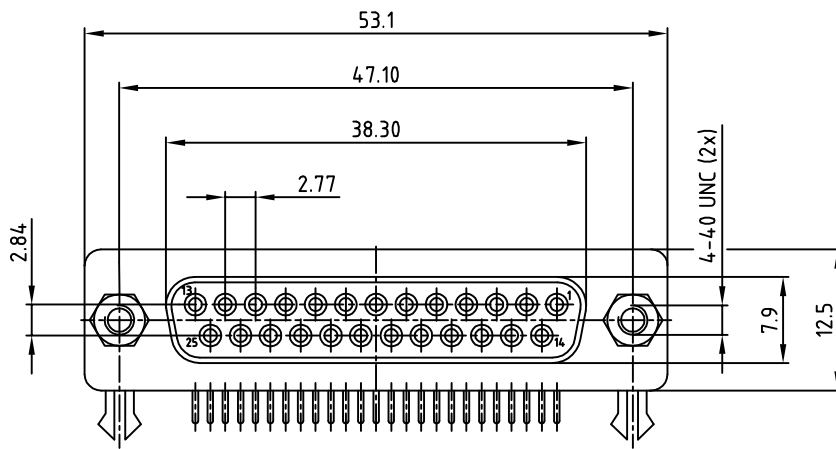
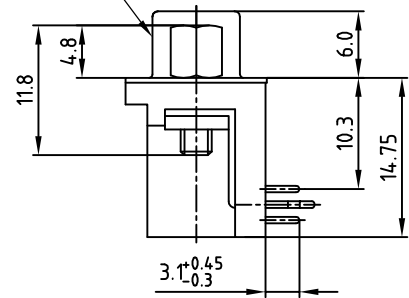
sales@integrated-circuit.com

Contact us: sales@integrated-circuit.com Website: www.integrated-circuit.com

used for: D-SUB

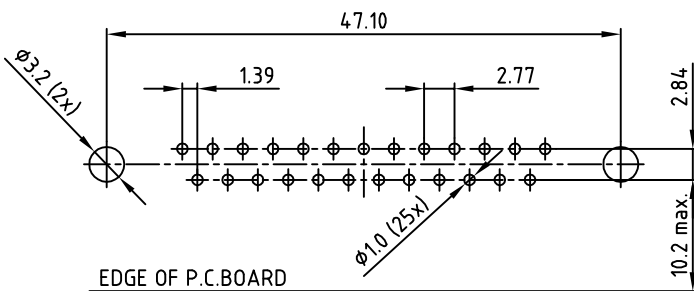


SEE NOTE 4



RECOMMENDED P.C.B. LAYOUT (TOP VIEW)

TOLERANCES: ±0.05mm



SPECIFICATION

1. MATERIAL:

- INSULATOR: THERMAL PLASTIC UL 94 V-0
- CONTACTS: COPPER ALLOY
- SHELL: STEEL
- RIVET, BOARDLOCK: COPPER ALLOY

2. CONTACT PLATING:

- UNDERPLATE: 50µin NICKEL
- CONTACT AREA: GOLD FLASH
- SOLDER TAILS AREA: GOLD FLASH

3. ELECTRICAL:

- OPERATION VOLTAGE: 250 V AC max.
- CURRENT RATING: 3 A
- CONTACT RESISTANCE: 15 mOhm
- INSULATION RESISTANCE: 3000 MOhm min. @ 500 V DC
- DIELECTRIC WITHSTANDING VOLTAGE: 1000 V AC / MINUTE
- OPERATING TEMPERATURE: -55°C TO +105°C

4. CONNECTOR IS PART MARKED: DLS3XS6AK44X CONEC ABC

THIS DRAWING MAY NOT BE COPIED OR PRODUCED IN ANY WAY, AND MAY NOT BE PASSED ON TO A THIRD PARTY WITHOUT WRITTEN PERMISSION. OWNERSHIP AND COPYRIGHT OF CONEC GMBH NOT ALTER CAD DRAWING BY HAND

Unless Otherwise Specified Tolerance		dim. in mm	
0	±0.5		
0	±0.3		
0	±0.2		
2013	date	name	
drawn	03.04.	Lehmenkühler	
appd.	03.04.	Koch	
norm			
d-old			
a	Original		

scale:	2:1
material:	SEE SPECIFICATION
title:	
D-SUB R/A 9.4mm CONNECTOR	
25pos. FEMALE	
with 4.8 x 11.8mm hex bolt	
dwg no:	
16K1A3216	
DIN-A	3
sh:	1/1