

Excellent Integrated System Limited

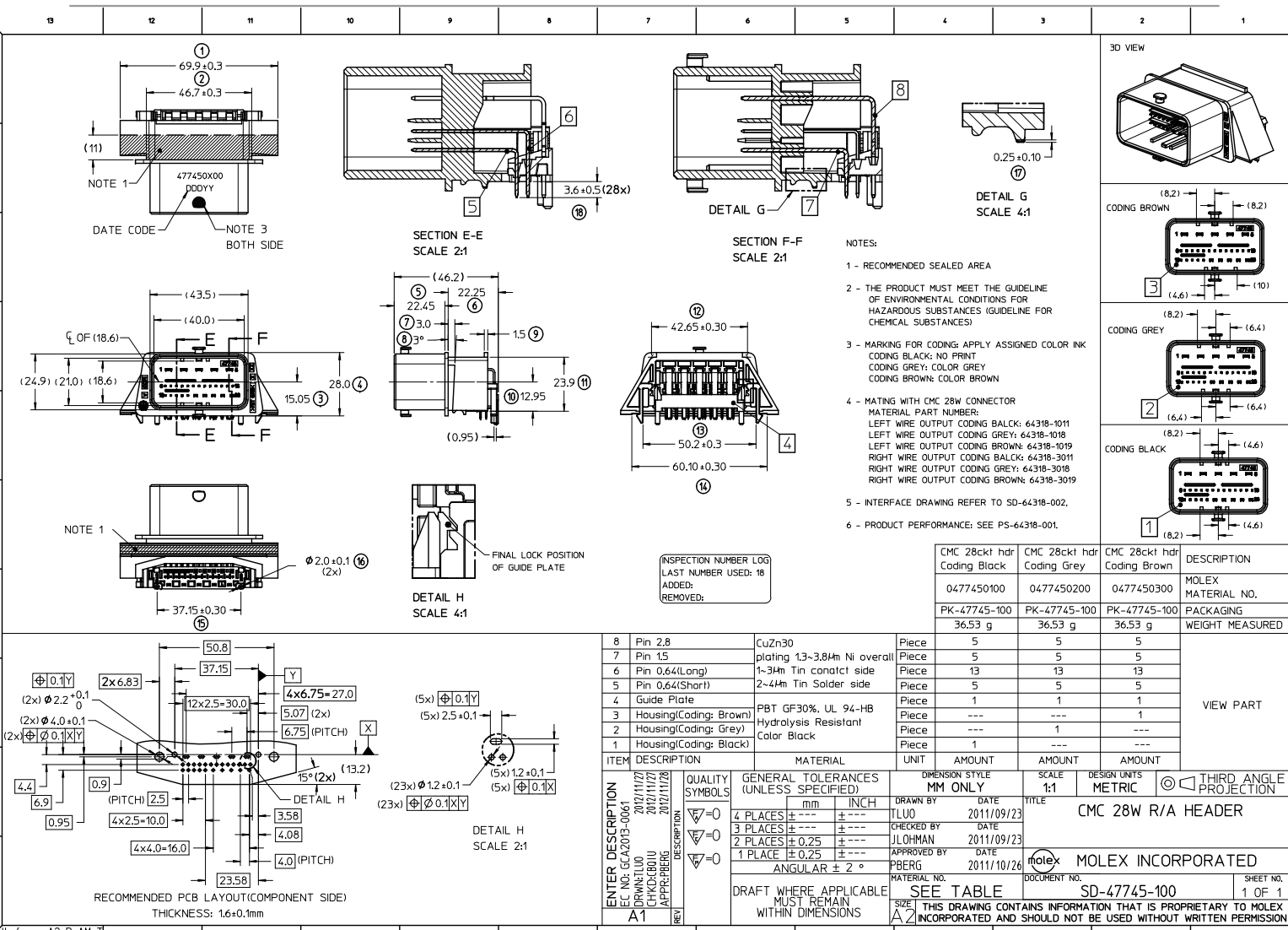
Stocking Distributor

Click to view price, real time Inventory, Delivery & Lifecycle Information:

[Molex Connector Corporation](#)
[0477450100](#)

For any questions, you can email us directly:

sales@integrated-circuit.com



- NOTES:
- 1 - RECOMMENDED SEALED AREA
 - 2 - THE PRODUCT MUST MEET THE GUIDELINE OF ENVIRONMENTAL CONDITIONS FOR HAZARDOUS SUBSTANCES (GUIDELINE FOR CHEMICAL SUBSTANCES)
 - 3 - MARKING FOR CODING: APPLY ASSIGNED COLOR INK
CODING BLACK: NO PRINT
CODING GREY: COLOR GREY
CODING BROWN: COLOR BROWN
 - 4 - MATING WITH CMC 28W CONNECTOR
MATERIAL PART NUMBER:
LEFT WIRE OUTPUT CODING BLACK: 64318-1011
LEFT WIRE OUTPUT CODING GREY: 64318-1018
LEFT WIRE OUTPUT CODING BROWN: 64318-1019
RIGHT WIRE OUTPUT CODING BLACK: 64318-3011
RIGHT WIRE OUTPUT CODING GREY: 64318-3018
RIGHT WIRE OUTPUT CODING BROWN: 64318-3019
 - 5 - INTERFACE DRAWING REFER TO SD-64318-002.
 - 6 - PRODUCT PERFORMANCE: SEE PS-64318-001.

CMC 28cct hdr Coding Black	CMC 28cct hdr Coding Grey	CMC 28cct hdr Coding Brown	DESCRIPTION
0477450100	0477450200	0477450300	MOLEX MATERIAL NO.
PK-47745-100	PK-47745-100	PK-47745-100	PACKAGING
36.53 g	36.53 g	36.53 g	WEIGHT MEASURED

ITEM	DESCRIPTION	MATERIAL	UNIT	AMOUNT	AMOUNT	AMOUNT	VIEW PART
8	Pin 2.8	CuZn30	Piece	5	5	5	
7	Pin 1.5	plating 1.3-3.84m Ni overall	Piece	5	5	5	
6	Pin 0.64(Long)	1-34m Tin conactl side	Piece	13	13	13	
5	Pin 0.64(Short)	2-44m Tin Solder side	Piece	5	5	5	
4	Guide Plate	PBT GF30%, UL 94-HB	Piece	1	1	1	
3	Housing(Coding: Brown)	Hydrolysis Resistant	Piece	---	---	1	
2	Housing(Coding: Grey)	Color Black	Piece	---	1	---	
1	Housing(Coding: Black)		Piece	1	---	---	

ENTER DESCRIPTION	QUALITY SYMBOLS	GENERAL TOLERANCES (UNLESS SPECIFIED)	DIMENSION STYLE	SCALE	DESIGN UNITS	THIRD ANGLE PROJECTION
EC NO: GCAZ013-0061 DRAWN BY: TLUO CHKD BY: CHIKC/OBU APPR: PBERG	▽=0 ▽=0 ▽=0	mm INCH 4 PLACES ± --- ± --- 3 PLACES ± --- ± --- 2 PLACES ± 0.25 ± --- 1 PLACE ± 0.25 ± --- ANGULAR ± 2 °	MM ONLY	1:1	METRIC	☉
DATE: 2012/11/27 DATE: 2012/11/27 DATE: 2012/11/28			DRAWN BY: TLUO CHECKED BY: JLHMAN APPROVED BY: PBERG	DATE: 2011/09/23 DATE: 2011/09/23 DATE: 2011/10/26	TITLE: CMC 28W R/A HEADER	
A1		DRAFT WHERE APPLICABLE MUST REMAIN WITHIN DIMENSIONS	MATERIAL NO. SEE TABLE	DOCUMENT NO. SD-47745-100		SHEET NO. 1 OF 1
			THIS DRAWING CONTAINS INFORMATION THAT IS PROPRIETARY TO MOLEX INCORPORATED AND SHOULD NOT BE USED WITHOUT WRITTEN PERMISSION			