

Excellent Integrated System Limited

Stocking Distributor

Click to view price, real time Inventory, Delivery & Lifecycle Information:

[Cinch Connectivity Solutions](#)
[25-7030](#)

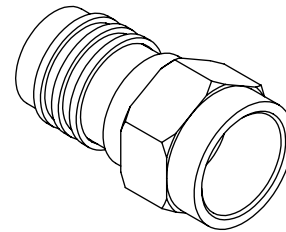
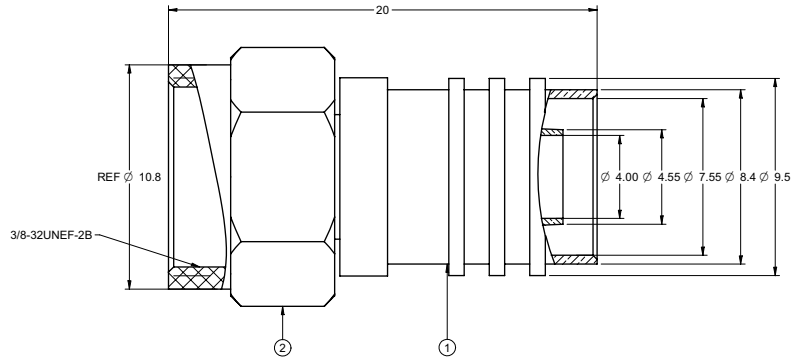
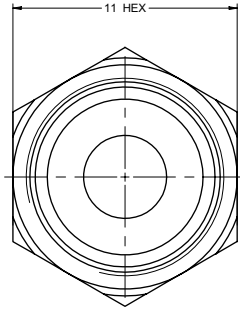
For any questions, you can email us directly:

sales@integrated-circuit.com

PART NUMBER	ITEM ① BODY	ITEM ② NUT
25-7030	BRASS NICKEL PLATED	ZINC NICKEL PLATED

受控 CONTROLLED DOCUMENT				
编号 P/N	25-7030	版本 Rev	01	日期 Rel'd Date
May8,09				

DRAWING NO.	25-7030
REVISIONS	
01	OFFICIAL RELEASE
04-13-09	01





NOTES:

1. TECHNICAL DETAIL: REFER TO EMERSON DOCUMENT P/N 25-0000

THIS DRAWING TO BE INTERPRETED
PER ANSI Y 14.5M - 1994

COMPANY CONFIDENTIAL

TOLERANCE UNLESS OTHERWISE SPECIFIED		DRAWN BY BETTY.YU		DATE 04-13-09		 EMERSON Network Power Connectivity Solutions
DECIMALS		CHECKED BY BETTY.YU		DATE 04-13-09		
X ± 0.5		APPROVED BY		DATE		
XX ± 0.2		THOMAS		04-13-09		
XXX ± 0.1						
ANGLES ± 0.5°		U/M				TITLE F-59ALM W/ ATT. 1/2 RING RG-59
THIS DRAWING WAS PRODUCED BY COMPUTER. DO NOT SCALE DRAWING OR UPDATE MANUALLY.						
SHEET 1 OF 1		DRAWING NO. 25-7030		SIZE C		