

Excellent Integrated System Limited

Stocking Distributor

Click to view price, real time Inventory, Delivery & Lifecycle Information:

[Cinch Connectivity Solutions](#)

[CPN142T](#)

For any questions, you can email us directly:

sales@integrated-circuit.com

5

4

3

2

1

D

C

B

A

D

C

B

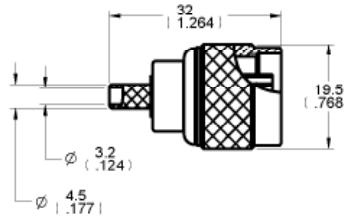
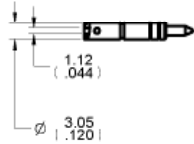
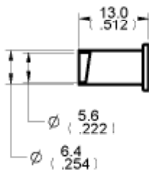
A



Description: N-male 3pc crimp RG142TFE
 Part No: CPN142T
 Application: For RG-142TFE Cable
 Crimp Tool: 24-312
 Impedance: 50 Ohms
 Frequency Range: 0-11 GHz
 Material: Crimp Sleeve Brass Nickel plated
 Contact Brass Ni/Au plated
 Body Brass Nickel plated
 Coupling Nut Brass Nickel plated
 RoHS Compliance: Yes
 Technical Detail: Refer to Emerson Document P/N 26-0000

| | |
|------------------|--|
| DRAWING NO. | |
| CPN142T-CUST | |
| REVISIONS | |
| OFFICIAL RELEASE | |
| 01 | 2009.12. 10:40:49 198709 <i>Betty</i> |
| 10-14-09 | J Y T |

| 受控 CONTROLLED DOCUMENT | | | |
|------------------------|-----------|-----------|----|
| 编号 P/N | CPN142T | 版本 Rev | 01 |
| 日期 Rel'd Date | DEC 17,09 | 日期 Rev | 01 |



DIM OUTLINE

| | | |
|---------------------------------------|-----------------------|------------------|
| TOLERANCE UNLESS OTHERWISE SPECIFIED: | DRAWN BY JEAN JIN | DATE 10-14-09 |
| DECIMALS | CHECKED BY TERRY W | DATE 10-14-09 |
| X | APPROVED BY THOMAS | DATE 10-14-09 |
| XX | | |
| X.XX | | |
| ANGLES | U/M | mm |

CUSTOMER COPY



TITLE
N-MALE 3PC CRIMP RG142TFE

THIS DRAWING WAS PRODUCED BY COMPUTER, DO NOT SCALE DRAWING OR UPDATE MANUALLY.

| | | |
|-----------------|-----------------------------|-----------|
| SHEET 1 OF 1 | DRAWING NO. CPN142T-CUST | SIZE A |
|-----------------|-----------------------------|-----------|

5

4

3

2

1