

Excellent Integrated System Limited

Stocking Distributor

Click to view price, real time Inventory, Delivery & Lifecycle Information:

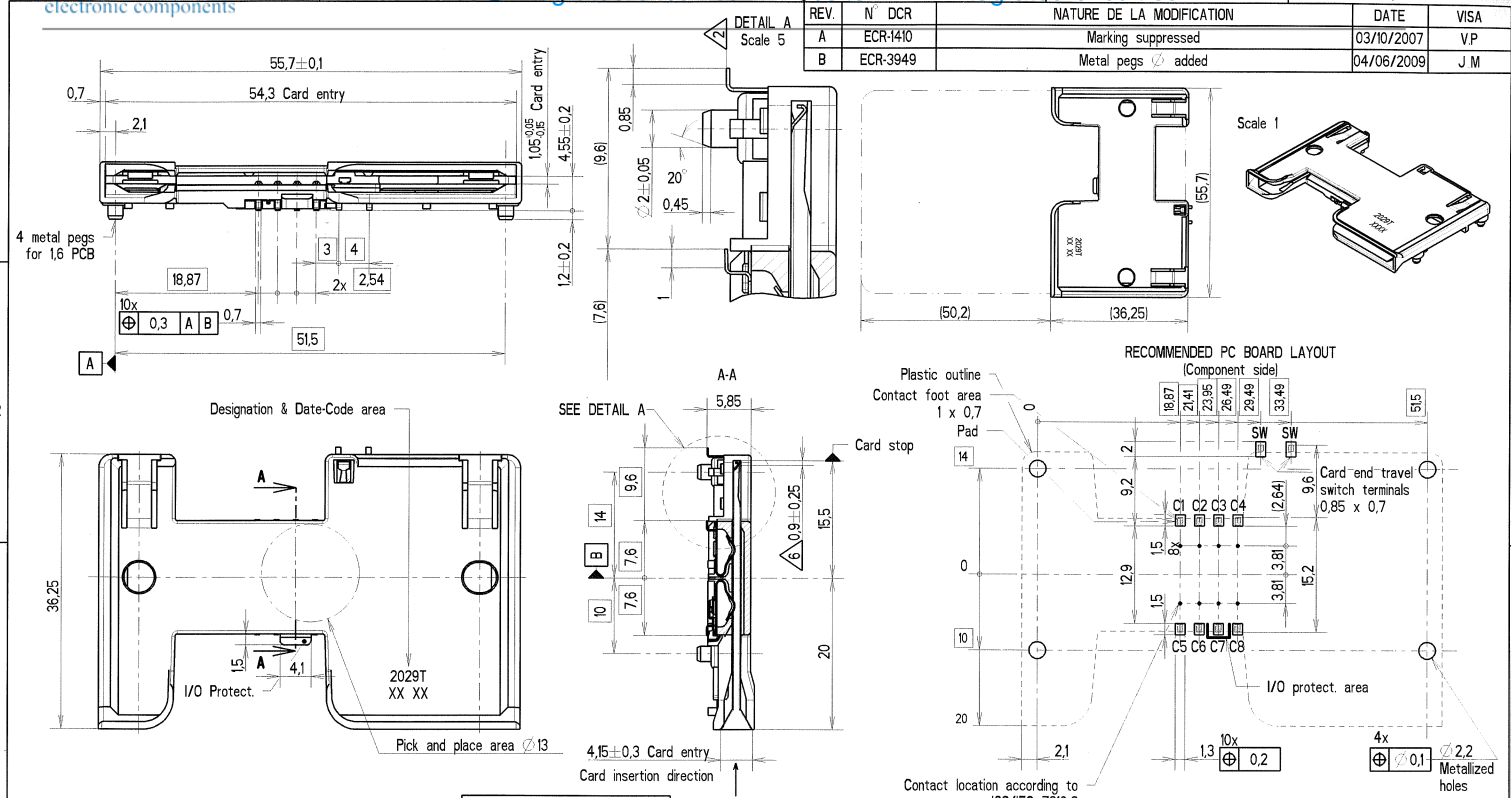
[C&K Components](#)

[CCM012029LFTT30](#)

For any questions, you can email us directly:

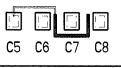
sales@integrated-circuit.com

REV.	N° DCR	NATURE DE LA MODIFICATION	DATE	VISA
A	ECR-1410	Marking suppressed	03/10/2007	VP
B	ECR-3949	Metal pegs added	04/06/2009	J M



SYSTEM CONFIDENTIAL

- Notes :
- 1 - Termination to PCB : SMT reflow soldering
Temperature/time profile according to :
C&K PS-LF-001 specification
Since there are no boardlocks , the connector must be held in place on the PCB across the top face of the cover.
 - 2 - Level of each contact tail compared to the nearest plastic stand-off.
Coplanarity of metal soldering surfaces : 0,15 mm
 - 3 - Recommendation for solder paste thickness > 0,2 mm.
 - 4 - 2,5 microns min tin plating on contact terminal areas.
0,1 microns min gold plating on switch terminal areas.
 - 5 - Contact forces :
- max 0,5 N per contact with max. card thickness.
- min 0,2 N per contact with min. card thickness.
 - 6 - Card end travel switch NO activates when the sliding card is 0,9 mm from the card stop.
 - 7 - For packaging on tray, see document :
cu 030278Y0043
 - 8 - In case of customer accessories integration requesting an interface with CCM, please ask C&K for a 3D model.
 - 9 - Electrical diagram for I/O protect :



MATIERE	TRAITEMENT	PROTECTION
SAUF INDIQUE : COTES DONNEES AVANT PROTECTION BARRIÈRES ET ARETES VIVES SUPPRIMEES	TOL. LINEAIRE ± 01 TOL. ANGULAIRE ± 2 ETAT DE SURFACE Ra	DIMENSIONS CRITIQUES DIMENSIONS SPC
DESSINE PAILLE V. DATE 08/01/2007	ANALYSE Y TAB. FAM. Y PROVE Y	LANGAGE E
VERIFIE PINON G. DATE 05/06/2003	REPLACE	
APPROUVE KUBAT L. DATE 05/06/2003		
C&K C&K Components	PROJECTION 1ER DEDRE ECHELLE 2	DESIGNATION CCM01-2029LFT 2x4 contacts SMT + switch NO 4 metal pegs + I/O protect
BP 359 - 39105 Dole - FRANCE	TAILLE FEUILLE A3 1 / 1	NUMERO CU 030288Y2029 REV B

CE PLAN EST LA PROPRIETE DE C&K COMPONENTS SAS ET NE PEUT ETRE REPRODUIT OU COMMUNIQUE SANS SON AUTORISATION