

Excellent Integrated System Limited

Stocking Distributor

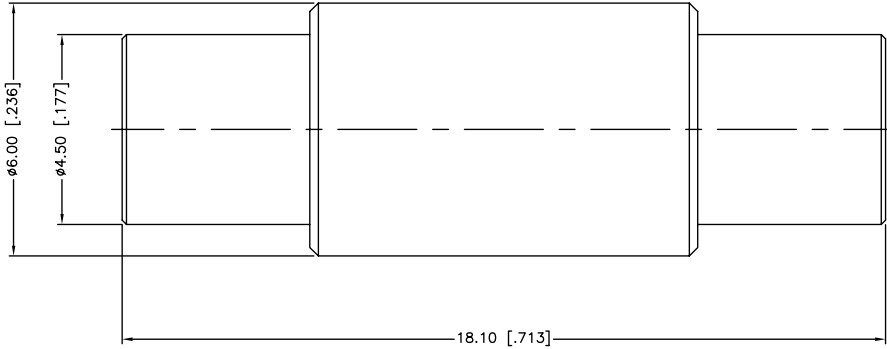
Click to view price, real time Inventory, Delivery & Lifecycle Information:

[Amphenol RF](#)
[252169-75](#)

For any questions, you can email us directly:

sales@integrated-circuit.com

REV.	DATE	ECR NO.	DESCRIPTION
NC	06/15/10	XXXXXX	INITIAL RELEASE



1. FREQUENCY RANGE: DC 0-2.5 GHz
 2. DIELECTRIC WITHSTANDING VOLTAGE: 500 VRMS, MIN.

UNLESS OTHERWISE SPECIFIED DIMENSIONS ARE IN MILLIMETERS. DIMENSIONS IN [] ARE IN INCHES AND FOR CUSTOMER REFERENCE ONLY.				APPROVALS	DATE	<h1 style="color: blue; margin: 0;">Amphenol Connex</h1>	
UNLESS OTHERWISE SPECIFIED TOLERANCES FOR MILLIMETERS ARE: 0.5 - 8mm ± 0.20mm 8 - 30mm ± 0.40mm 30 - 120mm ± 0.50mm				DRAWN M.ZHANG	06/15/10		PART DESCRIPTION MCX JACK TO JACK ADAPTOR - 75 ohm
UNLESS OTHERWISE SPECIFIED TOLERANCES FOR INCHES ARE: .020 - .315 = ± 0.007" .315 - 1.180 = ± 0.015" 1.180 - 4.724 = ± 0.020"				CHECKED			
DO NOT SCALE DRAWING				ISSUED			
				SHEET 1 OF 1			
3	CONTACT PIN	BERYLLIUM COPPER	GOLD	1	PART NO. 252169-75		
2	INSULATOR	PTFE	NATURAL	1	DWG. NO. 252169-75.DWG		
1	BODY	BRASS	GOLD	1	REV. NC	SCALE NA	
	DESCRIPTION	MATERIAL	FINISH	QTY	SIZE A		