

Excellent Integrated System Limited

Stocking Distributor

Click to view price, real time Inventory, Delivery & Lifecycle Information:

[BUD Industries, Inc.](#)
[PN-1325](#)

For any questions, you can email us directly:

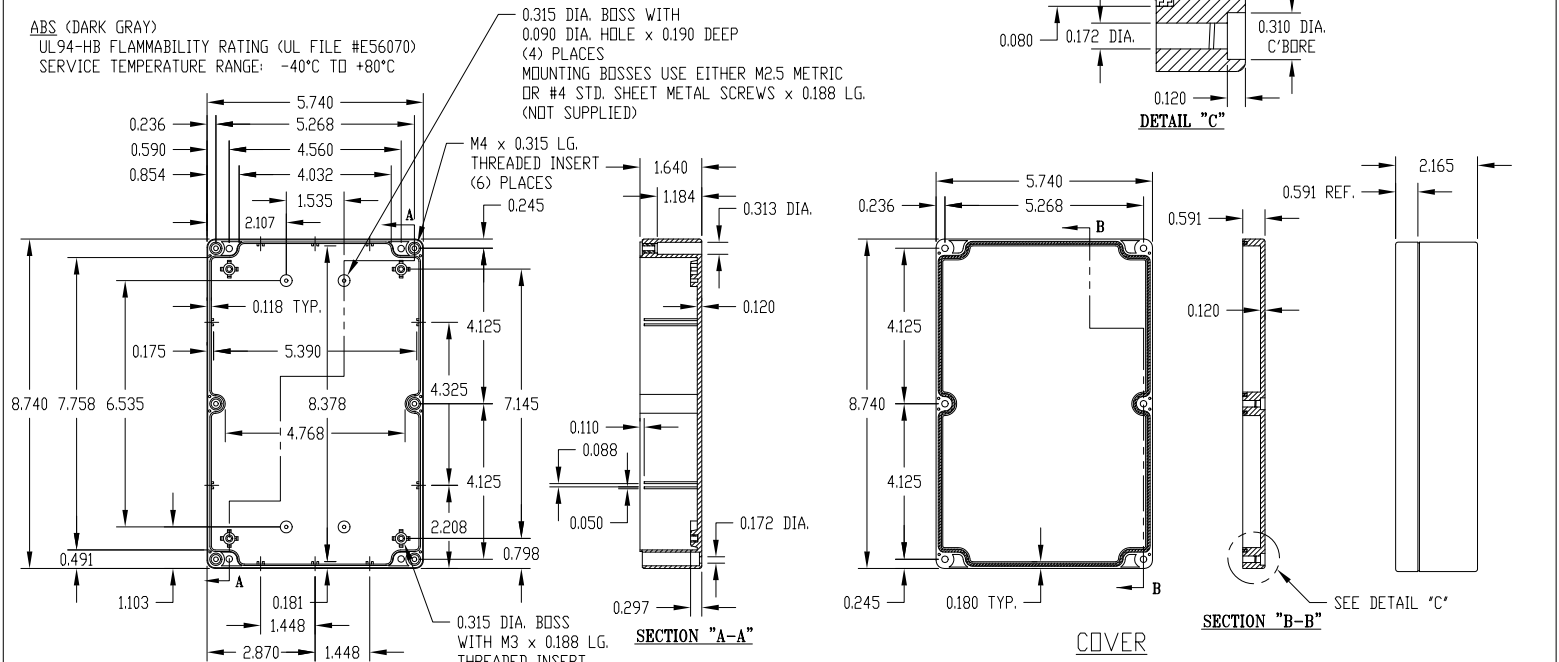
sales@integrated-circuit.com

PART NAME	NEMA 4X ENCLOSURE	PART No.	PN-1325, PN-1325-C AND PN-1325-DG	REV. DATE	11-17-08
-----------	-------------------	----------	-----------------------------------	-----------	----------

INDUSTRY STANDARDS:

POLYCARBONATE (LIGHT GRAY AND CLEAR)
 UL94-HB FLAMMABILITY RATING (UL FILE #E41613)
 UV STABILIZED
 SERVICE TEMPERATURE RANGE: -40°C TO +120°C

ABS (DARK GRAY)
 UL94-HB FLAMMABILITY RATING (UL FILE #E56070)
 SERVICE TEMPERATURE RANGE: -40°C TO +80°C



BODY

SECTION "A-A"

COVER

SECTION "B-B"

DETAIL "C"

0.315 DIA. BOSS WITH
 0.090 DIA. HOLE x 0.190 DEEP
 (4) PLACES
 MOUNTING BOSSES USE EITHER M2.5 METRIC
 OR #4 STD. SHEET METAL SCREWS x 0.188 LG.
 (NOT SUPPLIED)

M4 x 0.315 LG.
 THREADED INSERT
 (6) PLACES
 0.245

0.315 DIA. BOSS
 WITH M3 x 0.188 LG.
 THREADED INSERT
 (4) PLACES
 (SCREWS NOT SUPPLIED)

NOTE: ALL DIMENSIONS HAVE ±0.015 TOLERANCE UNLESS OTHERWISE SPECIFIED.

PART NUMBER	MATERIAL		FINISH		HARDWARE KIT
	BODY	COVER	BODY	COVER	
PN-1325	POLYCARBONATE	POLYCARBONATE	LIGHT GRAY	LIGHT GRAY	KIT CONTAINS (6) M4 x 20mm (0.787") LG. SCREWS FOR ASSEMBLY
PN-1325-C	POLYCARBONATE	POLYCARBONATE	LIGHT GRAY	CLEAR	
PN-1325-DG	HIGH-IMPACT ABS	HIGH-IMPACT ABS	DARK GRAY	DARK GRAY	