

Excellent Integrated System Limited

Stocking Distributor

Click to view price, real time Inventory, Delivery & Lifecycle Information:

[Micro Commercial Components \(MCC\)](#)
[GBJL1010-BP](#)

For any questions, you can email us directly:

sales@integrated-circuit.com



Micro Commercial Components
 20736 Marilla Street Chatsworth
 CA 91311
 Phone: (818) 701-4933
 Fax: (818) 701-4939

GBJL10005 THRU GBJL1010

10 Amp Glass Passivated Bridge Rectifier 50 to 1000 Volts

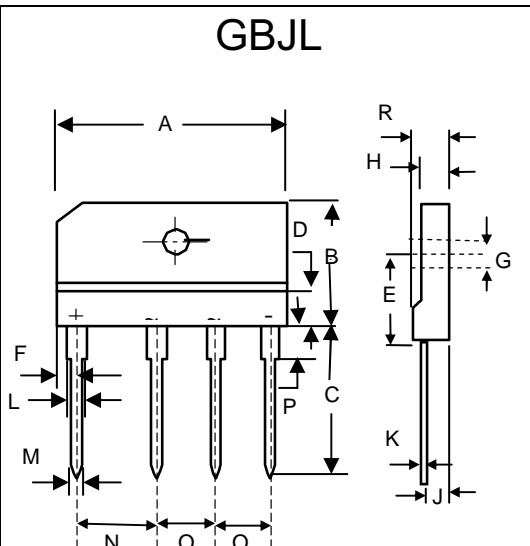
Features

- Halogen free available upon request by adding suffix "-HF"
- Epoxy meets UL 94 V-0 flammability rating
- Moisture Sensitivity Level 1
- Low forward voltage drop, high current capability.
- Ideal for printed circuit board
- Lead Free Finish/RoHS Compliant (NOTE 1) ("P" Suffix designates RoHS Compliant. See ordering information)

Maximum Ratings

- UL Recognized File # E165989
- Operating Temperature: -55°C to +150°C
- Storage Temperature: -55°C to +150°C
- Mounting Torque: 5in-lbs.

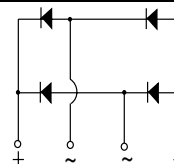
MCC Catalog Number	Device Marking	Maximum Recurrent Peak Reverse Voltage	Maximum RMS Voltage	Maximum DC Blocking Voltage
GBJL10005	GBJL10005	50V	35V	50V
GBJL1001	GBJL1001	100V	70V	100V
GBJL1002	GBJL1002	200V	140V	200V
GBJL1004	GBJL1004	400V	280V	400V
GBJL1006	GBJL1006	600V	420V	600V
GBJL1008	GBJL1008	800V	560V	800V
GBJL1010	GBJL1010	1000V	700V	1000V



Electrical Characteristics @ 25°C Unless Otherwise Specified

Average Forward Current	$I_{F(AV)}$	10 A	$T_c = 110^\circ\text{C}$
Peak Forward Surge Current	I_{FSM}	170A	8.3ms, half sine
Maximum Instantaneous Forward Voltage	V_F	1.05V	$I_{FM}=5.0\text{A}$ $T_J = 25^\circ\text{C}$
Maximum DC Reverse Current At Rated DC Blocking Voltage	I_R	10 μA 500 μA	$T_J = 25^\circ\text{C}$ $T_J = 125^\circ\text{C}$
Typical thermal resistance	$R_{\theta JA}$ $R_{\theta JC}$	22 $^\circ\text{C/W}$ 1.4 $^\circ\text{C/W}$	Units mounted on PCB without heatsink Unit case mounted on Al plate heatsink
Typical Junction Capacitance	C_J	55 pF	Measured at 1.0MHz, $V_R=4.0\text{V}$

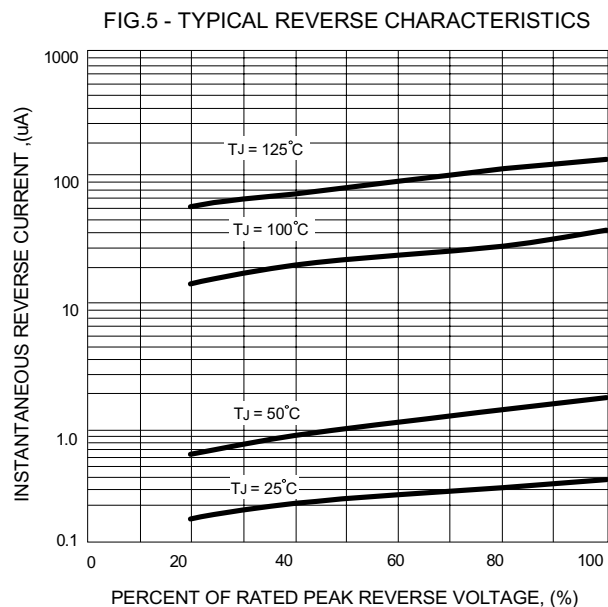
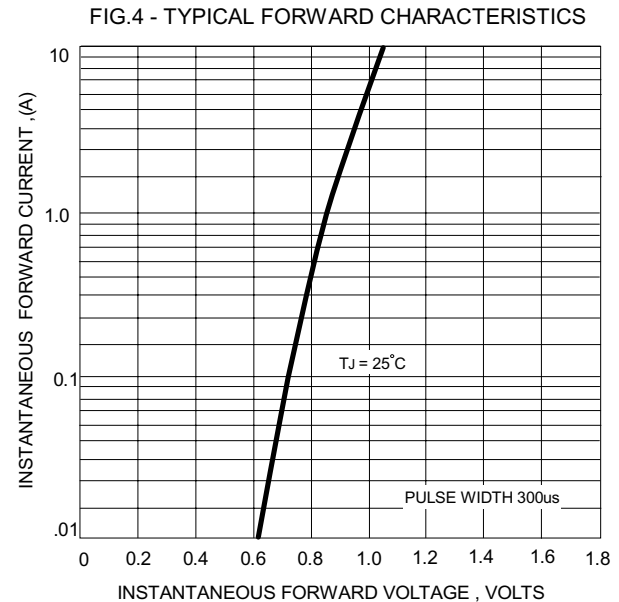
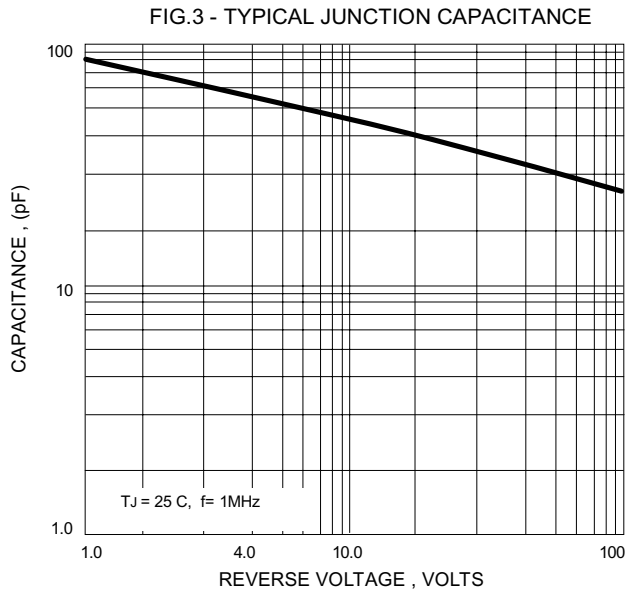
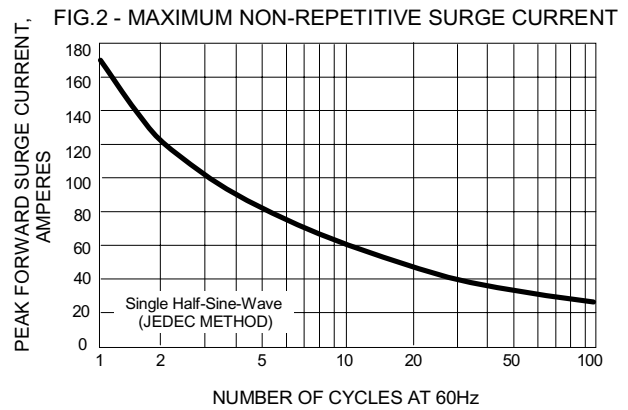
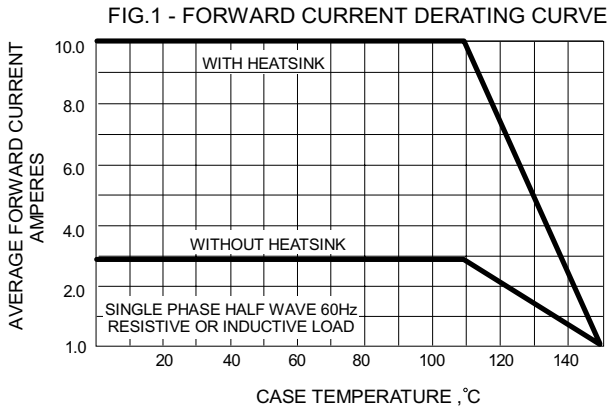
DIM	INCHES		MM		NOTE
	MIN	MAX	MIN	MAX	
A	1.067	1.091	27.10	27.70	
B	.551	.575	14.00	14.60	
C	.570	.610	14.50	15.50	
D	.071 typ		1.80 typ		
E	.339	.354	8.60	9.00	
F	.071	.087	1.80	2.20	
G	.120	.134	3.00	3.40	
H	.110	.126	2.80	3.20	
J	.098	.114	2.50	2.90	
K	.012	.028	0.30	0.70	
L	.098	.114	2.50	2.90	
M	.035	.043	0.90	1.10	
N	.390	.400	9.80	10.20	
O	.290	.300	7.30	7.70	
P	.079	.094	2.00	2.40	
R	.150	.157	3.60	4.00	



Case Type

Notes: 1. High Temperature Solder Exemption Applied, see EU Directive Annex Notes 7
 2. Pulse Test: Pulse Width 300usec, Duty Cycle 1%

**RATING AND CHARACTERISTIC CURVES
GBJL10005 thru GBJL1010**





TM

Micro Commercial Components

Ordering Information :

Device	Packing
Part Number-BP	Bulk: 2.2K/Ctn

Note : Adding "-HF" suffix for halogen free, eg. Part Number-BP-HF

IMPORTANT NOTICE

Micro Commercial Components Corp. reserves the right to make changes without further notice to any product herein to make corrections, modifications , enhancements , improvements , or other changes . **Micro Commercial Components Corp .** does not assume any liability arising out of the application or use of any product described herein; neither does it convey any license under its patent rights ,nor the rights of others . The user of products in such applications shall assume all risks of such use and will agree to hold **Micro Commercial Components Corp .** and all the companies whose products are represented on our website, harmless against all damages.

LIFE SUPPORT

MCC's products are not authorized for use as critical components in life support devices or systems without the express written approval of Micro Commercial Components Corporation.

CUSTOMER AWARENESS

Counterfeiting of semiconductor parts is a growing problem in the industry. Micro Commercial Components (MCC) is taking strong measures to protect ourselves and our customers from the proliferation of counterfeit parts. MCC strongly encourages customers to purchase MCC parts either directly from MCC or from Authorized MCC Distributors who are listed by country on our web page cited below. Products customers buy either from MCC directly or from Authorized MCC Distributors are genuine parts, have full traceability, meet MCC's quality standards for handling and storage. **MCC will not provide any warranty coverage or other assistance for parts bought from Unauthorized Sources.** MCC is committed to combat this global problem and encourage our customers to do their part in stopping this practice by buying direct or from authorized distributors.