

## Excellent Integrated System Limited

Stocking Distributor

Click to view price, real time Inventory, Delivery & Lifecycle Information:

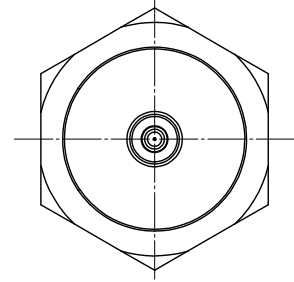
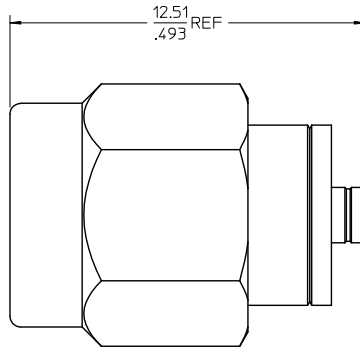
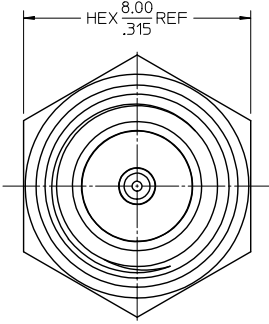
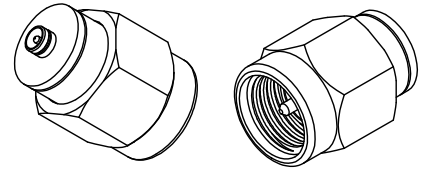
[Molex Connector Corporation](#)  
[0733860850](#)

For any questions, you can email us directly:

[sales@integrated-circuit.com](mailto:sales@integrated-circuit.com)

MATERIAL AND FINISHES

- BODY: STAINLESS STEEL  
PASSIVATED
- CONTACT: BRASS  
PLATED GOLD
- INSULATOR: TEFLON
- COUPLING NUT: BRASS  
PLATED NICKEL
- SNAP RING: BERYLLIUM COPPER
- GASKET: SILICONE RUBBER



73386-0851	73386-0850 ONE PIECE PER BAG
73386-0850	TRAY
PART NO.	PACKAGING

CHG: UPDATED TITLE & PACKAGING PER RF15-E332 EC NO: URF-2016-0227 DRAWN BY: DRWNRTEH 2015/09/24 CHKD: APPR: YCHENG 2015/09/24 B2 REV	QUALITY SYMBOLS	4 PLACES ± --- ± --- 3 PLACES ± --- ± --- 2 PLACES ± 0.10 ± --- 1 PLACE ± 0.13 ± --- 0 PLACE ± ±	GENERAL TOLERANCES (UNLESS SPECIFIED) mm INCH ± 0.10 ± 0.004 ± 0.25 ± 0.010 ± 0.50 ± 0.020 ± 1.00 ± 0.040 ± 1.50 ± 0.060 ± 2.00 ± 0.080 ± 3.00 ± 0.120 ± 4.00 ± 0.160 ± 6.00 ± 0.240 ± 8.00 ± 0.320 ± 10.00 ± 0.400	DIMENSION STYLE: MM/IN DRAWN BY: JOHN DATE: 2004/05/28 CHECKED BY: KENNY DATE: 2004/05/28 APPROVED BY: MISEN DATE: 2004/05/28	SCALE: 10:1 DESIGN UNITS: METRIC THIRD ANGLE PROJECTION	TITLE: BSA SMA PLUG TO MCRF PLUG 50 OHMS BSA-SMAP/MCRFP <b>molex</b> MATERIAL NO.: SEE TABLE DOCUMENT NO.: SD-73386-085 SHEET NO.: 1 OF 1
	ANGULAR ± 2° DRAFT WHERE APPLICABLE MUST REMAIN WITHIN DIMENSIONS		THIS DRAWING CONTAINS INFORMATION THAT IS PROPRIETARY TO MOLEX INCORPORATED AND SHOULD NOT BE USED WITHOUT WRITTEN PERMISSION			