

## **Excellent Integrated System Limited**

Stocking Distributor

Click to view price, real time Inventory, Delivery & Lifecycle Information:

[Molex Connector Corporation](#)  
[0732162121](#)

For any questions, you can email us directly:  
[sales@integrated-circuit.com](mailto:sales@integrated-circuit.com)

MATERIALS AND FINISHES

BODY, JAM NUT, CRIMP TUBE: BRASS  
PLATED NICKEL

CENTER CONTACT BERYLLIUM COPPER  
PLATED GOLD (SEE TABLE)

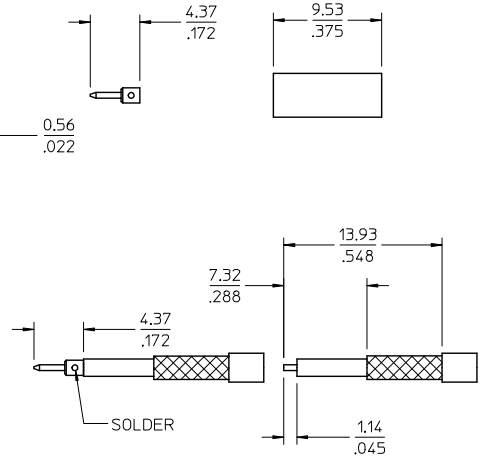
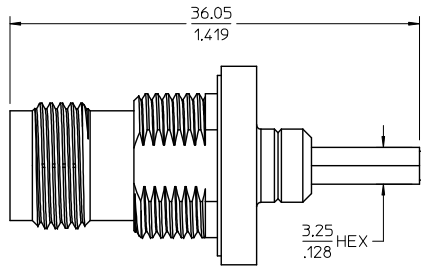
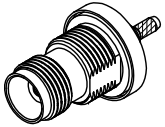
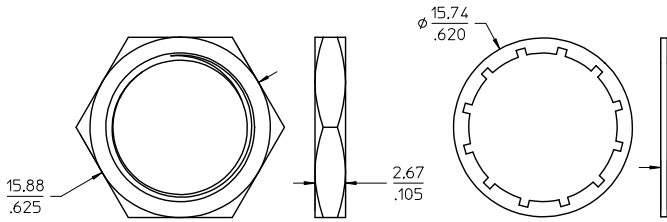
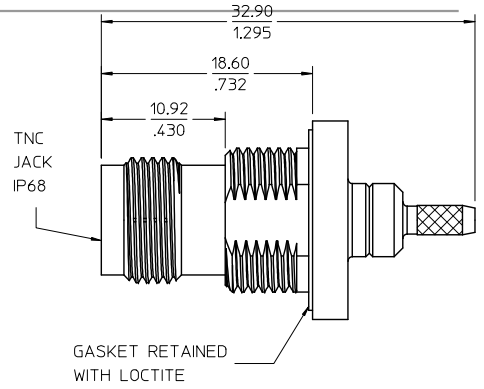
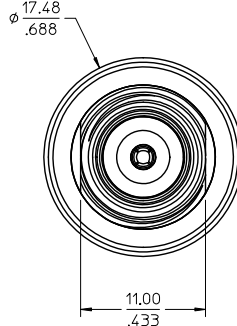
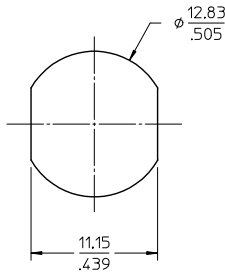
INSULATORS: TEFLON

CABLE CONTACT: BRASS  
PLATED GOLD (SEE TABLE)

LOCK WASHER: PHOSPHOR BRONZE  
PLATED NICKEL

GASKET: SILICONE RUBBER

PANEL CUT-OUT  
4.30/.169 MAX  
THICKNESS



MIL-STD-348A, FIG. 313.2	INTERFACE
SPECIFICATION	DESCRIPTION

73216-2122	BULK	10u*
73216-2121	ONE PER BAG	30u*
73216-2120	BULK	30u*
PART NO.	PACKAGING	CONTACT
		PLATING

CHG: ADD -2122  
EC NO: URF2014-0109  
DRAWN: JWIENER 2013/08/13  
CHKD: SSS 2013/08/13  
APPR: JWIENER 2013/08/14

QUALITY SYMBOLS	GENERAL TOLERANCES (UNLESS SPECIFIED)	
	mm	INCH
▽=0	4 PLACES ±	±
▽=0	3 PLACES ±	±
	2 PLACES ±	±
	1 PLACE ±	±
	ANGULAR ± 2°	
	DRAFT WHERE APPLICABLE MUST REMAIN WITHIN DIMENSIONS	

DIMENSION STYLE		SCALE	DESIGN UNITS	THIRD ANGLE PROJECTION
MM/IN			METRIC	
DRAWN BY	DATE	TITLE		
JDW	2009/02/24	TNC JACK BULKHEAD		
CHECKED BY	DATE	IP68 RG-316 50 OHM		
SSS	2009/02/24	TNC-JC, EWR-4001		
APPROVED BY	DATE	MOLEX INCORPORATED		
JWIENER	2010/04/22	MATERIAL NO. SD-73216-212		
SEE TABLE		DOCUMENT NO. SD-73216-212		
SIZE C		SHEET NO. 1 OF 1		

THIS DRAWING CONTAINS INFORMATION THAT IS PROPRIETARY TO MOLEX INCORPORATED AND SHOULD NOT BE USED WITHOUT WRITTEN PERMISSION