

Excellent Integrated System Limited

Stocking Distributor

Click to view price, real time Inventory, Delivery & Lifecycle Information:

[Molex Connector Corporation](#)
[0732760112](#)

For any questions, you can email us directly:

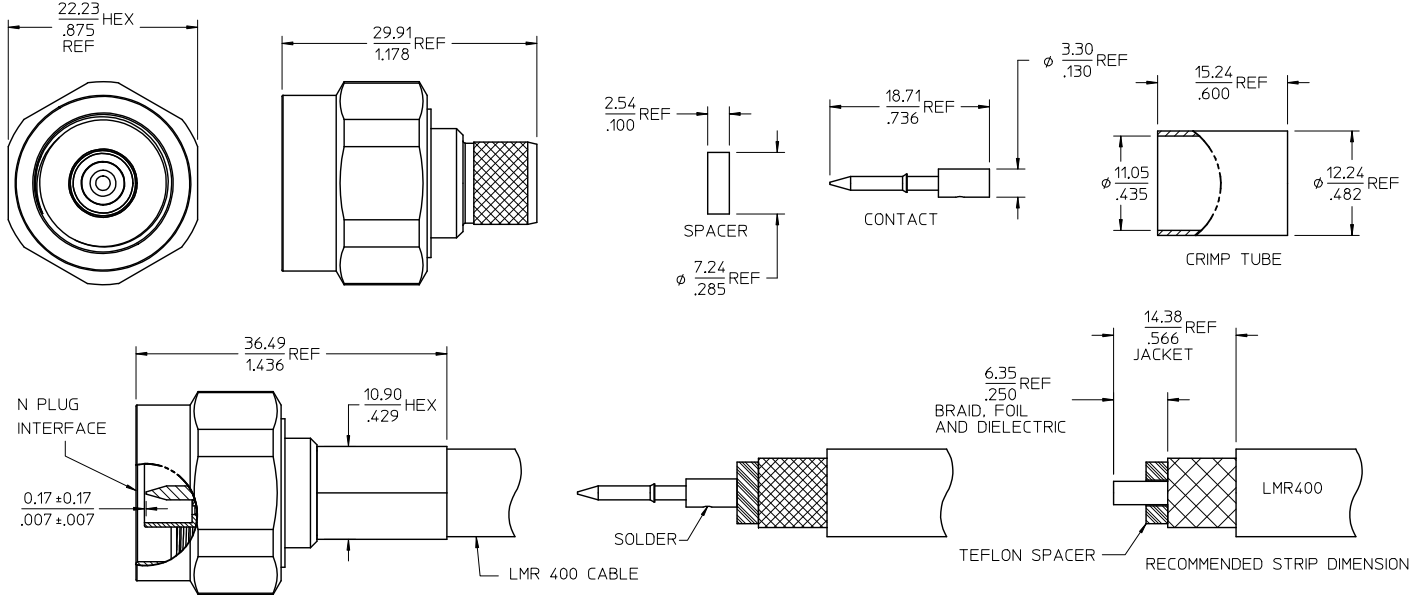
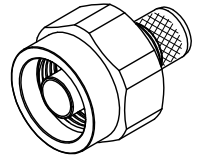
sales@integrated-circuit.com

MATERIALS AND FINISHES

BODY, COUPLING NUT, CRIMP TUBE BRASS
PLATED SEE TABLE

CENTER CONTACT BRASS
PLATED GOLD

INSULATOR, SPACER TEFLON



MIL-STD-348A, FIG. 304-1	INTERFACE
SPECIFICATION	DESCRIPTION

73276-0112	NICKEL	ONE PER BAG
73276-0111	NICKEL	STANDARD
73276-0110	SILVER	STANDARD

CHG: UPDATE VIEW OF REAR BODY EC NO: URF2013-0712 DRAWN: JWIENER 2013/06/21 CHKD: SSS 2013/06/21 APPR: JWIENER 2013/06/21	QUALITY SYMBOLS ▽=0 ▽=0	GENERAL TOLERANCES (UNLESS SPECIFIED)	DIMENSION STYLE		SCALE	DESIGN UNITS	THIRD ANGLE PROJECTION
			mm	INCH			
		4 PLACES ± --- ± ---		DRAWN BY	DATE	TITLE	
		3 PLACES ± --- ± ---		EDC	1998/05/06	N PLUG, STR, CRIMP	
		2 PLACES ± --- ± ---		CHECKED BY	DATE	STYLE LMR-400	
		1 PLACE ± --- ± ---		NBJ	1998/05/14	N-PC EWR-3211	
		ANGULAR ± 2 °		APPROVED BY	DATE	MOLEX INCORPORATED	
				JWIENER	2010/05/03	MATERIAL NO. DOCUMENT NO. SHEET NO.	
						SD-73276-011 1 OF 1	
		DRAFT WHERE APPLICABLE MUST REMAIN WITHIN DIMENSIONS		SEE TABLE		THIS DRAWING CONTAINS INFORMATION THAT IS PROPRIETARY TO MOLEX INCORPORATED AND SHOULD NOT BE USED WITHOUT WRITTEN PERMISSION	