

Excellent Integrated System Limited

Stocking Distributor

Click to view price, real time Inventory, Delivery & Lifecycle Information:

[Molex Connector Corporation](#)
[0732540431](#)

For any questions, you can email us directly:

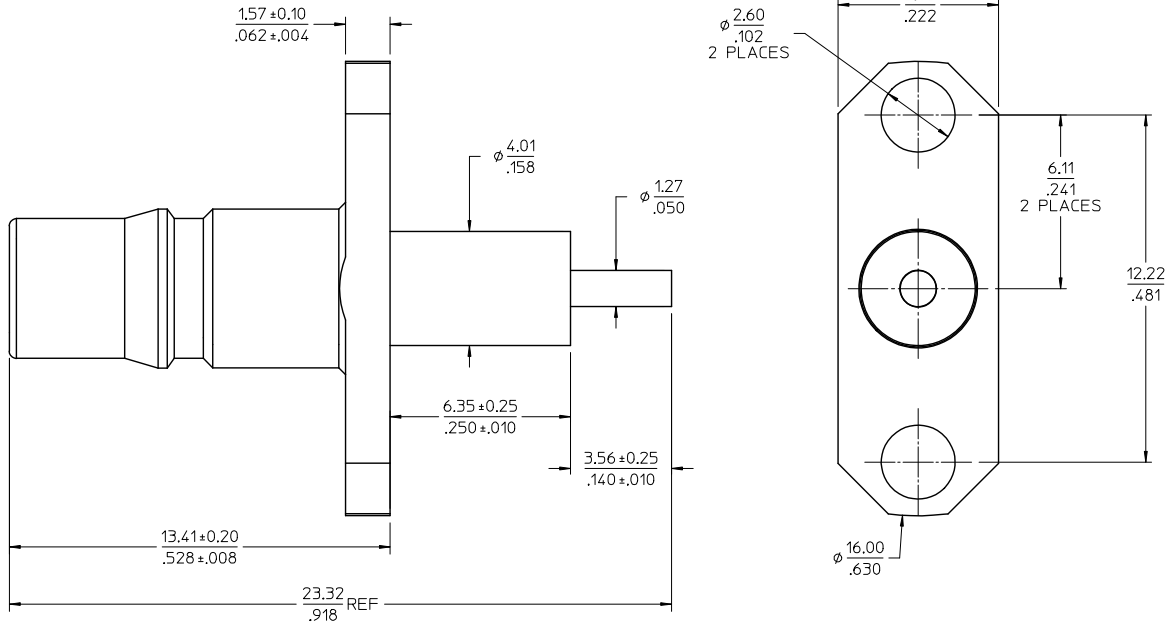
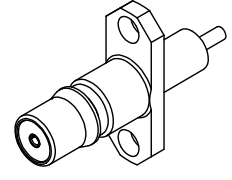
sales@integrated-circuit.com

MATERIALS AND FINISHES

BODY BRASS
PLATED GOLD OVER NICKEL PHOSPHOR

CENTER CONTACT BERYLLIUM COPPER
PLATED GOLD OVER NICKEL

INSULATOR TEFLON



73254-0431	ONE PER BAG
73254-0430	TRAY
PART NO.	PACKAGING

PS-89675-1330	QMA
SPECIFICATION	DESCRIPTION

CHG:	UPDATE PACKAGING FOR 73254-0430 PER RF15-E219
EC NO.:	URF2015-0667
DRWWR:	2015/05/27
CHKD:	
APPR:	CHENG
REV	DESCRIPTION
A3	

QUALITY SYMBOLS	GENERAL TOLERANCES (UNLESS SPECIFIED)	
	mm	INCH
▽=0	4 PLACES ± ---	± ---
▽=0	3 PLACES ± ---	± ---
▽=0	2 PLACES ± ---	± ---
▽=0	1 PLACE ± ---	± ---
▽=0	0 PLACE ± ---	± ---
	ANGULAR ± 2°	
	DRAFT WHERE APPLICABLE MUST REMAIN WITHIN DIMENSIONS	

DIMENSION STYLE	
MM/IN	
DRAWN BY	DATE
JDW	2009/11/18
CHECKED BY	DATE
SSS	2009/11/18
APPROVED BY	DATE
JDW	2009/11/18

SCALE	DESIGN UNITS	THIRD ANGLE PROJECTION
10:1	METRIC	
TITLE		
QMA JACK, STRAIGHT 2 HOLE FLANGE RECEPTACLE EWR-24255, QMA-JR		
molex		
MATERIAL NO.	DOCUMENT NO.	SHEET NO.
SEE TABLE	SD-73254-043	1 OF 1
THIS DRAWING CONTAINS INFORMATION THAT IS PROPRIETARY TO MOLEX INCORPORATED AND SHOULD NOT BE USED WITHOUT WRITTEN PERMISSION		