

Excellent Integrated System Limited

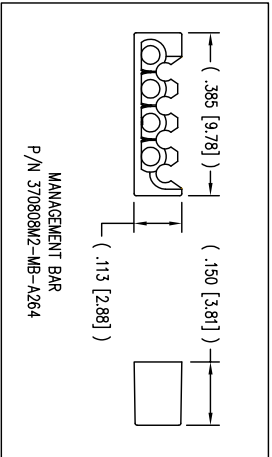
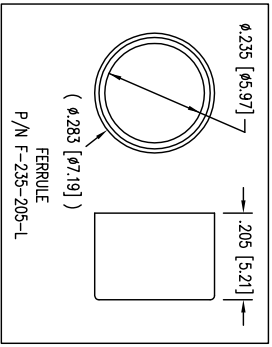
Stocking Distributor

Click to view price, real time Inventory, Delivery & Lifecycle Information:

[Bel Fuse Inc.](#)
[943-SP-370808SM2-A264](#)

For any questions, you can email us directly:
sales@integrated-circuit.com

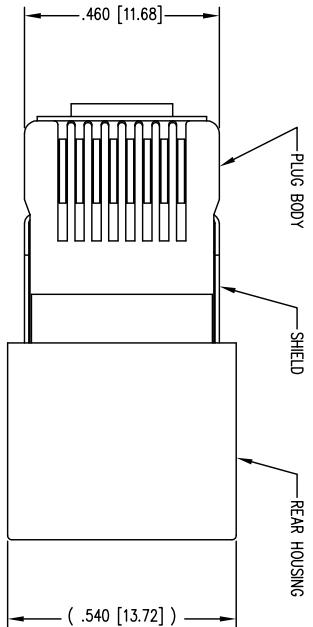
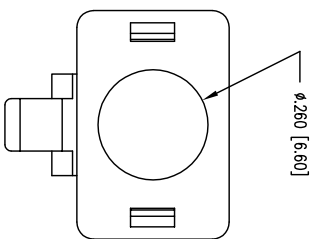
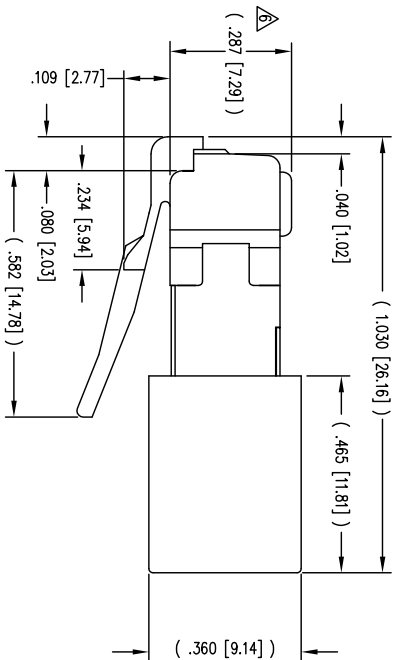
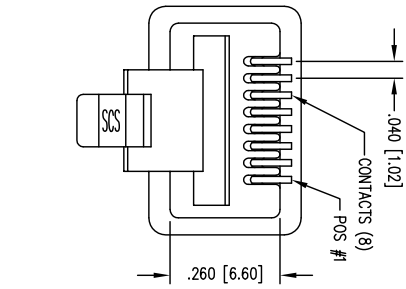
REV. 7/3/03



THIRD ANGLE PROJECTION	
DO NOT SCALE DRAWING	
DRAWING IS SUBJECT TO CHANGE WITHOUT NOTICE	
DIMENSIONS: INCHES [METRIC]	
UNLESS OTHERWISE SPECIFIED TOLERANCES ARE ± 0.05 [0.13] ANGLES ARE $\pm 1^\circ$	
SHEET NO. 1 OF 1	

Bel Stewart Comm
 11118 Susquehanna Trail South
 Glen Rock, PA 17327-9199
 (717) 235-7512 Fax: (717) 235-7954 http://www.belstewart.com
 TITLE: 8 POSITION/8 CONDUCTOR STANDARD SHIELDED PLUG KIT
 THIS DRAWING AND THE SUBJECT MATTER SHOWN THEREON ARE CONFIDENTIAL AND THE PROPRIETARY PROPERTY OF BEL STEWART CONNECTOR AND SHALL NOT BE REPRODUCED, COPIED, OR USED IN ANY MANNER WITHOUT PRIOR WRITTEN CONSENT OF BEL STEWART CONNECTOR. THIS PRODUCT MAY BE PROTECTED BY ONE OR MORE OF THE FOLLOWING US PATENTS: 5628647, 6402559, 6409535, 6524128, 6752571, 8032883. OTHER PATENTS MAY BE PENDING.

BAG OF 50	50 MICRO-INCHES [1.27um]	SS-370
BULK	50 MICRO-INCHES [1.27um]	943-SP-370
PACKAGE	CONTACT PLATING IN MATING AREA	PART N



(SHOWN ASSEMBLED)

- NOTES:
- 1- PLUG KIT CONSISTS OF :
 PRE-INSERTED PLUG HOUSING & SHIELD MANAGEMENT BAR
 FERRULE
 - 2- MATERIALS :
 FRONT HOUSING PLASTIC : CLEAR POLYCYCLOMANA
 MANAGEMENT BAR : CLEAR POLYCARBONAN
 SHIELD : TIN PLATED BRASS
 CONTACTS : PHOSPHOR BRONZE, SELECTIV
 FERRULE : NICKEL OR TIN PLATED BRASS
 - 3- CONTACTS TERMINATE STRANDED & SOLID 0 TO 0.042 [1.07] OUTSIDE DIAMETER OF INSUL
 - 4- FOR PRODUCT SPECIFICATION SEE PRO26-0
 - 5- DIMENSIONS AND TOLERANCES COMPLY WITH
 - 6- TERMINATED PLUG HEIGHT: .237 [6.02] ± 0.005
 - 7- DESIGNED FOR CATEGORY 5/6e APPLICATION

DATE	REV
2-06-09	B
6-25-09	B
2-14-11	B
5-23-12	B