

Excellent Integrated System Limited

Stocking Distributor

Click to view price, real time Inventory, Delivery & Lifecycle Information:

[TE Connectivity AMP Connectors](#)
[606716-1](#)

For any questions, you can email us directly:

sales@integrated-circuit.com

4

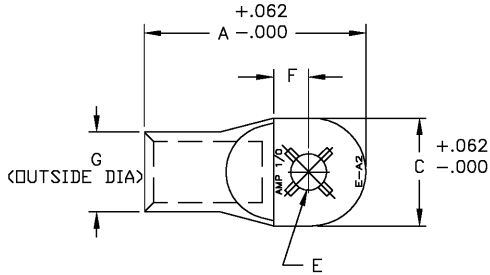
3

2

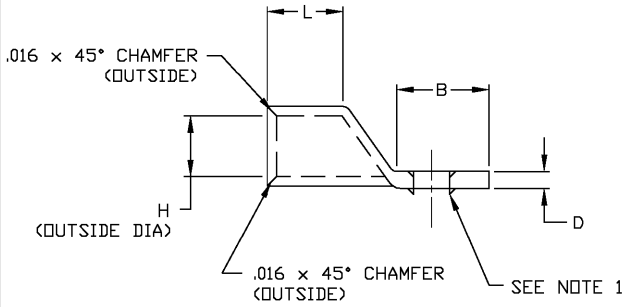
1

THIS DRAWING IS UNPUBLISHED. RELEASED FOR PUBLICATION .19
 © COPYRIGHT 19 BY AMP INCORPORATED. ALL RIGHTS RESERVED.

LOC	DIST	REVISIONS			
P	LTR	DESCRIPTION	DATE	DWN	APVD
AA	27	B	REDWN & REV; 0G1Z-0042-99	12MAY00	LMHLHS



1. LOCKING LANCE FOR P/N -2 AND -7 ONLY.



.250	.750	.469	.609	.438	#.266	.141	.86	.938	2.125	606716-7
.250	.750	.469	.609	.438	#.266	.141	.86	.938	2.125	606716-6
.375	.750	.469	.609	.438	#.391	.141	.86	.938	2.125	606716-5
.500	.750	.469	.609	.500	#.516	.141	.86	.938	2.125	606716-4
.438	.750	.469	.609	.438	#.453	.141	.86	.938	2.125	606716-3
.375	.750	.469	.609	.438	#.391	.141	.86	.938	2.125	606716-2
.312	.750	.469	.609	.438	#.328	.141	.86	.938	2.125	606716-1
BOLT HOLE SIZE	L	H	G	F	E	D	C	B	A	PART NUMBER

THIS DRAWING IS A CONTROLLED DOCUMENT.		DWN L. HALL 18APR00	AMP Incorporated Harrisburg PA 17105-3608	
DIMENSIONS: INCHES		CHK L.H. SMITH 12MAY00		
TOLERANCES UNLESS OTHERWISE SPECIFIED:		APVD S. ANTHONY 12MAY00	NAME	
0 PLC ± 1 PLC ± 2 PLC ±.02 3 PLC ±.005 4 PLC ±.0005 ANGLES ±.3°		PRODUCT SPEC	AMP TUBULAR TERMINAL 1/0 (ROUND TONGUE)	
MATERIAL: HIGH CONDUCTIVITY WROUGHT COPPER		APPLICATION SPEC	SIZE	RESTRICTED TO
FINISH: ELECTRO TIN PLATE		WEIGHT: -	A3 00779 C=606716	
		CUSTOMER DRAWING	SCALE: NTS	SHEET 1 OF 1 REV B