

Excellent Integrated System Limited

Stocking Distributor

Click to view price, real time Inventory, Delivery & Lifecycle Information:

[Anaren](#)
[10615-10](#)

For any questions, you can email us directly:
sales@integrated-circuit.com

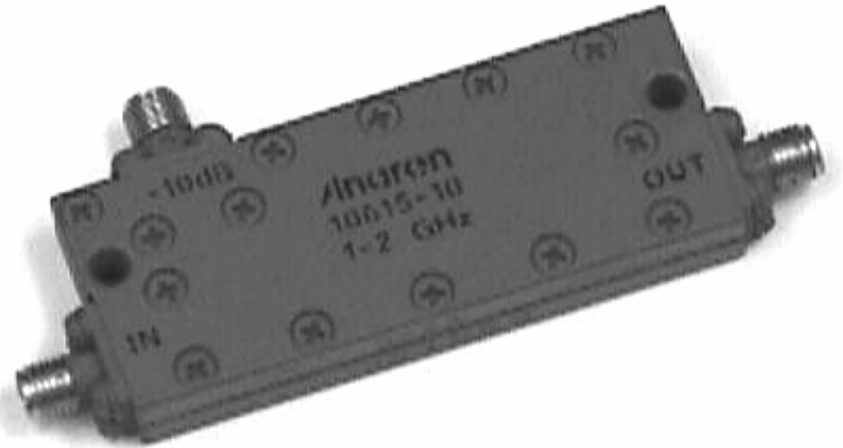
Directional Couplers
In-Line Style

Applications

- Subassemblies
- Lab Systems
- Leveling Loops
- Power Monitoring
- Test and Calibration

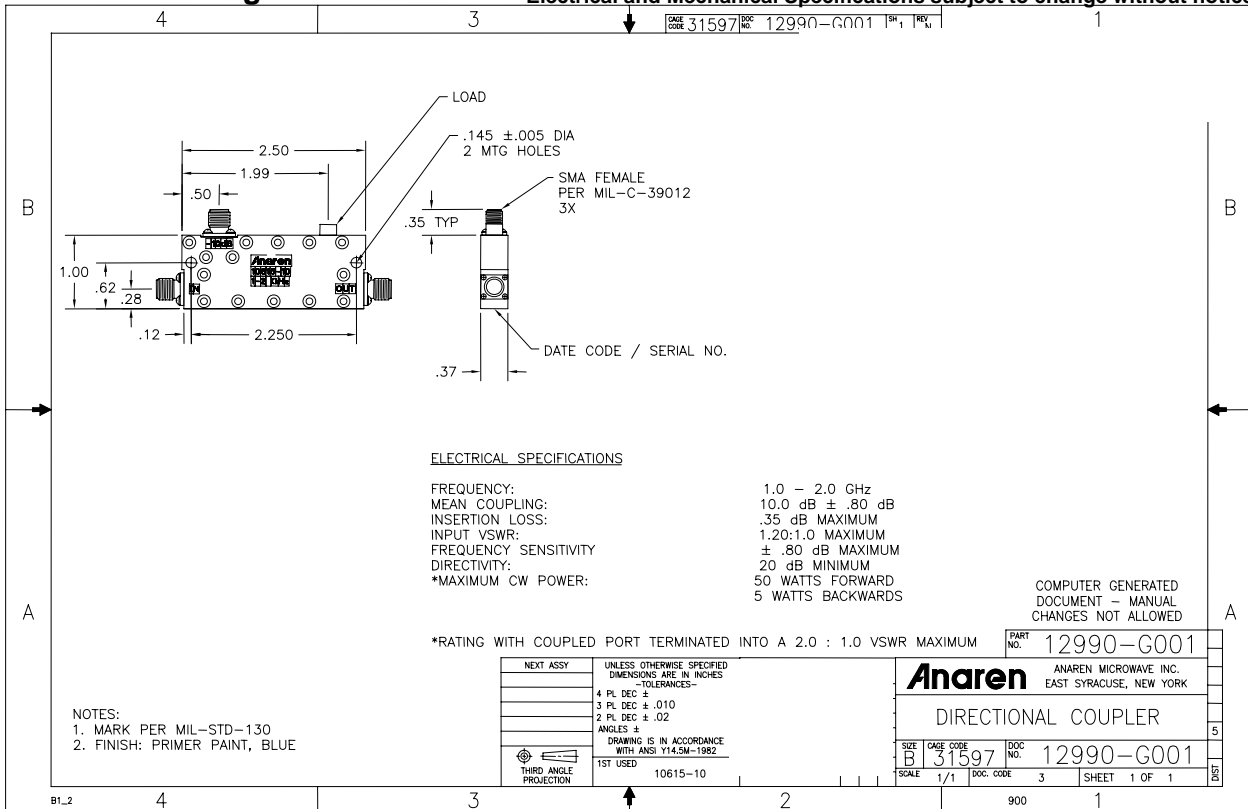
Features

- Military Grade
- 1.0 – 2.0 GHz
- In-Line Configuration
- Connectors Per MIL-C-39012
- Rugged Aluminum Housing
- Built in Termination
- Meets MIL-E-5400 Class 3 Requirements



NOTES: The power rating applies when coupled port VSWR is 2.0:1 or less.
 Higher power can be handled with a lower VSWR termination
Electrical and Mechanical Specifications subject to change without notice

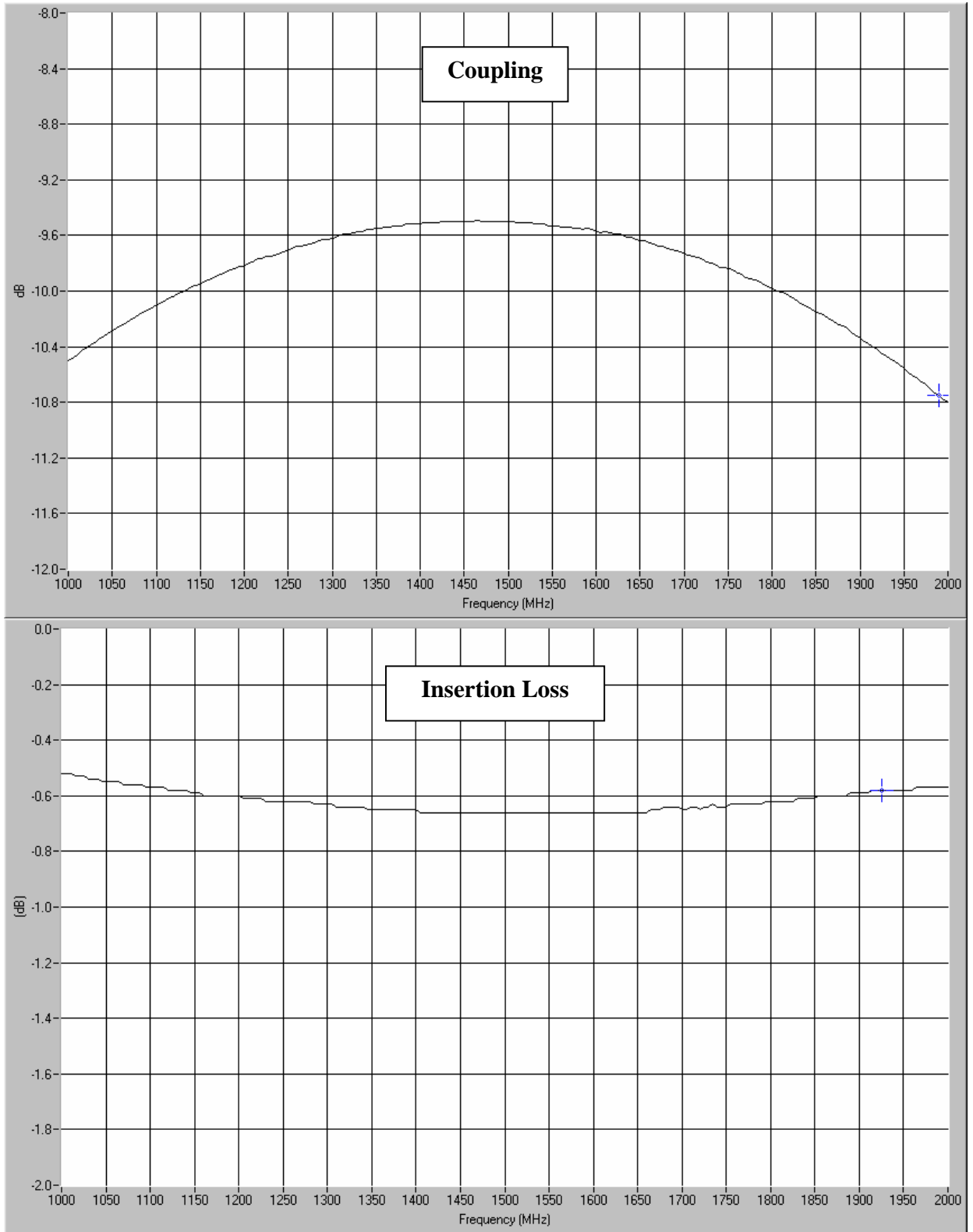
Outline Drawing



Model 10615-10

Aluminum Cased Connectorized Components

Typical Test Data Plots



USA/Canada: (315) 432-8909
 Toll Free: (800) 411-6596
 Europe: +44 2392-232392

Typical Test Data Plots

