

## **Excellent Integrated System Limited**

Stocking Distributor

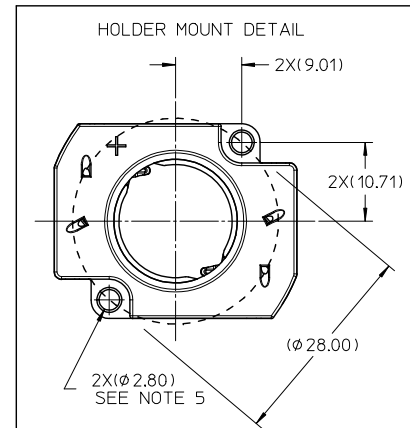
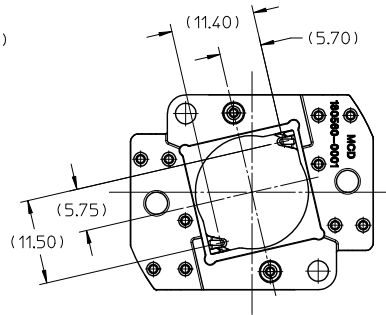
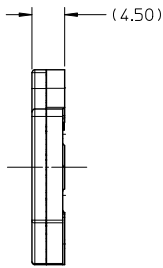
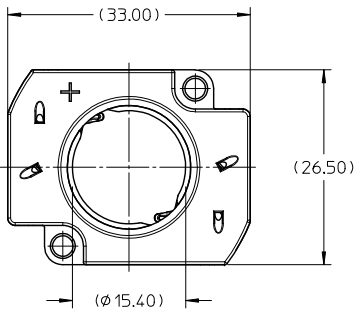
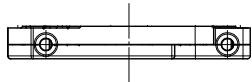
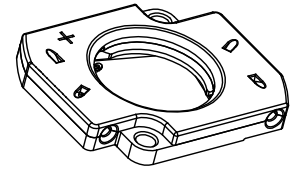
Click to view price, real time Inventory, Delivery & Lifecycle Information:

[Molex Connector Corporation](#)  
[1805600001](#)

For any questions, you can email us directly:

[sales@integrated-circuit.com](mailto:sales@integrated-circuit.com)

10	9	8	7	6	5	4	3	2	1
PART NUMBER	DESCRIPTION			MATERIAL		COLOR			
180560-0001	CXA15 LED HOLDER - PBT			POLYESTER, GLASS FILLED		WHITE			
180560-0101	CXA15 LED HOLDER - NYLON			POLYAMIDE, GLASS FILLED		NATURAL			
180560-0002	CXA15 LED HOLDER w/PRE-HOLD - PBT			POLYESTER, GLASS FILLED		WHITE			
180560-0102	CXA15 LED HOLDER w/PRE-HOLD - NYLON			POLYAMIDE, GLASS FILLED		NATURAL			



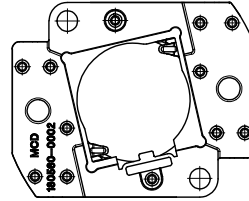
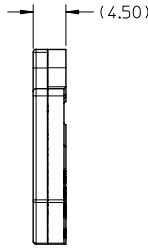
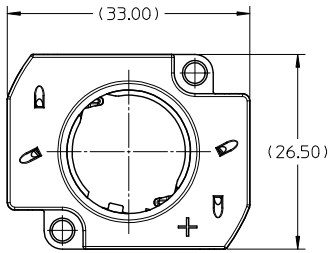
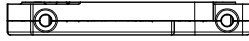
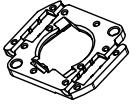
NOTES:

- 1) MATERIALS: SEE CHART.
- 2) WIRE TRAP TERMINALS: COPPER ALLOY.
  - a. FINISH: SELECTIVE GOLD OVER NICKEL.
- 3) THIS PRODUCT IS ELV AND ROHS COMPLIANT.
- 4) APPLICABLE WIRE GAUGE - 18 OR 22 AWG
  - a. SOLID WIRE IS RECOMMENDED.
  - b. IF STRANDED WIRE IS USED, PRE-TINNED IS RECOMMENDED.
  - c. 11.0mm±1.0mm STRIP LENGTH IS RECOMMENDED.
- 5) MOUNT HOLDER USING M2.5 SCREWS (2); 0.40 MIN - 0.80 MAX NEWTON METERS TORQUE.
- 6) ALL DIMENSIONS IN PARENTHESES "X.XX" ARE FOR REFERENCE ONLY.
- 7) UL:OLFB2 UL496 FILE: E345583.

180560-0001

180560-0101

ENTER DESCRIPTION E.C. NO: SSI.2016-0054 DRAWN: ZABJANDSKI.2016/03/29 CHKD: APPREGMEYER APPROX: 2016/04/11 REV: A1	QUALITY SYMBOLS	GENERAL TOLERANCES (UNLESS SPECIFIED)	DIMENSION STYLE	SCALE	DESIGN UNITS	THIRD ANGLE PROJECTION																		
	$\nabla=0$ $\nabla=0$ $\nabla=0$	<table border="1"> <thead> <tr> <th></th> <th>mm</th> <th>INCH</th> </tr> </thead> <tbody> <tr> <td>4 PLACES</td> <td>± .10</td> <td>± .004</td> </tr> <tr> <td>3 PLACES</td> <td>± .15</td> <td>± .006</td> </tr> <tr> <td>2 PLACES</td> <td>± 0.13</td> <td>± .005</td> </tr> <tr> <td>1 PLACE</td> <td>± 0.25</td> <td>± .010</td> </tr> <tr> <td>0 PLACE</td> <td>± .30</td> <td>± .012</td> </tr> </tbody> </table>		mm	INCH	4 PLACES	± .10	± .004	3 PLACES	± .15	± .006	2 PLACES	± 0.13	± .005	1 PLACE	± 0.25	± .010	0 PLACE	± .30	± .012	MM ONLY	2:1	METRIC	THIRD ANGLE PROJECTION
		mm	INCH																					
	4 PLACES	± .10	± .004																					
3 PLACES	± .15	± .006																						
2 PLACES	± 0.13	± .005																						
1 PLACE	± 0.25	± .010																						
0 PLACE	± .30	± .012																						
DRAWN BY: FJAKL I C CHECKED BY: MCOLE APPROVED BY: DMC GOWAN DATE: 2012/08/10 DATE: 2013/10/31 DATE: 2012/08/17	MATERIAL NO. SEE CHART	TITLE CXA15 HOLDER ASSEMBLY	DOCUMENT NO. SD-180560-001	SHEET NO. 1 OF 2																				
ANGLE ±1/2° DRAFT WHERE APPLICABLE MUST REMAIN WITHIN DIMENSIONS THIS DRAWING CONTAINS INFORMATION THAT IS PROPRIETARY TO MOLEX INCORPORATED AND SHOULD NOT BE USED WITHOUT WRITTEN PERMISSION																								



180560-0002

180560-0102

<b>ENTER DESCRIPTION</b> E.C. NO: SSI.2016-0054 DRAWN: ZABJANDYSKI.2016/03/29 CHKD: APPREGMEYER 2016/04/11	<b>QUALITY SYMBOLS</b> √=0 √=0 √=0	<b>GENERAL TOLERANCES (UNLESS SPECIFIED)</b>		<b>DIMENSION STYLE</b> MM ONLY		SCALE 2:1	DESIGN UNITS METRIC	THIRD ANGLE PROJECTION	
		4 PLACES ± --- ± --- 3 PLACES ± --- ± --- 2 PLACES ± 0.13 ± --- 1 PLACE ± 0.25 ± --- 0 PLACE ± --- ± ---	mm INCH	DRAWN BY FJAKL I C	DATE 2012/08/10	TITLE CXA15 HOLDER ASSEMBLY		DOCUMENT NO. SD-180560-001	
A1	REV	ANGULAR ± 1/2° DRAFT WHERE APPLICABLE MUST REMAIN WITHIN DIMENSIONS		MATERIAL NO. SEE CHART		THIS DRAWING CONTAINS INFORMATION THAT IS PROPRIETARY TO MOLEX INCORPORATED AND SHOULD NOT BE USED WITHOUT WRITTEN PERMISSION			