



## Excellent Integrated System Limited

Stocking Distributor

Click to view price, real time Inventory, Delivery & Lifecycle Information:

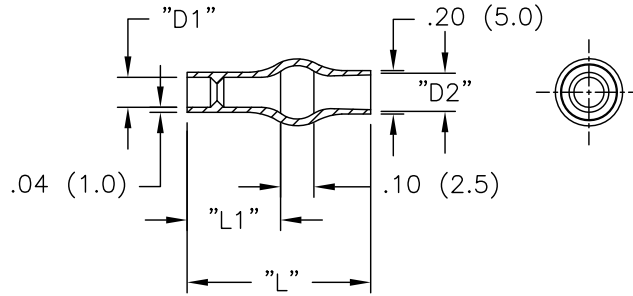
[Essentra Components \(formerly Richco, Inc.\)  
224225](#)

For any questions, you can email us directly:

[sales@integrated-circuit.com](mailto:sales@integrated-circuit.com)

PART #	WIRE O.D. RANGE	WIRE Ga.	"D1"	"D2"	"L1" ±.04 (±1.0)	"L" ±.04 (±1.0)
224225	.058-.091	22-18	.10 (2.5)	.16 (4.0)	.24 (6.0)	.51 (13.0)
224230	.068-.113	20-18	.12 (3.0)	.16 (4.0)	.24 (6.0)	.51 (13.0)

AVAILABLE BY SPECIAL ORDER ONLY



NOTES:

1. MATERIAL: SOFT PVC (RMS-55).
2. COLOR: TRANSPARENT BLUE.

REV		DESCRIPTION	ENGR	DATE	TOLERANCES UNLESS NOTED .XX=±.010 .XXX=±.005 FRAC=±1/64 ANG=±1°	FILE # 2242XX MAT'L: SEE NOTES RE: RICHCO, INC.	DWN: D.D DT: 05-21-96 DT:	APP: RICHCO INC. PO BOX 804238, CHICAGO, 60680 (773) 539-4060	DWG IN IN (MM) FINAL	PART # SEE TABLE	PRINT TYPE CA
D		SEE CO 200604 FOR CHANGES	SK	12.01.10							
C		SEE CO 200041 FOR CHANGES	SK	09.28.07							
B		SEE ECN #863 FOR CHANGES	SM	10.04.04							
A		CHANGED FILE NO. AND TITLE BLOCK	SM	03.21.02							