



Excellent Integrated System Limited

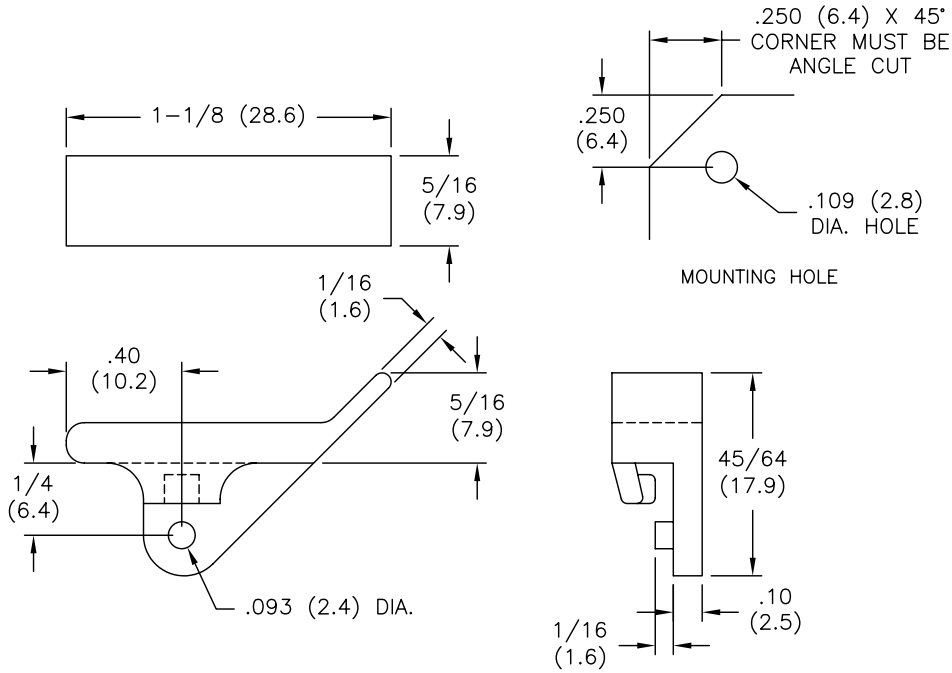
Stocking Distributor

Click to view price, real time Inventory, Delivery & Lifecycle Information:

[Essentra Components \(formerly Richco, Inc.\)](#)
[CBE-12](#)

For any questions, you can email us directly:
sales@integrated-circuit.com

PART NO.	COLOR
CBE-8	NATURAL
CBE-9	GREEN
CBE-11	BLACK
CBE-12	BROWN
CBE-13	RED
CBE-14	ORANGE
CBE-15	YELLOW
CBE-16	BLUE
CBE-17	VIOLET
CBE-18	GRAY



NOTES:

- MAT'L: NYLON 66 (RMS-01), COLOR: SEE TABLE
- CBE-8 AVAILABLE IN FLAME RETARDANT NYLON (RMS-19) BY SPECIAL ORDER

TITLE: CIRCUIT BOARD EJECTOR			DWG IN IN (MM)	FINAL	PRINT TYPE
TOLERANCES UNLESS NOTED .XX=±.010 .XXX=±.005 FRAC=±1/64 ANG=±1°			FILE # CBE	DWN: P.B.	APP:
RE: RICHCO, INC.			MAT'L: SEE NOTES	DT: 05-25-95	DT:
B CHANGED FILE NO. AND TITLE BLOCK SM 05.15.01			PART #		SEE TABLE
A NOTE 2. ADDED (RMS-19) JP 11.14.97			FINAL		
REV DESCRIPTION ENGR DATE			PRINT TYPE		
			CA		