



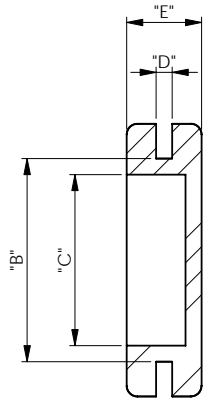
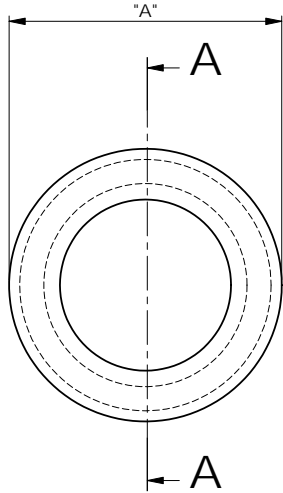
Excellent Integrated System Limited

Stocking Distributor

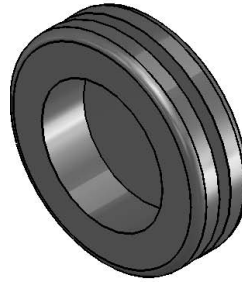
Click to view price, real time Inventory, Delivery & Lifecycle Information:

[Essentra Components \(formerly Richco, Inc.\)](#)
[DGB-2.5](#)

For any questions, you can email us directly:
sales@integrated-circuit.com



SECTION A-A



REV.	MODIFICATION.	DATE	DRN
A	NEW DWG	221295	
B	SCN99-027	290499	JPM
C	SCN01-110	251001	JPM
D	ECN#802	160604	NJB
E	ECR05-041	310305	NBr
06	ECR06-032	180106	OW
07	ECR06-035	260106	OW
08	ECN07-050	270207	OW
09	CO2010506	101208	SF
10	CO2010770	18/08/09	OW

NOTES

- 1a) METRIC PRIMARY UNITS:mm
- 1b) IMPERIAL SECONDARY UNITS: [inches]
- 2) PARTS ALSO AVAILABLE IN V0 RATED MATERIAL (RMS-263) BY SPECIAL ORDER.
- 3) PARTS ALSO AVAILABLE IN V0 RATED WHITE MATERIAL (RMS-263) BY SPECIAL ORDER. ADD "V0WH" TO END OF PART NUMBER.

ALTERNATE UNITS FOR REFERENCE ONLY

INFORMATION CONTAINED IN THIS DOCUMENT IS CONFIDENTIAL TO RICHCO INTERNATIONAL Co. Ltd. AND MAY NOT BE DISCLOSED OR REPRODUCED IN WHOLE OR PART WITHOUT THEIR WRITTEN CONSENT.

RICHCO, INC.
 WWW.RICHCO-INC.COM

GENERAL TOLERANCE:
 FOR REFERENCE ONLY ±0.5 [.02]
 UNLESS OTHERWISE STATED
 ANGULAR ±1°



PART No.	"A"	"B"	"C"	"D"	"E"
DGB-2.5	9.4 [.37]	6.4 [.25]	4.1 [.16]	0.8 [.03]	3.6 [.14]
DGB-4	12.7 [.50]	9.9 [.39]	6.4 [.25]	1.5 [.06]	6.6 [.26]
DGB-5	15.7 [.62]	12.5 [.49]	9.5 [.37]		6.4 [.25]
DGB-6	17.5 [.69]	11.0 [.43]	8.0 [.31]		8.0 [.31]
DGB-7	19.0 [.75]	16.0 [.63]	11.0 [.43]		8.0 [.31]
DGB-10	25.5 [1.00]	22.0 [.87]	18.4 [.72]		7.0 [.28]
DGB-11	19.0 [.75]	19.0 [.75]	16.0 [.63]	8.0 [.31]	
DGB-13	30.0 [1.18]	25.5 [1.00]	20.5 [.81]		

MATERIAL: TPE (RMS-262)		COLOUR: BLACK	
DESCRIPTION: DIAPHRAGM GROMMET, BLIND		PART No: SEE TABLE	
DRG No: 770-0001	NPR No: N/A	SHEET SIZE	A4
DRN OW	DATE 31/03/05	CHKD NBr	DATE 31/03/05
SCALE NTS	SHEET No. 1 OF 1		