

Excellent Integrated System Limited

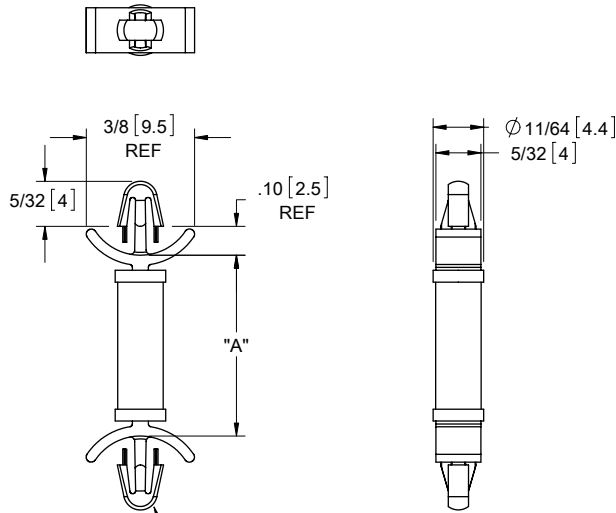
Stocking Distributor

Click to view price, real time Inventory, Delivery & Lifecycle Information:

[Essentra Components \(formerly Richco, Inc.\)](#)
[DLCBSM-3-01](#)

For any questions, you can email us directly:

sales@integrated-circuit.com



TO SNAP-LOCK IN A .125±.002
 [3.18±0.05] DIA. HOLE, IN A
 .031-.078 [0.79-1.98] PANEL THICKNESS
 (BOTH ENDS)

MATERIAL: NYLON 6/6 UL 94 V-2 (RMS-01) COLOR: NATURAL PART NO.	DIM. "A"±.015 [0.4]
DLCBSM-3-01	3/16 [4.8]
DLCBSM-4-01	1/4 [6.4]
DLCBSM-5-01	5/16 [7.9]
DLCBSM-6-01	3/8 [9.5]
DLCBSM-7-01	7/16 [11.1]
DLCBSM-8-01	1/2 [12.7]
DLCBSM-9-01	9/16 [14.3]
DLCBSM-10-01	5/8 [15.9]



NOTES:

1. MATERIAL: NYLON 6/6 UL 94 V-0 (RMS-19)
COLOR: NATURAL.
AVAILABLE BY SPECIAL ORDER ONLY.
2. ALTERNATE UNITS FOR REFERENCE ONLY.

D	REDRAWN, SEE ECN #1208 FOR CHANGES	SK	11/29/06
-	SEE ENGINEERING FOR REVISIONS A-C	---	----
REV.	DESCRIPTION	ENGR.	DATE

TITLE: DUAL LOCKING CIRCUIT BOARD SUPPORT, MINI					DWG IN IN [MM]	
CREATED USING SOLIDWORKS	FILE #: DLCBSM	DWN: SK	APP: RT	FINAL		
TOLERANCES UNLESS NOTED	SHEET: 1 OF 1	SHEET SIZE: A	DT: 11/29/06	CHKD: SJ	PART #	PRINT TYPE
XX±.010 XXX±.005 FRAC: ±1/64 ANG: ±1°	RE: RICHCO, INC.		RICHCO, INC. ENG@RICHCO-INC.COM (773) 539-4060		SEE TABLE	CA