



## Excellent Integrated System Limited

Stocking Distributor

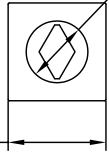
Click to view price, real time Inventory, Delivery & Lifecycle Information:

[Essentra Components \(formerly Richco, Inc.\)](#)  
[EG-0-01](#)

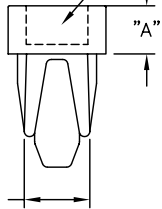
For any questions, you can email us directly:  
[sales@integrated-circuit.com](mailto:sales@integrated-circuit.com)

.24 (6.1) DIA.

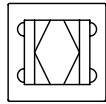
.38 (9.6)  
SQ.



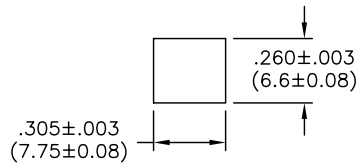
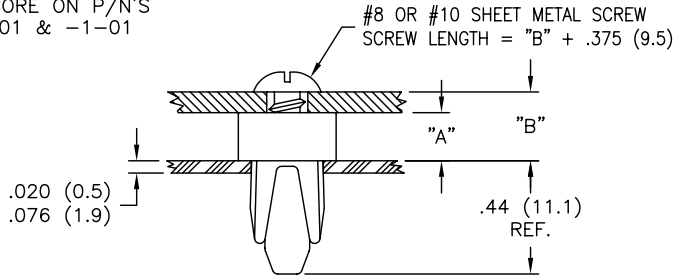
NO C'BORE ON P/N'S  
EG-0-01 & -1-01



.25 (6.4)



TYPICAL APPLICATION



MOUNTING HOLE

PART NO.	"A"
EG-0-01	1/32 (0.8)
EG-1-01	1/16 (1.6)
EG-2-01	1/8 (3.2)
EG-3-01	3/16 (4.8)
EG-4-01	1/4 (6.4)
EG-5-01	5/16 (7.9)
EG-6-01	3/8 (9.5)
EG-7-01	7/16 (11.1)
EG-8-01	1/2 (12.7)

NOTES:

- MATERIAL: NYLON 6/6 (RMS-01).  
FLAME RETARDANT, NYLON (RMS-19),  
AVAILABLE BY SPECIAL ORDER ONLY.
- COLOR: NATURAL.

TITLE: EXPANSION GROMMET		DWG IN IN (MM)		FINAL	
TOLERANCES UNLESS NOTED .XX=±.010 .XXX=±.005 FRAC=±1/64 ANG=±1°	FILE # EG-X	DWN: J.B.	APP:	PART #	PRINT TYPE
	MAT'L: SEE NOTES	DT: 08-01-97	DT:	SEE TABLE	CA
	RE: RICHCO INC	RICHCO INC. PO BOX 804238, CHICAGO, 60680 (773) 539-4060			

I	SEE ECN #564 FOR CHANGES	SM 01.23.03
H	UPDATED PRINT AND CHANGED FILE NO.	SM 05.13.02
-	SEE ENGINEERING FOR REV A-G	-
REV	DESCRIPTION	ENGR DATE