



Excellent Integrated System Limited

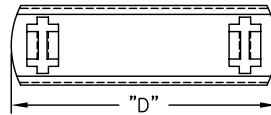
Stocking Distributor

Click to view price, real time Inventory, Delivery & Lifecycle Information:

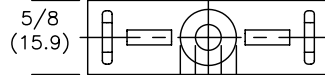
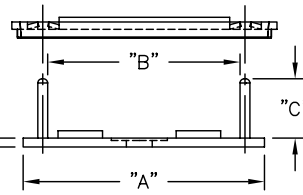
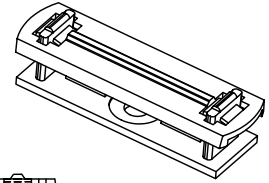
[Essentra Components \(formerly Richco, Inc.\)](#)
[FCRC-13B-4](#)

For any questions, you can email us directly:
sales@integrated-circuit.com

BASE PART NO.	"A" REF.	"B" REF.	"C"	COVER PART NO.	"D" REF.
FCRC-13B-4-01	2.04 (51.7)	1.62 (41.2)	1/2 (12.7)	FCRC-13C	2.24 (56.8)
FCRC-13B-6-01			3/4 (19.1)		
FCRC-19B-4-01	2.72 (69.1)	2.31 (58.7)	1/2 (12.7)	FCRC-19C	2.92 (74.2)
FCRC-19B-6-01			3/4 (19.1)		
FCRC-21B-4-01	2.98 (75.7)	2.55 (64.8)	1/2 (12.7)	FCRC-21C	3.17 (80.5)
FCRC-21B-6-01			3/4 (19.1)		
FCRC-26B-4-01	3.66 (93.0)	3.24 (82.3)	1/2 (12.7)	FCRC-26C	3.86 (98.0)
FCRC-26B-6-01			3/4 (19.1)		



COVER



BASE

NOTES:

- MATERIAL: NYLON 6/6 (RMS-01).
FLAME RETARDANT NYLON (RMS-19),
AVAILABLE BY SPECIAL ORDER ONLY.
- COLOR: NATURAL.
- TAPE:
1/32 (0.8) THICK, ACRYLIC ADHESIVE TAPE
(RMS-15), WHITE LINER,
AVAILABLE BY SPECIAL ORDER ONLY.
TO ORDER, SPECIFY A-RT AS SUFFIX.
1/32 (0.8) THICK, RUBBER ADHESIVE TAPE
(RMS-102), BLUE LINER,
AVAILABLE BY SPECIAL ORDER ONLY.
TO ORDER, SPECIFY A1-RT AS SUFFIX.

TITLE: FLAT CABLE ROUTING CLAMP					DWG IN		PRINT
TOLERANCES UNLESS NOTED				FILE #	FCRC	DWN:	SM
.XX=±.010				MAT'L:	SEE NOTES	DT:	03/05/02
.XXX=±.005				RE:	RICHCO, INC.	APP:	
FRAC=±1/64				PO BOX 804238, CHICAGO, 60680			
ANG=±1°				(773) 539-4060			
				PART #		FINAL	
				SEE TABLE		CA	

E	COMPLETELY RE-DRAWN	SM	03.05.02
-	SEE ENGINEERING FOR REV A-D	-	-
REV	DESCRIPTION	ENGR	DATE