



Excellent Integrated System Limited

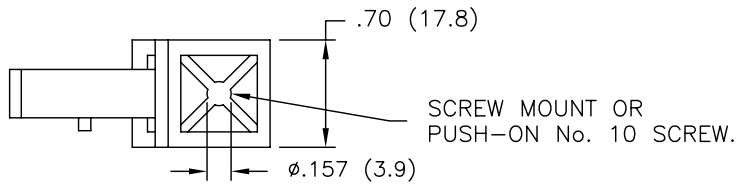
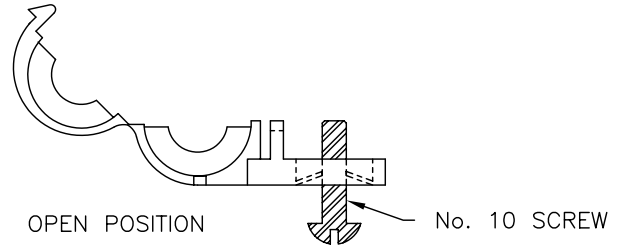
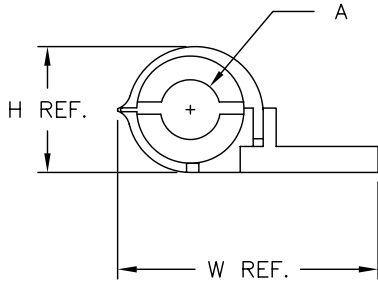
Stocking Distributor

Click to view price, real time Inventory, Delivery & Lifecycle Information:

[Essentra Components \(formerly Richco, Inc.\)](#)
[HQC-39](#)

For any questions, you can email us directly:
sales@integrated-circuit.com

PART NUMBER	A (NOM. BUNDLE DIA.)	H REF.	W REF.
No. HQC-39	.390 (9.9)	.79 (20.1)	1.65(41.9)
No. HQC-74	.748 (18.9)	1.09(27.6)	1.89(48.0)



NOTES:

1. MATERIAL: NYLON 66.
2. COLOR: BLACK.

TITLE: HINGED QUICK CLIP			DWG IN IN.(MM)		FINAL	
D	CORRECTED NO. 10 STUD TO NO. 10 SCREW	SM 03.26.01	FILE #	HQC	DWN:	E.P.
C	NOM. BUNDLE DIA WAS MAX. BUNDLE DIA.	JL 4/26/99	MAT'L:	SEE NOTES	DT:	9-23-98
B	ADDED DIM. "A" AND REMOVED COLUMN "B"	AM 4.13.99	RE:	RICHCO, INC.	DT:	
A	DIM "H" AND "W" ADDED TO PRINT	J.L. 4.7.99		RICHCO INC.		
REV	DESCRIPTION	ENGR DATE		PO BOX 804238, CHICAGO, 60680		
				(773) 539-4060		
					PART #	HQC-SERIES
					PRINT TYPE	CA