



Excellent Integrated System Limited

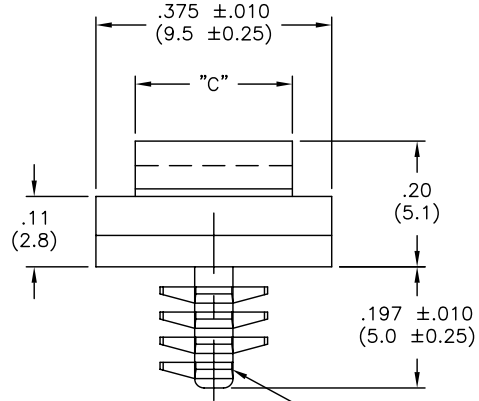
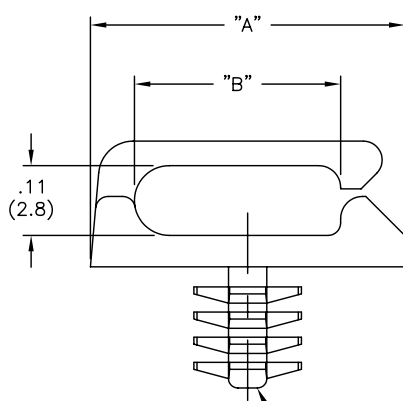
Stocking Distributor

Click to view price, real time Inventory, Delivery & Lifecycle Information:

[Essentra Components \(formerly Richco, Inc.\)](#)
[MBHWSSE-1-01](#)

For any questions, you can email us directly:
sales@integrated-circuit.com

PART NO.	"A"±.010 (±0.25)	"B"±.010 (±0.25)	"C"±.010 (±0.25)
MBHWSSE-1-01	.50 (12.7)	.33 (8.3)	.25 (6.4)
MBHWSSE1-1-01	.67 (17.0)	.49 (12.5)	.315 (8.0)



TO PRESS FIT IN A .156±.003
(3.96±0.08) DIA. HOLE, IN A
.04 TO .16 (1.00 TO 4.06)
THICK PANEL.

TYPICAL EJECTOR
PIN LOCATION
(SEE NOTE 3.)

NOTES:

1. MATERIAL: NYLON 6/6, RMS-01.
FLAME RETARDANT NYLON (RMS-19)
AVAILABLE BY SPECIAL ORDER.
2. COLOR: NATURAL.
3. FIN WILL ONLY APPEAR ON LEFT
OR RIGHT SIDE, IN THIS VIEW

TITLE: MICRO-BLIND HOLE, WIRE SADDLE, SIDE ENTRY		DWG IN IN (MM)		FINAL		PRINT TYPE	
TOLERANCES UNLESS NOTED .XX=±.010 .XXX=±.005 FRAC=1/64 ANG=1°		FILE # MBHWSSE	DWN: S.M.	APP:	PART #		CA
RE: RICHCO, INC.		MAT'L: SEE NOTES	DT: 3/23/01	DT:	SEE TABLE		
B SEE ECN #1354 FOR CHANGES SK 08.20.07		RICHCO INC. PO BOX 804238, CHICAGO, 60680 (773) 539-4060		A SEE ECN #503 FOR CHANGES SM 10.25.02			
REV DESCRIPTION ENGR DATE							