



## Excellent Integrated System Limited

Stocking Distributor

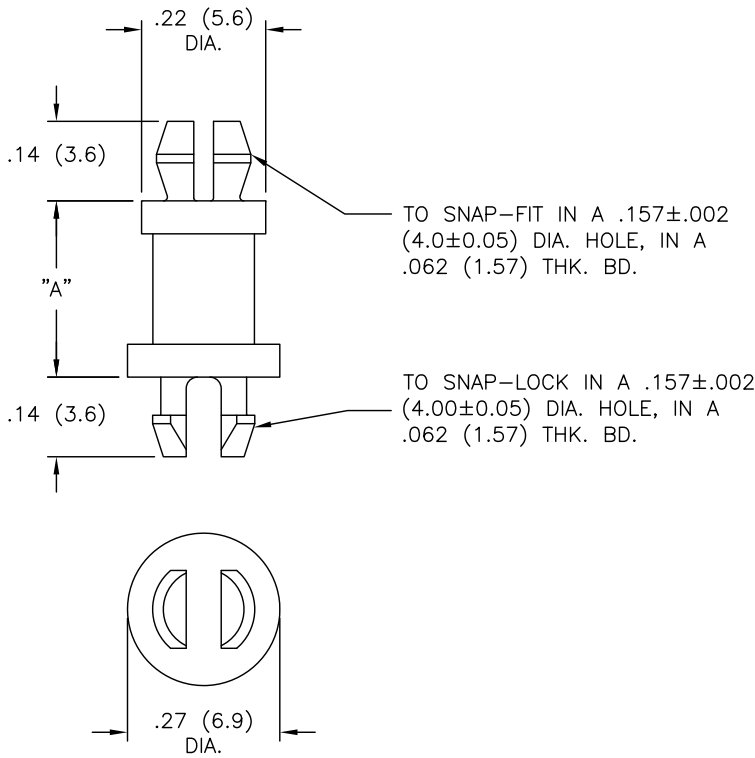
Click to view price, real time Inventory, Delivery & Lifecycle Information:

[Essentra Components \(formerly Richco, Inc.\)](#)

[MSPS-4-01](#)

For any questions, you can email us directly:

[sales@integrated-circuit.com](mailto:sales@integrated-circuit.com)



NYLON 6/6 (RMS-01) COLOR: NATURAL PART NO.	FLAME RET. (RMS-19) COLOR: NATURAL PART NO.	DIM. "A"
MSPS-3-01	MSPS-3-19	3/16 (4.8)
MSPS-4-01	MSPS-4-19	1/4 (6.4)
MSPS-5-01	MSPS-5-19	5/16 (7.9)
MSPS-6-01	MSPS-6-19	3/8 (9.5)
MSPS-7-01	MSPS-7-19	7/16 (11.1)
MSPS-8-01	MSPS-8-19	1/2 (12.7)
MSPS-10-01	MSPS-10-19	5/8 (15.9)
MSPS-11-01	MSPS-11-19	11/16 (17.5)
MSPS-12-01	MSPS-12-19	3/4 (19.1)
MSPS-14-01	MSPS-14-19	7/8 (22.2)

E	SEE CO 200628 FOR CHANGES	SK 02.17.11
D	SEE CO 200053 FOR CHANGES	RG 10.24.07
C	SEE ECN #862 FOR CHANGES	SM 10.04.04
B	SEE ENC #496 FOR CHANGES	SM 10.23.02
A	REMOVED NOTES; ADDED COLUMN "-19" AND "-01 TO P/N; CHANGED FILE NO.	SM 08.15.02
REV	DESCRIPTION	ENGR DATE

TITLE: MINIATURE SUPPORT POST		⊕	▭	DWG IN IN (MM)	Ⓜ
TOLERANCES UNLESS NOTED .XX=±.010 .XXX=±.005 FRAC=±1/64 ANG=±1°	FILE # MSPS	DWN: P.B.	APP:	FINAL	
MAT'L: SEE TABLE	RE: RICHCO, INC.	DT: 04-18-94	DT:	PART #	PRINT TYPE
		RICHCO INC. PO BOX 804238, CHICAGO, 60680 (773) 539-4060		SEE TABLE	CA