

Excellent Integrated System Limited

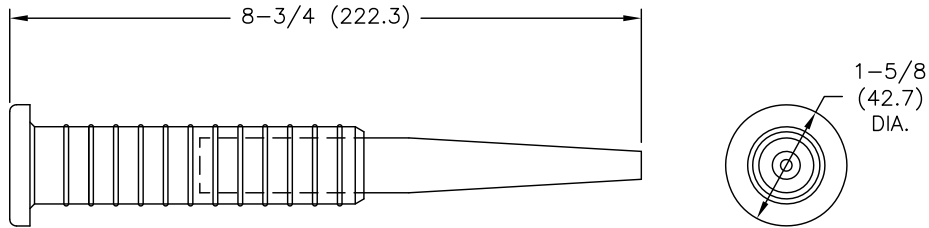
Stocking Distributor

Click to view price, real time Inventory, Delivery & Lifecycle Information:

[Essentra Components \(formerly Richco, Inc.\)](#)
[PPR-T1](#)

For any questions, you can email us directly:
sales@integrated-circuit.com

PART #	FOR USE WITH	PIN DIA.
PPR-T1	PPR-1,2,5,93-14,93-7	.125(3.2)
PPR-T4	PPR-4,9	.150(3.8)



ALL DIMENSIONS ARE FOR REFERENCE ONLY.

NOTES:

PPR-T1: BODY - PLASTIC, YELLOW.

PPR-T4: BODY - PLASTIC, GREEN.

INSERTION PIN - METAL.

C		SEE CO 200674 FOR CHANGES	SK 05.31.11	TOLERANCES UNLESS NOTED .XX=±.020 .XXX=±.015 FRAC=±1/32 ANG=±1°	FILE #	PPR-T	DWN: MAH	APP:	DWG IN IN (MM) FINAL	
B		SEE CO 200639 FOR CHANGES	SK 03.18.11		MAT'L:	SEE NOTES	DT: 09-17-96	DT:		
A		CHANGED FILE NO. AND TITLE BLOCK	SM 05.17.01		RE:	RICHCO, INC.	RICHCO INC. PO BOX 804238, CHICAGO, 60680 (773) 539-4060		SEE TABLE	PRINT TYPE CA
REV		DESCRIPTION	ENGR DATE							