



Excellent Integrated System Limited

Stocking Distributor

Click to view price, real time Inventory, Delivery & Lifecycle Information:

[Essentra Components \(formerly Richco, Inc.\)](#)
[QM2](#)

For any questions, you can email us directly:
sales@integrated-circuit.com

PART NO.	"A" ±.020 (±0.5)	"B" DIA. ±.020 (±0.5)	STUD THD. "S"	INSERT THD. "I"	FIG. NO.
QM1	7/16 (11.1)	7/16 (11.1)	#6-32 X 1/4	----	1
QM1T				#6-32 X 3/16	2
QM2			----	1	
QM2T			#6-32 X 3/16	2	
QM3	1/2 (12.7)	9/16 (14.3)	#8-32 X 3/8	----	1
QM3T				#8-32 X 3/16	2
QM4			----	1	
QM4T			#8-32 X 3/16	2	
QM5	3/4 (19.1)	1.0 (25.4)	#1/4-20 X 1/2	----	1
QM5T		1-1/4 (31.8)	#5/16-18 X 9/16	#1/4-20 X 3/8	2
QM6		----	1		
QM6T		#5/16-18 X 3/8	2		
QM7	9/16 (14.3)	1/2 (12.7)	#10-32 X 3/8	----	1
QM7T				#10-32 X 3/16	2

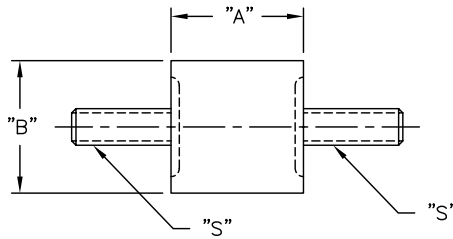


FIG. 1

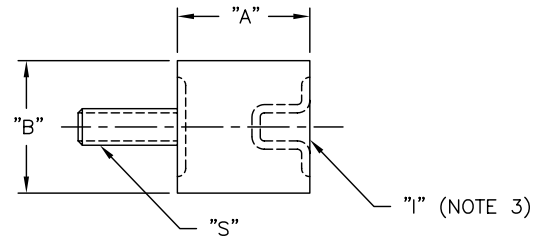


FIG. 2

NOTES:

- MATERIAL: NATURAL RUBBER, 40 DUROMETER; THREADED METAL INSERTS, 1010-1020 STEEL YELLOW CHROMATE OVER ZINC PLATE.
- COLOR: BLACK.
- THREADED METAL INSERT MAY BE BLIND CUP, OR THROUGH-NUT.

TITLE: QUIET MOUNT SPACERS			DWG IN IN (MM)		FINAL		PRINT TYPE																
TOLERANCES UNLESS NOTED .XX=±.010 .XXX=±.005 FRAC=±1/64 ANG=±1°			FILE # QM	DWN: P.B.	APP:	PART #		CA															
RE: RICHCO, INC.			DT: 04-18-94 DT:		SEE TABLE																		
<table border="1"> <tr> <th>REV</th> <th>DESCRIPTION</th> <th>ENGR</th> <th>DATE</th> </tr> <tr> <td>C</td> <td>UPDATED NOTES AND ADDED NOTE 3.</td> <td>SM</td> <td>08.08.02</td> </tr> <tr> <td>B</td> <td>CHANGED FILE NO. AND MODIFIED TABLE</td> <td>SM</td> <td>10.19.01</td> </tr> <tr> <td>A</td> <td>P/N QM-2 & QM-2T 1/2 WAS 1/4</td> <td>JB</td> <td>04.24.96</td> </tr> </table>			REV	DESCRIPTION	ENGR	DATE	C	UPDATED NOTES AND ADDED NOTE 3.	SM	08.08.02	B	CHANGED FILE NO. AND MODIFIED TABLE	SM	10.19.01	A	P/N QM-2 & QM-2T 1/2 WAS 1/4	JB	04.24.96	RICHCO INC. PO BOX 804238, CHICAGO, 60680 (773) 539-4060				
REV	DESCRIPTION	ENGR	DATE																				
C	UPDATED NOTES AND ADDED NOTE 3.	SM	08.08.02																				
B	CHANGED FILE NO. AND MODIFIED TABLE	SM	10.19.01																				
A	P/N QM-2 & QM-2T 1/2 WAS 1/4	JB	04.24.96																				