



## Excellent Integrated System Limited

Stocking Distributor

Click to view price, real time Inventory, Delivery & Lifecycle Information:

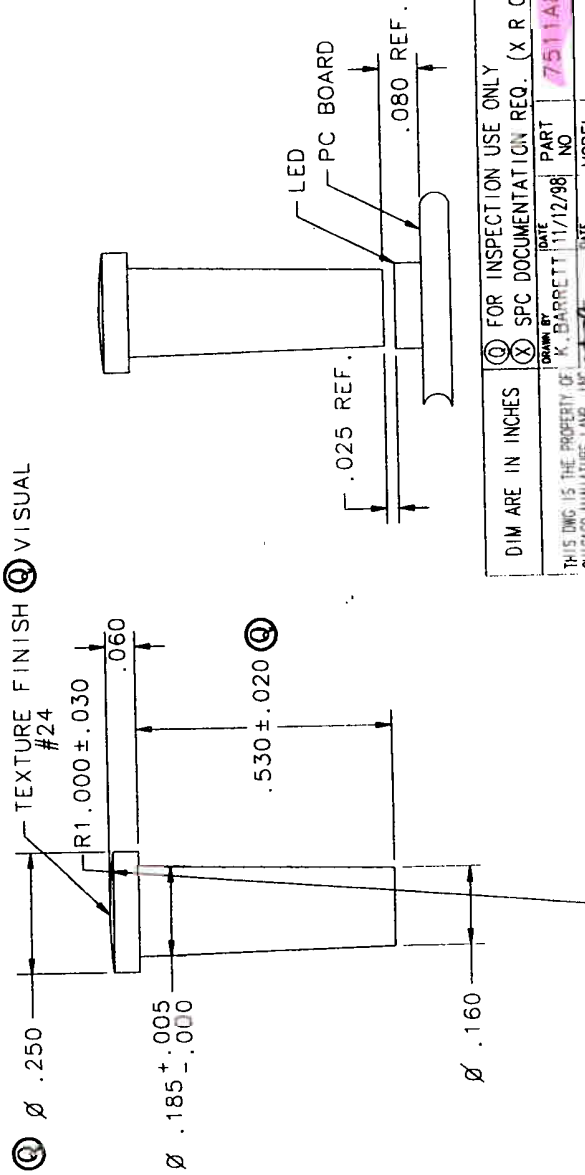
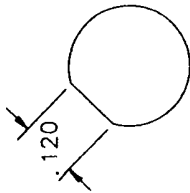
[Visual Communications Company, LLC](#)  
[7511A86](#)

For any questions, you can email us directly:

[sales@integrated-circuit.com](mailto:sales@integrated-circuit.com)

REVISIONS			
REV	ECR NO	DESCRIPTION	DATE
A	16926	NEW RELEASE	10/5/98
B	17117	CHG'D DIST KB	11/12/98

- NOTES:
1. LIGHTPIPE TO BE MOLDED IN A CLEAR 94-V0 POLYCARBONATE COMPONENT TO BE FREE OF IMPERFECTIONS WHICH WOULD INTERFERE WITH THE DESIGNED LIGHT OUTPUT.
  2. WHICH WOULD INTERFERE WITH THE DESIGNED LIGHT OUTPUT.



**DO NOT SCALE**

DIM ARE IN INCHES  
 (C) FOR INSPECTION USE ONLY  
 (X) SPC DOCUMENTATION REQ. (X R CHARTS)

THIS Dwg IS THE PROPERTY OF CHICAGO MINIATURE LAMP, INC. AND THE PROPRIETARY IN GENERAL AND IN DETAIL. IT SHALL NOT BE COPIED OR ITS CONTENTS REVEALED TO OUTSIDE PARTIES WITHOUT THE WRITTEN CONSENT OF CHICAGO MINIATURE LAMP, INC.	DATE: 11/12/98	PART NO: 7511A86	MODEL NO:	MOLD NO:	TITLE: VERTICAL LIGHTPIPE
DRAWN BY: K. BARRETT	DATE: 11/12/98	DATE: 11/12/98	DATE: 11/12/98	DATE: 11/12/98	DATE: 11/12/98
UNLESS OTHERWISE SPECIFIED, ALL DIMENSIONS ARE IN INCHES. TOLERANCES ARE: .XXX ± .XXX	UNLESS OTHERWISE SPECIFIED, ALL DIMENSIONS ARE IN INCHES. TOLERANCES ARE: .XXX ± .XXX	UNLESS OTHERWISE SPECIFIED, ALL DIMENSIONS ARE IN INCHES. TOLERANCES ARE: .XXX ± .XXX	UNLESS OTHERWISE SPECIFIED, ALL DIMENSIONS ARE IN INCHES. TOLERANCES ARE: .XXX ± .XXX	UNLESS OTHERWISE SPECIFIED, ALL DIMENSIONS ARE IN INCHES. TOLERANCES ARE: .XXX ± .XXX	UNLESS OTHERWISE SPECIFIED, ALL DIMENSIONS ARE IN INCHES. TOLERANCES ARE: .XXX ± .XXX
FINISH: NOTED	SCALE: 4 : 1	DWG NO: B15413	REV: B	SHEET: 1 OF 1	

CHICAGO MINIATURE LAMP, NC  
 147 CENTRAL AVE. HACKENSACK, NJ 07601

SDRC FILE NAME: 7511A86\_1198\_KB.MF1