

## Excellent Integrated System Limited

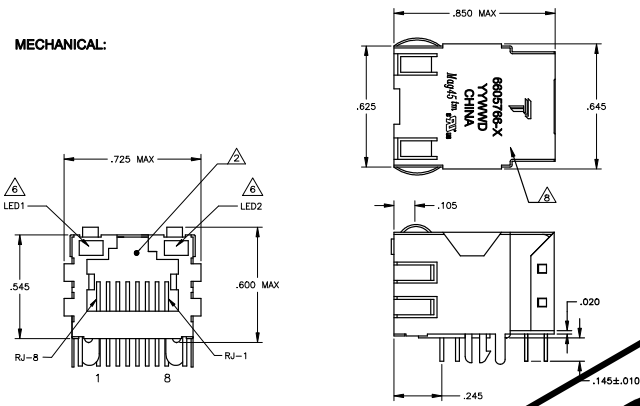
Stocking Distributor

Click to view price, real time Inventory, Delivery & Lifecycle Information:

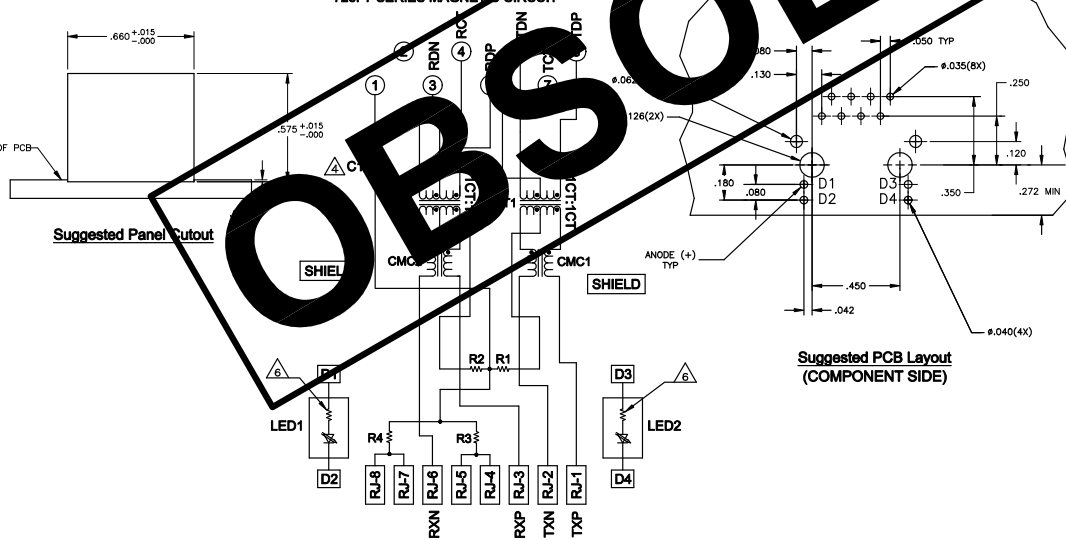
[Bel Fuse Inc.](#)  
[5-6605766-9](#)

For any questions, you can email us directly:  
[sales@integrated-circuit.com](mailto:sales@integrated-circuit.com)

**MECHANICAL:**



**726P7 SERIES MAGNETIC CIRCUIT**



C1 = 1000 pF, 2kV DECOUPLING CAPACITOR  
 R1-R4 = 75 OHMS, 1/16W, 5% RESISTORS

- △ MATERIALS:  
 - HOUSING - THERMOPLASTIC PET POLYESTER FLAMMABILITY RATING UL 94V-0.  
 - SHIELD - .010" THICK, C26800 BRASS PREPLATED WITH 30μINCH MIN SEMI-BRIGHT  
 SOLDER TABS POST DIPPED WITH 100μINCH MIN SAC SOLDER.  
 - HOUSING CONTACTS - 0.0157" x 0.018" PHOSPHOR BRONZE, 50μINCH MIN OVERALL  
 NICKEL UNDERPLATE, WITH SELECT 50μINCH MIN HARD GOLD FINISH PLATE.  
 SOLDER TABS WITH 100μINCH MIN MATTE TIN AND/OR SAC SOLDER DIP.  
 - LIGHT EMITTING DIODE (LED) - DIFFUSED EPOXY LENS, .020" x .020" CARBON STEEL  
 FRAME TABS PRE-PLATED WITH 80μINCH SILVER OVER 40μINCH NICKEL  
 UNDERPLATE OVER 40μINCH COPPER UNDERPLATE, POST-PLATED WITH  
 100μINCH MIN MATTE TIN AND/OR SAC SOLDER DIP OR PURE TIN SOLDER DIP.
- △ RALS JAW CAVITY CONFORMS TO FCC RULES AND REGULATIONS PART 68, SUB  
 PART 11.
- △ PHYSICALS:  
 - IMPEDANCE: 100 OHMS  
 - TURNS RATIO: VARIABLE, TX = 11, RX = 11  
 - OPEN CIRCUIT CAPACITANCE (O.C.): 350pH MIN @100kHz, 0.1VRMS,  
 MEASURED FROM 0°C TO 70°C, TX AND RX  
 - INSERTION LOSS (IL): 1.1dB MAX FROM 0.5MHz TO 100MHz  
 RETURN LOSS (RL): 18dB MIN FROM 0.5MHz TO 30MHz  
 18-20dBG/30dB MIN FROM 30.1MHz TO 60MHz  
 12dB MIN FROM 60.1MHz TO 80MHz  
 CROSSTALK ATTENUATION: 35dB MIN FROM 0.5MHz TO 40MHz  
 33-20dBG/50dB MIN FROM 40.1MHz TO 100MHz  
 - COMMON MODE REJECTION RATIO (CMRR): 30dB MIN FROM 0.5MHz TO 100MHz  
 - ISOLATION VOLTAGE: 2250VDC (MAX) FOR 60 SECONDS WITH A RISE TIME OF  
 500V/SEC.
- △ C1 IS AN OPTIONAL. IF NOT CAPACITOR, TRACE IS CONTINUOUS
- 5. OPERATING TEMPERATURE: FROM 0° TO -70°C
- △ THE 250 OHM LED RESISTORS ARE OPTIONAL, PLEASE SEE CHART FOR PRESENCE OR  
 ABSENCE OF LED RESISTORS. IF THE LED WITHOUT 250 OHM RESISTORS, LED IS  
 DRIVEN WITH CONSTANT CURRENT AT APPROX 20mA.  
 LED COLOR: DOMINANT WAVELENGTH (λD): GREEN 568 nm TYP. @ IF=20mA  
 FORWARD VOLTAGE (VF): GREEN 2.2V TYP. @ IF=20mA  
 DOMINANT WAVELENGTH (λD): YELLOW 588 nm TYP. @ IF=20mA  
 FORWARD VOLTAGE (VF): YELLOW 2.1V TYP. @ IF=20mA  
 DOMINANT WAVELENGTH (λD): ORANGE 605 nm TYP. @ IF=20mA  
 FORWARD VOLTAGE (VF): ORANGE 2.05V TYP. @ IF=20mA  
 IF THE LED WITH 250 OHM RESISTORS, LED IS DRIVEN WITH 5V VOLTAGE AND THE  
 MAX OPERATING CURRENT IS 20mA.  
 LED COLOR: DOMINANT WAVELENGTH (λD): GREEN 568 nm TYP. @ VF=5V  
 FORWARD CURRENT (IF): GREEN 12 mA TYP. @ VF=5V  
 DOMINANT WAVELENGTH (λD): YELLOW 588 nm TYP. @ VF=5V  
 FORWARD CURRENT (IF): YELLOW 13 mA TYP. @ VF=5V
- △ INDICATED CONNECTIONS ARE FOR NIC CONFIGURATION. THE MAGNETICS  
 ARE SYMMETRICAL TO SUPPORT AUTO-MDI/MDOX.
- △ TRP CONNECTOR LOGO, PART NUMBER, DATE CODE, COUNTRY OF ORIGIN AND AGENCY  
 APPROVAL MARKING IN APPROXIMATE LOCATION SHOWN.
- 9. THESE PARTS ARE RECOMMENDED FOR WAVE SOLDERING PROCESS. PEAK WAVE  
 SOLDERING TEMPERATURE IS 265°C, 10SECONDS MAX.

NO	YES	YELLOW	GREEN	5-6605766-9
YES	NO	GREEN	GREEN	5-6605766-1
NO	NO	GREEN	GREEN	1-6605766-1

LED RESISTOR (R)	DECOUPLING CAPACITOR (C)	LED1 (A)	LED2 (A)	PART NUMBER
NO	NO	NO	NO	TRP connector
NO	NO	NO	NO	Dongguan China

DESCRIPTION	REV	DATE	BY	CHKD	APP'D
INITIAL	DATE	BY	CHKD	APP'D	

OBSOLETE