

Excellent Integrated System Limited

Stocking Distributor

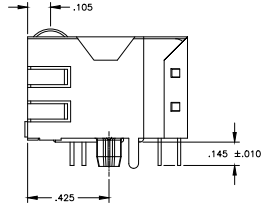
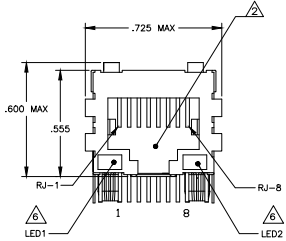
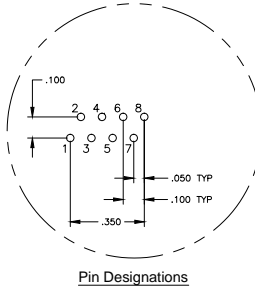
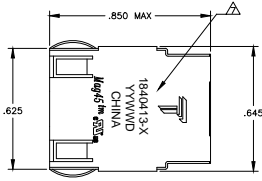
Click to view price, real time Inventory, Delivery & Lifecycle Information:

[Bel Fuse Inc.](#)
[1840413-8](#)

For any questions, you can email us directly:
sales@integrated-circuit.com

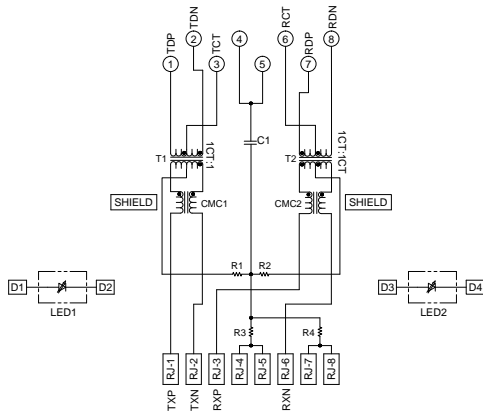
REVISIONS			
REV	DESCRIPTION	DATE	BY
1	INITIAL		
2	LOAD CHANGE	07/19/2013	PP KZ

MECHANICAL:

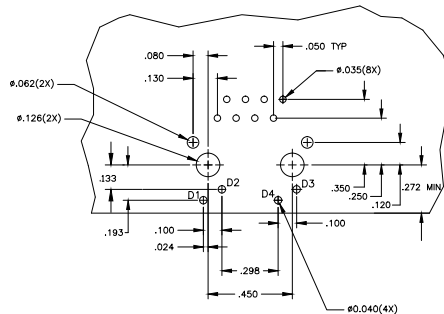


ELECTRICAL:

326P10 10/100 Base-T CIRCUIT

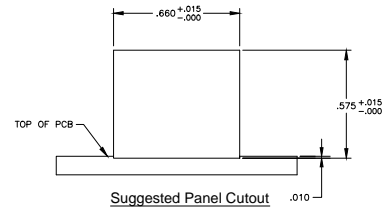


C1=1000 pF, 2KV CAPACITOR
R1-R4=75 OHMS, 5%, 1/16 W RESISTORS



Suggested PCB Layout (Component Side)

- △ MATERIALS:
-HOUSING - THERMOPLASTIC PET POLYESTER FLAMMABILITY RATING UL 94V-0.
-SHIELD - .010" THICK, C2800 BRASS PREPLATED WITH 30μINCH MIN SEMI-BRIGHT NICKEL;
-SOLDER TABS POST-DIPPED WITH 100μINCH MIN SAC SOLDER
-MOD JACK CONTACTS - .0157" x .018" THICK, PHOSPHOR BRONZE, 50μINCH MIN OVERALL NICKEL UNDERPLATE, WITH SELECT 50μINCH MIN HARD GOLD FINISH PLATE.
-SOLDER TAILS WITH 100μINCH MATTE TIN AND/OR SAC SOLDER DIP.
-LIGHT EMITTING DIODE(LED) - DIFFUSED EPOXY LENS, .020" x .020" CARBON STEEL WIREFRAME LEADS PREPLATED WITH 80 μINCH SILVER OVER 40 μINCH NICKEL UNDERPLATE OVER 40μINCH COPPER UNDERPLATE.
-POST-PLATED WITH 100 μINCH MIN MATTE TIN AND/OR SAC SOLDER DIP OR PURE TIN SOLDER DIP.
- △ RJ45 JACK CAVITY CONFORMS TO FCC RULES AND REGULATIONS PART 68, SUB PART F.
- △ MAGNETICS
-APPLICATION: 10/100 BASE-T
-IMPEDANCE: 100 OHMS
-TURNS RATIO (CHIP-CABLE): TX = 1:1, RX = 1:1
-OPEN CIRCUIT INDUCTANCE (OCL): 350μH MIN @100kHz, 0.1VRMS, 8mADC BIAS FROM 0°C TO 70°C, TX AND RX
-PERFORMANCE @ 25°C:
-INSERTION LOSS (IL): 1.1dB MAX FROM 0.5MHz TO 100MHz
-RETURN LOSS (RL): 18dB MIN FROM 0.5MHz TO 30MHz
-18-20LOG(I/30)dB MIN FROM 30.1MHz TO 60MHz
-12dB MIN FROM 60.1MHz TO 80MHz
-CROSSTALK ATTENUATION: 35dB MIN FROM 0.5MHz TO 40MHz
-33-20LOG(I/50)dB MIN FROM 40.1MHz TO 100MHz
-COMMON MODE REJECTION RATIO (CMRR): 30dB MIN FROM 0.5MHz TO 100MHz
-ISOLATION VOLTAGE: COMPLIES WITH IEEE802.3 2002, PARA 23.5.1.1, ITEM b.
- 4. OPERATING TEMPERATURE: FROM 0°C TO +70°C.
- △ THE MAGNETICS ARE SYMMETRICAL, AND SUPPORTS AUTO-MD/MDIX.
- △ LED IS DRIVEN WITH CONSTANT CURRENT AT APPROX 20mA.
LED COLOR: DOMINANT WAVELENGTH (λ D): GREEN 568 nm TYP, at IF=20mA
FORWARD VOLTAGE (VF): GREEN 2.2V TYP, at IF=20mA
DOMINANT WAVELENGTH (λ D): YELLOW 588 nm TYP, at IF=20mA
FORWARD VOLTAGE (VF): YELLOW 2.1V TYP, at IF=20mA
- △ TRP CONNECTOR LOGO, PART NUMBER, DATE CODE, COUNTRY OF ORIGIN AND AGENCY APPROVAL MARKING IN APPROXIMATE LOCATION SHOWN.
- 8. THE PART IS RECOMMENDED FOR WAVE SOLDERING PROCESS. PREHEAT TEMPERATURE IS 120°C TO 160°C, 120 SECONDS TO 180 SECONDS, PEAK WAVE SOLDERING TEMPERATURE IS 260°C MAX, 10 SECONDS MAX.



Suggested Panel Cutout

GREEN	YELLOW	1840413-8
LED1	LED2	PART NUMBER
TRP connector		TRP connector
Design Date		Design Date
108-2100		108-2100
SCHEMATIC, 326P10 MAGNETIC CIRCUIT, SHIELDED, SOLDERING CAPACITOR, WITH LEADS		SCHEMATIC, 326P10 MAGNETIC CIRCUIT, SHIELDED, SOLDERING CAPACITOR, WITH LEADS
A 100779		1840413
CUSTOMER DRAWING		CUSTOMER DRAWING