

Excellent Integrated System Limited

Stocking Distributor

Click to view price, real time Inventory, Delivery & Lifecycle Information:

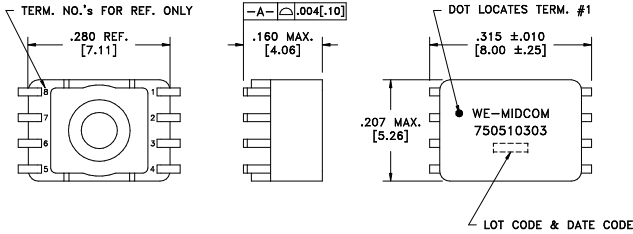
[Würth Electronics Midcom](#)
[750510303](#)

For any questions, you can email us directly:

sales@integrated-circuit.com

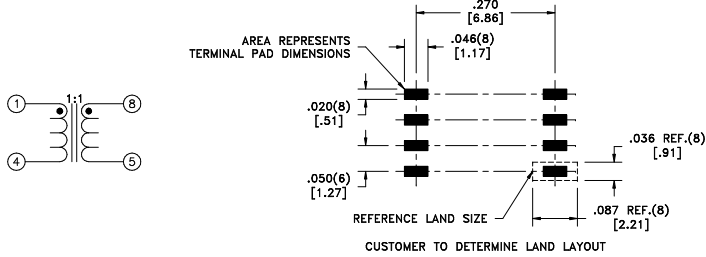
CUSTOMER	TERMINAL	RoHS	LEAD(Pb)-FREE
Sn96%, Ag4%	Yes	Yes	Yes

more than you expect



ELECTRICAL SPECIFICATIONS @ 25°C unless otherwise noted:

PARAMETER	TEST CONDITIONS	VALUE
D.C. RESISTANCE	1-4 @20°C	0.35 ohms max.
D.C. RESISTANCE	8-5 @20°C	0.35 ohms max.
INDUCTANCE	1-4 100kHz, 100mVAC, Ls	20uH min.
DIELECTRIC	1-8 800VAC, 1 second	500VAC, 1 minute
TURNS RATIO	(1-4):(8-5)	1:1, ±1%
COMMON MODE ATTENUATION	1MHz	-50dB typ.
COMMON MODE ATTENUATION	10MHz	-30dB typ.
COMMON MODE ATTENUATION	125MHz	-15dB typ.



GENERAL SPECIFICATIONS:
OPERATING TEMPERATURE RANGE: -40°C to +85°C.

DETAILS SUBJECT TO CHANGE

REV.	DATE	Packaging Specifications Method: Tape & Reel PKG-0510 www.we-online.com/midcom		Tolerances unless otherwise specified: Angles: ±1° Fractions: ±1/64 Decimals: ±.005 [.13] Footprint: ±.005 [.13]	DRAWING TITLE INDUCTOR CHOKE	PART NO. 750510303
6A	4/11	SEE REVISION SHEET FOR REVISION LEVEL	CONVENTION PLACEMENT	This drawing is dual dimensioned. Dimensions in brackets are in millimeters.	eiSos p/n: 750510303	SPECIFICATION SHEET 1 OF 1