

Excellent Integrated System Limited

Stocking Distributor

Click to view price, real time Inventory, Delivery & Lifecycle Information:

[Würth Electronics Midcom](#)
[750341689](#)

For any questions, you can email us directly:

sales@integrated-circuit.com

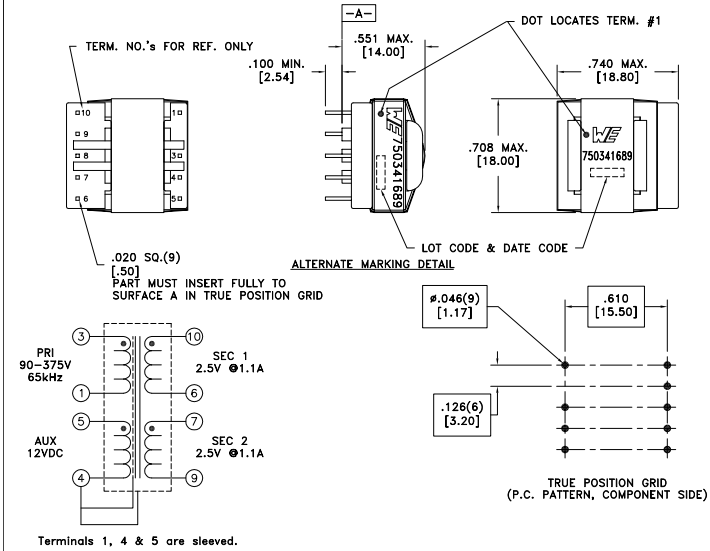
CUSTOMER TERMINAL	RoHS	LEAD(Pb)-FREE
Sn96%, Ag4%	Yes	Yes

Measure from solder side



ELECTRICAL SPECIFICATIONS @ 25°C unless otherwise noted:

PARAMETER	TEST CONDITIONS	VALUE
D.C. RESISTANCE	3-1 @20°C	3.86 ohms max.
D.C. RESISTANCE	5-4 @20°C	0.400 ohms max.
D.C. RESISTANCE	7-9 @20°C	0.020 ohms max.
D.C. RESISTANCE	10-6 @20°C	0.020 ohms max.
INDUCTANCE	3-1 50kHz, 100mVAC, Ls	1.60mH ±10%
LEAKAGE INDUCTANCE	3-1 tie(4+5, 6+7+9+10), 100kHz, 100mVAC, Ls	60uH max.
DIELECTRIC	1-10 tie(3+4, 6+7), 3500VAC, 1 second	-
DIELECTRIC	3-Core 2500VAC, 1 second	-
DIELECTRIC	10-Core tie(6+7), 1500VAC, 1 second	-
DIELECTRIC	3-10 tie(6+7), 500VAC, 1 second	-
URNS RATIO	(3-1):(5-4)	7.056:1, ±2%
URNS RATIO	(3-1):(10-6)	31.75:1, ±2%
URNS RATIO	(3-1):(7-9)	31.75:1, ±2%



GENERAL SPECIFICATIONS:

OPERATING TEMPERATURE RANGE: -40°C to +125°C.

Designed to comply with the following requirements as defined by IEC60950-1, EN60950-1, UL60950-1/CSA60950-1 and AS/NZS60950.1:
 - Reinforced insulation for a working voltage of 400VDC.

Wire insulation & RoHS status not affected by wire color.
 Wire insulation color may vary depending on availability.

REV.	DATE	Packaging Specifications	<p>Tolerances unless otherwise specified: Angles: ±1° Decimals: ±.005 [.13] Fractions: ±1/64 Footprint: ±.001 [.03]</p> This drawing is dual dimensioned. Dimensions in brackets are in millimeters.	DRAWING TITLE	PART NO.
6C	3/14	Method: Tray PKG-0887		TRANSFORMER	750341689
6B	12/13	www.we-online.com/midcom		eiSos p/n: 750341689	compliant
6A	1/13	SEE REVISION SHEET FOR REVISION LEVEL			SPECIFICATION SHEET 1 OF 1