

Excellent Integrated System Limited

Stocking Distributor

Click to view price, real time Inventory, Delivery & Lifecycle Information:

[Rohm Semiconductor](#)
[1SR124-400AT-81](#)

For any questions, you can email us directly:

sales@integrated-circuit.com

Diodes

High-speed rectifier diode

1SR124-400A

●Applications

High speed rectification

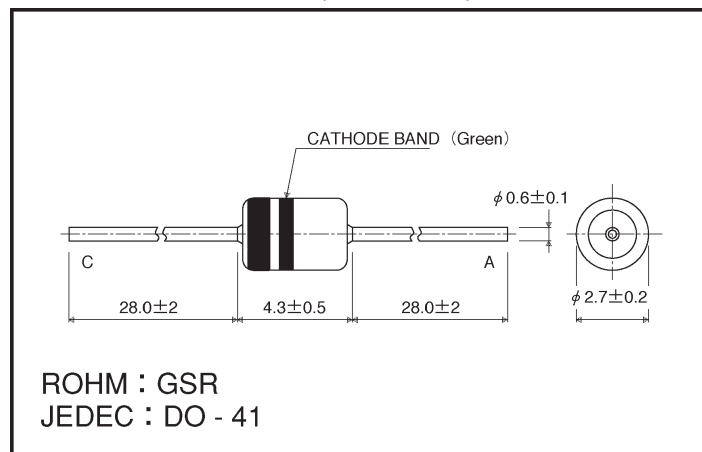
●Features

- 1) Glass sealed envelope. (JEDEC: DO-41)
- 2) High speed. ($t_{rr}=0.4\mu s$ Max.)
- 3) Assures 400V while maintaining high speed.

●Construction

Silicon diffusion junction

●External dimensions (Units: mm)



●Absolute maximum ratings ($T_a = 25^\circ C$)

Parameter	Symbol	Limits	Unit
Absolute peak reverse voltage	V_{RSM}	500	V
Peak reverse voltage	V_{RM}	400	V
Mean rectifying current	I_o	1	A
Peak forward surge current *	I_{FSM}	30	A
Junction temperature	T_j	150	$^\circ C$
Storage temperature	T_{stg}	-65 ~ +175	$^\circ C$

*60 Hz for 1 \varnothing

●Electrical characteristics ($T_a = 25^\circ C$)

Parameter	Symbol	Min.	Typ.	Max.	Unit	Conditions
Forward voltage	V_F	—	1.14	1.3	V	$I_F=1A$
Reverse current	I_R	—	0.20	10	μA	$V_R=400V$
Reverse recovery time	t_{rr}	—	0.2	0.4	μs	$I_F=I_R=10mA, I_{rr}=1mA$

Diodes

1SR124-400A

●Electrical characteristic curves (Ta = 25°C unless specified otherwise)

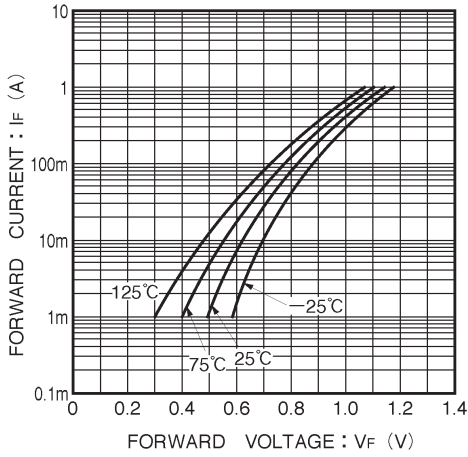


Fig. 1 Forward characteristics

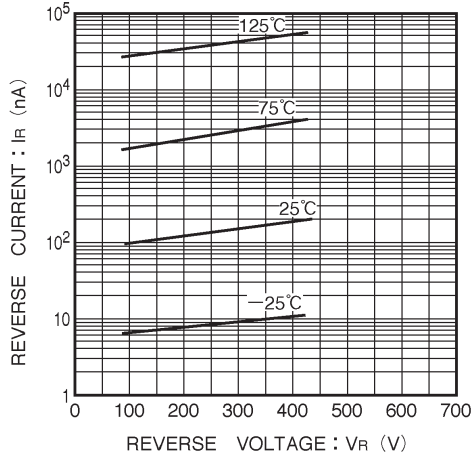


Fig. 2 Reverse characteristics

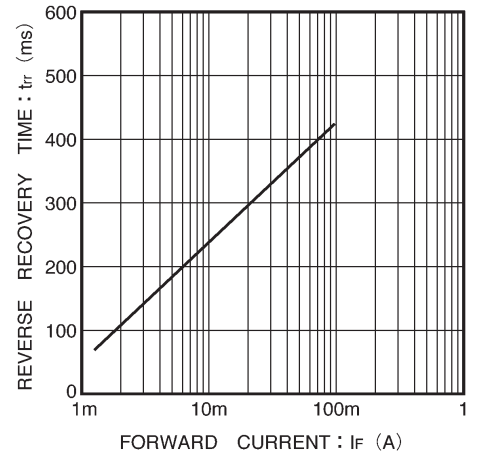


Fig. 3 Reverse recovery time characteristics

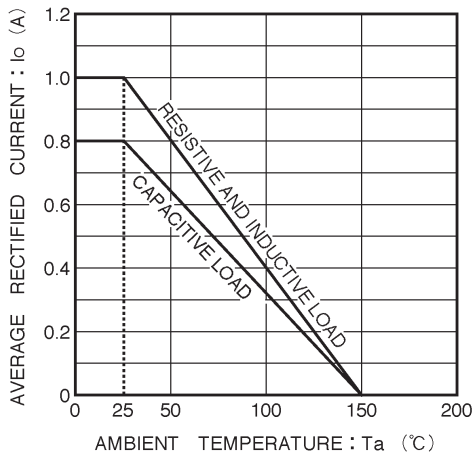


Fig. 4 Derating curve

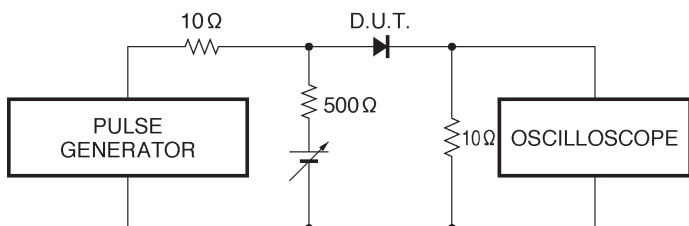


Fig. 5 Reverse recovery time (trr) measurement circuit