

Excellent Integrated System Limited

Stocking Distributor

Click to view price, real time Inventory, Delivery & Lifecycle Information:

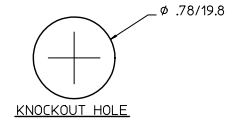
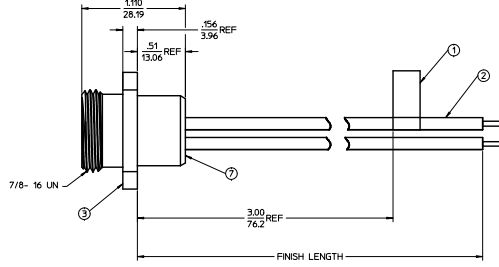
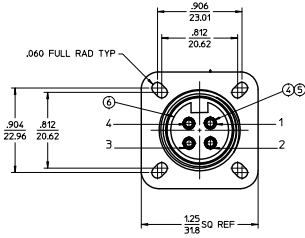
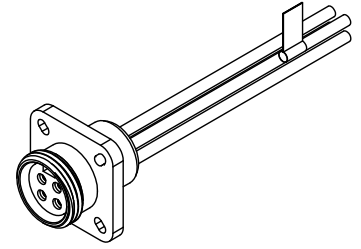
[Molex Connector Corporation](#)
[1300130402](#)

For any questions, you can email us directly:

sales@integrated-circuit.com

MATERIAL NUMBER	OLD PART NUMBER	FINISH LENGTH
130013-0402	1R4G04A20A120	1.0'+.75"-0 [.3M+19.1-0]
130013-0404	1R4G04A20F030	3.0'+1.75"-0 [.9M+44.5-0]
130013-0405	1R4G04A20F060	6.0'+2.19"-0 [1.8+55.6-0]

VOLTAGE RATING	600 VAC/VDC
AMPERAGE RATING	10A
PROJECTION	IP67
OPERATING TEMPERATURE	-20° C TO 105° C
UL CERTIFICATIONS	UL RECOGNIZED, FILE NO. E152210
CSA CERTIFICATIONS	CSA CERTIFIED, FILE NO. LR6837



WIRING DIAGRAM

- 1- BLACK
- 2- WHITE
- 3- RED
- 4- GREEN-YELLOW

ITEM.	QTY.	COMPONENT	MATERIAL	FINISH
1	1	FLAG LABEL	PLASTIC FILM	BLACK/YELLOW
2	4	CONDUCTOR-16 AWG, 26X#30 COPPER STRANDING 600V	PVC	SEE WIRING DIAGRAM
3	1	RECEPTACLE SHELL	ALUMINUM	ANODIZED
4	4	SOCKET SLEEVE	STAINLESS STEEL	
5	4	CONTACT SOCKET	COPPER ALLOY	GOLD PLATED
6	1	4 POLE INSERT	PVC	YELLOW
7	1	POTTING	EPOXY	BLACK

UPDATE DOC REC NO. WA2010-0423 DESIGNED BY: 2010/01/08 CHN: B. WOODMAN 2010/01/14 APPR: J. MURPHY 2010/01/14 CHECKED BY:	QUALITY SYMBOLS	GENERAL TOLERANCES (UNLESS SPECIFIED)	DIMENSION STYLE	SCALE	DESIGN UNITS	THIRD ANGLE PROJECTION
	4 PLACES ±.005	mm INCH	IN/MM	2:1	INCH	
	3 PLACES ±.010					
	2 PLACES ±.015					
	1 PLACE ±.025	ANGULAR ±1/2°	DRAWN BY: S. GARCIA 2009/10/10	CHECKED BY: B. WOODMAN 2009/10/10	TITLE: FEMALE FLANGED RECEPTACLE MINI-CHANGE 4P 16AWG PVC	
		DRAFT WHERE APPLICABLE MUST REMAIN WITHIN DIMENSIONS	APPROVED BY: J. MURPHY 2010/01/14	MATERIAL NO.	DOCUMENT NO.	SHEET NO.
			SEE CHART	SD-130013-008	1 OF 1	
			THIS DRAWING CONTAINS INFORMATION THAT IS PROPRIETARY TO MOLEX INCORPORATED AND SHOULD NOT BE USED WITHOUT WRITTEN PERMISSION			