

## Excellent Integrated System Limited

Stocking Distributor

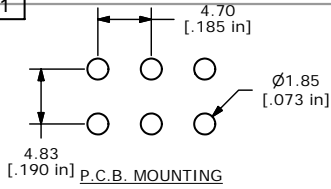
Click to view price, real time Inventory, Delivery & Lifecycle Information:

[E-Switch](#)  
[100DP4T5B1M51QEH](#)

For any questions, you can email us directly:

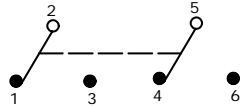
[sales@integrated-circuit.com](mailto:sales@integrated-circuit.com)

SHEET 1 OF 1



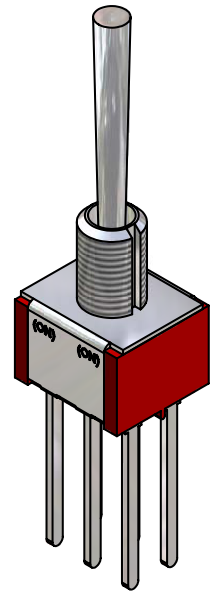
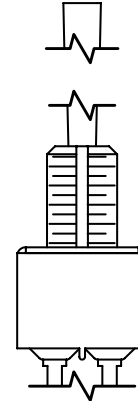
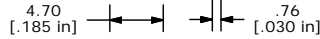
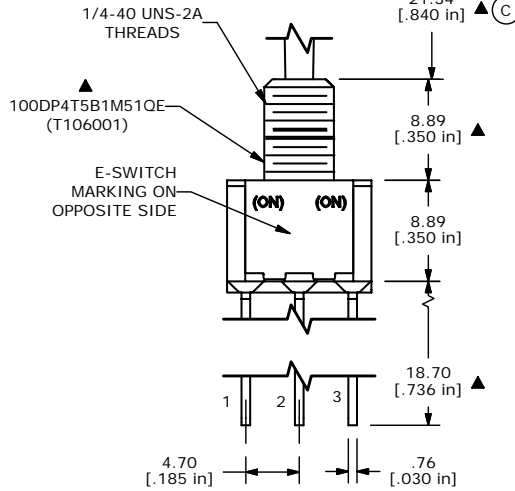
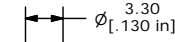
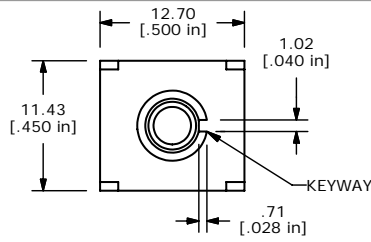
SWITCH FUNCTION		
POS. 1	POS. 2	POS. 3
(ON)	OFF (C)	(ON)
2-3, 5-6	OPEN	2-1, 5-4

(ON) = MOMENTARY



CIRCUIT: DPDT

- NOTE:
- ALL DIMENSIONS IN MM [INCH]
  - GENERAL TOLERANCE: X.X = ±0.4  
X.XX = ±0.25
  - TERMINAL NUMBERS FOR REF ONLY
  - PLATING MATERIAL: SILVER
  - RATING: 5 AMPS @ 120VAC OR 28VDC  
2 AMPS @ 250VAC
  - ELECTRIC LIFE: 40,000 make-and-break cycles at full load. (C)
  - INSULATION RESISTANCE: 1,000 Mega-ohm min.
  - DIELECTRIC STRENGTH: 1,000 V RMS @sea level.
  - OPERATING TEMP.: -30°C to 85°C
  - HARDWARE TO BE SHIPPED BULK  
T100000 - HEXNUT - QTY 2  
T100011 - LOCKWASHER - QTY 1  
T100015 - LOCKRING - QTY 1
  - ▲DENOTES CRITICAL PARAMETER.



ISOMETRIC

D	15233	DIM WAS 8.40 NOW 8.89	9/1/05	PH
C	15200	CHANGES NOTED WITH REV. (C)	8/24/05	PH
B	14977	CHANGED MODEL TEXT	6/3/05	JB
A	14889	RELEASED FOR PRODUCTION	5/6/05	JB
REV	PCR NO	DESCRIPTION	DATE	BY

THE INFORMATION CONTAINED IN THIS DOCUMENT IS PROPRIETARY TO E-SWITCH AND IS NOT TO BE COPIED OR TRANSFERRED

**E-SWITCH®**

TITLE 100DP4T5B1M51QE

SCALE	DATE	DR	DWG	REV
2:1	5/6/2005	JB	ST106001	D