

## Excellent Integrated System Limited

Stocking Distributor

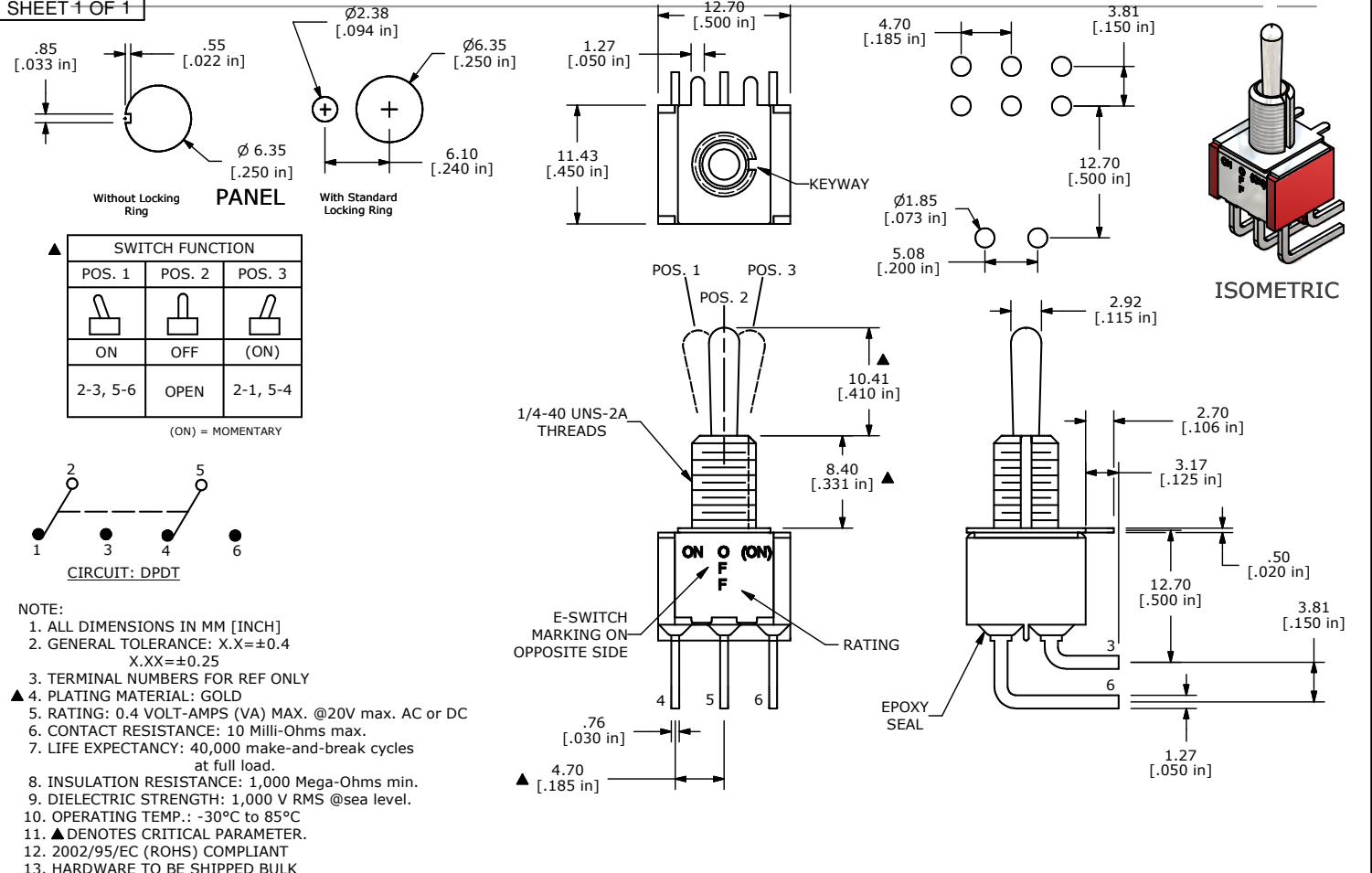
Click to view price, real time Inventory, Delivery & Lifecycle Information:

[E-Switch](#)  
[100DP5T1B1M6REH](#)

For any questions, you can email us directly:

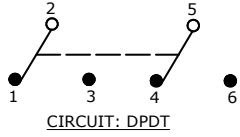
[sales@integrated-circuit.com](mailto:sales@integrated-circuit.com)

SHEET 1 OF 1



SWITCH FUNCTION		
POS. 1	POS. 2	POS. 3
ON	OFF	(ON)
2-3, 5-6	OPEN	2-1, 5-4

(ON) = MOMENTARY



- NOTE:
1. ALL DIMENSIONS IN MM [INCH]
  2. GENERAL TOLERANCE: X.X=±0.4 X.XX=±0.25
  3. TERMINAL NUMBERS FOR REF ONLY
  - ▲ 4. PLATING MATERIAL: GOLD
  5. RATING: 0.4 VOLT-AMPS (VA) MAX. @20V max. AC or DC
  6. CONTACT RESISTANCE: 10 Milli-Ohms max.
  7. LIFE EXPECTANCY: 40,000 make-and-break cycles at full load.
  8. INSULATION RESISTANCE: 1,000 Mega-Ohms min.
  9. DIELECTRIC STRENGTH: 1,000 V RMS @sea level.
  10. OPERATING TEMP.: -30°C to 85°C
  11. ▲ DENOTES CRITICAL PARAMETER.
  12. 2002/95/EC (ROHS) COMPLIANT
  13. HARDWARE TO BE SHIPPED BULK  
 T100000 - HEXNUT - QTY 2  
 T100011 - LOCKWASHER - QTY 1  
 T100015 - LOCKRING - QTY 1

TITLE 100DP5T1B1M6REH			
SCALE 2:1	DATE 9/9/2009	DR BLR	DWG ST125015
		REV A	

A	18627	RELEASED FOR PRODUCTION	9/9/09	BLR
REV	PCR NO	DESCRIPTION	DATE	BY

THE INFORMATION CONTAINED IN THIS DOCUMENT IS PROPRIETARY TO E-SWITCH AND IS NOT TO BE COPIED OR TRANSFERRED