

Excellent Integrated System Limited

Stocking Distributor

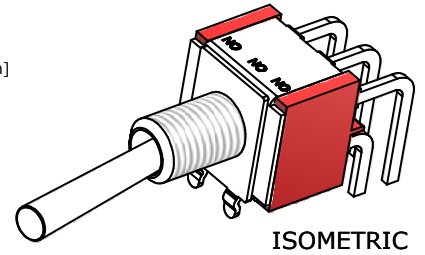
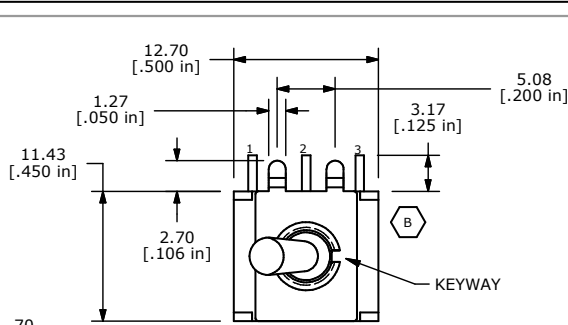
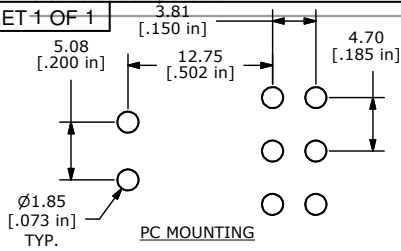
Click to view price, real time Inventory, Delivery & Lifecycle Information:

[E-Switch](#)
[100DP6T4B8M61QEH](#)

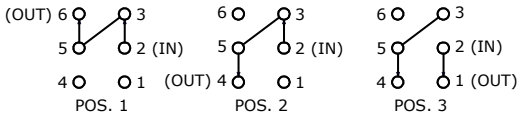
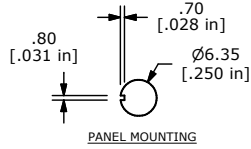
For any questions, you can email us directly:

sales@integrated-circuit.com

SHEET 1 OF 1

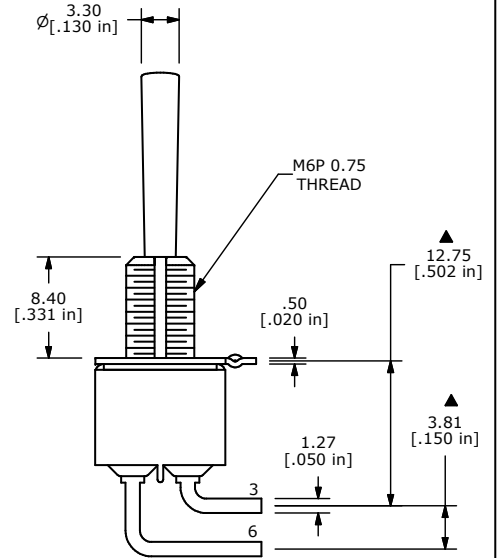
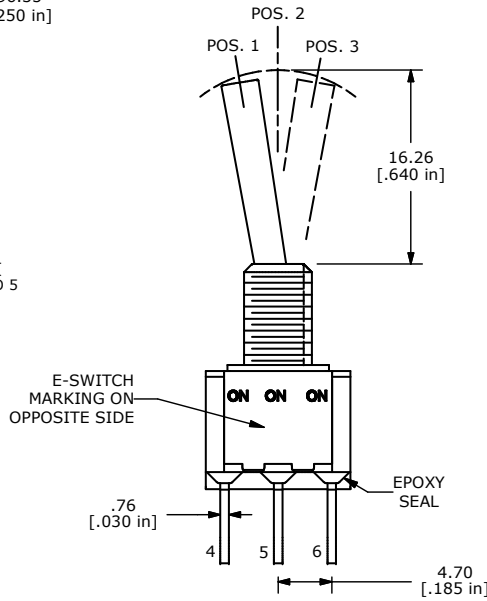


SWITCH FUNCTION		
POS. 1	POS. 2	POS. 3
ON	ON	ON
2-3, 5-6	2-3, 5-4	2-1, 5-4



DPDT 3 WAY CIRCUIT
 NOTE: JUMPER PIN 3 TO 5

- NOTE:
1. ALL DIMENSIONS IN MM [INCH]
 2. GENERAL TOLERANCE: X.X=±0.4
X.XX=±0.25
 3. TERMINAL NUMBERS FOR REF ONLY
 - ▲ 4. PLATING MATERIAL: SILVER
 - ▲ 5. RATING: 5A MAX. @ 120VAC (or 28VDC)
2A MAX. @ 250VAC
 6. LIFE EXPECTANCY: 40,000 make-and-break cycles at full load.
 7. INSULATION RESISTANCE: 1,000 Mega-ohm min.
 8. DIELECTRIC STRENGTH: 1,000 V RMS @sea level.
 9. OPERATING TEMP.: -30°C to 85°C
 10. ▲ DENOTES CRITICAL PARAMETER.
 11. 2002/95/EC (ROHS) COMPLIANT
 12. HARDWARE TO BE SHIPPED BULK
T100005 - HEXNUT - QTY 2
T100011 - LOCKWASHER - QTY 1
▲T100023 - LOCKRING - QTY 1



B	18419	SHOW LEG OFFSETS IN VIEW	2/24/09	BLR
A	18346	RELEASE FOR PRODUCTION	1/30/09	BLR
REV	PCR NO	DESCRIPTION	DATE	BY

THE INFORMATION CONTAINED IN THIS DOCUMENT IS PROPRIETARY TO E-SWITCH AND IS NOT TO BE COPIED OR TRANSFERRED

TITLE 100DP6T4B8M61QE				
SCALE 2:1	DATE 2/24/2009	DR BLR	DWG ST126011	REV B