

Excellent Integrated System Limited

Stocking Distributor

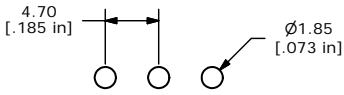
Click to view price, real time Inventory, Delivery & Lifecycle Information:

[E-Switch](#)
[100SP4T8B13M51REH](#)

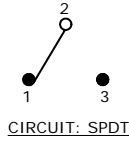
For any questions, you can email us directly:

sales@integrated-circuit.com

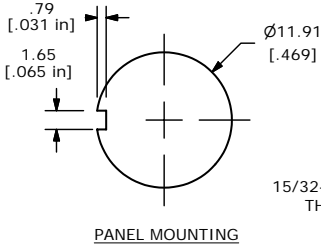
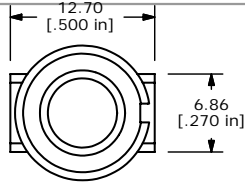
SHEET 1 OF 1



P.C. MOUNTING



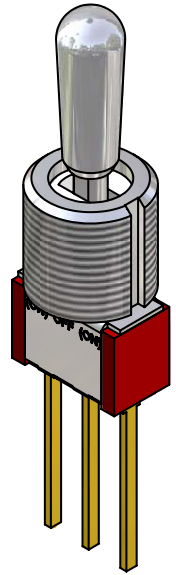
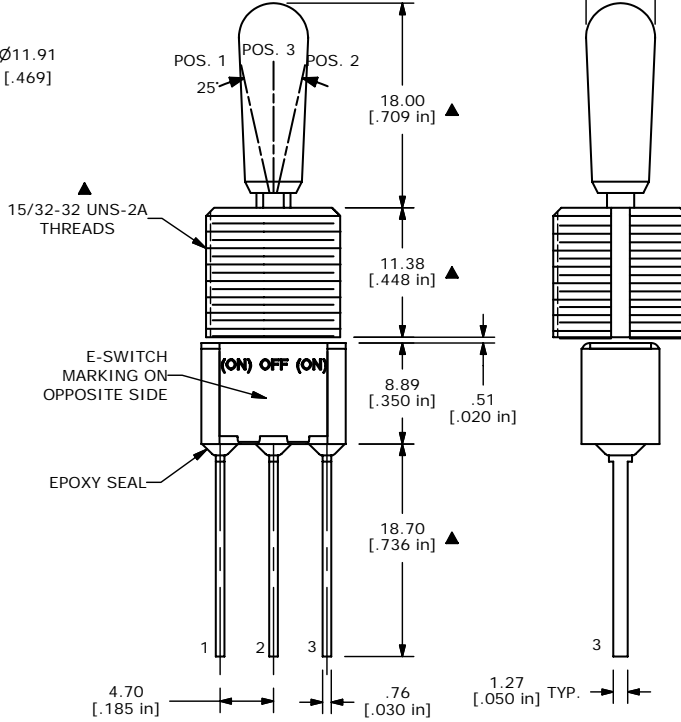
CIRCUIT: SPDT



PANEL MOUNTING

SWITCH FUNCTION		
POS. 1	POS. 1	POS. 1
(ON)	OFF	(ON)
2-3	OPEN	2-1

(ON)=MOMENTARY



ISOMETRIC

NOTE:

1. ALL DIMENSIONS IN MM [INCH]
2. GENERAL TOLERANCE: X.X=±0.4
X.XX=±0.25
3. TERMINAL NUMBERS FOR REF ONLY
- ▲ 4. PLATING MATERIAL: GOLD
5. RATING: 0.4 (VA) Max. @20V Max.
6. ELECTRIC LIFE: 40,000 make-and-break cycles at full load.
7. INSULATION RESISTANCE: 1,000 Mega-ohm min.
8. DIELECTRIC STRENGTH: 1,000 V RMS @sea level.
9. OPERATING TEMP.: -30°C to 85°C
10. ▲ DENOTES CRITICAL PARAMETER.
11. 2002/95/EC (ROHS) COMPLIANT
- ▲ 12. HARDWARE TO SHIP BULK:
 T100012 - LOCK WASHER, QTY 1
 T100003 - LOCK RING, QTY 1
 T100004 - HEX NUT, QTY 2



TITLE 100SP4T8B13M51REH

A	16166	RELEASED FOR PRODUCTION	6/20/06	CT
REV	PCR NO	DESCRIPTION	DATE	BY

THE INFORMATION CONTAINED IN THIS DOCUMENT IS PROPRIETARY TO E-SWITCH AND IS NOT TO BE COPIED OR TRANSFERRED

SCALE 2:1	DATE 6/20/2006	DR CT	DWG ST114042	REV A
-----------	----------------	-------	--------------	-------