

Excellent Integrated System Limited

Stocking Distributor

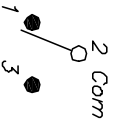
Click to view price, real time Inventory, Delivery & Lifecycle Information:

[E-Switch](#)
[200MSP3T3B3M6QE](#)

For any questions, you can email us directly:

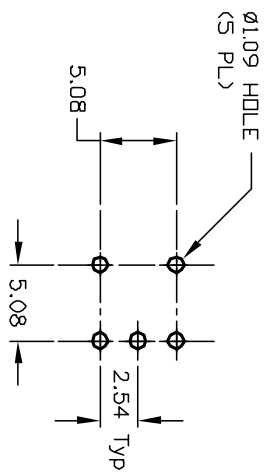
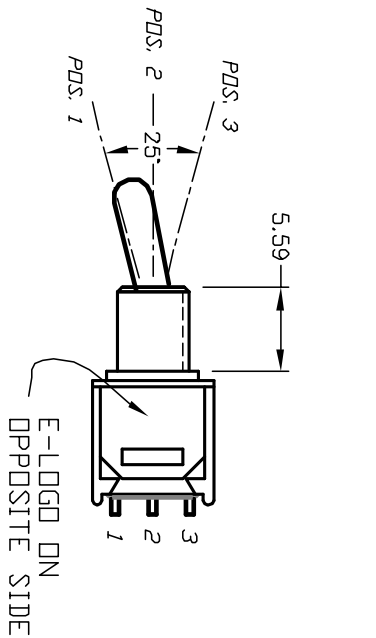
sales@integrated-circuit.com

SHEET OF

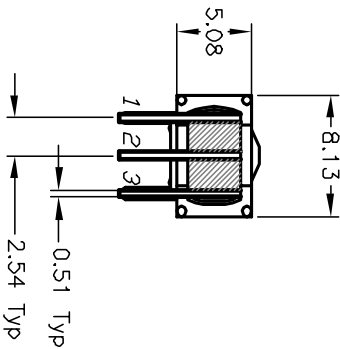
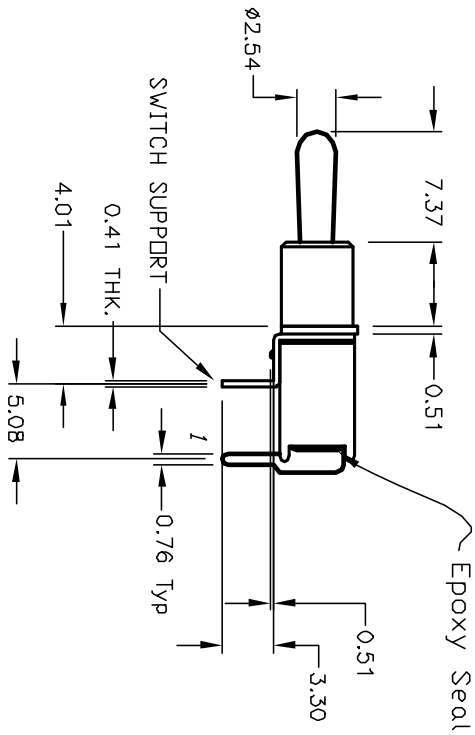
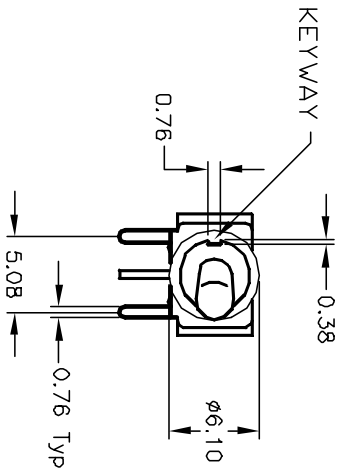


CIRCUIT: SPDT

SWITCH FUNCTION			
PDS. 1	PDS. 2	PDS. 3	
DN	DN	DN	
2-3	OPEN	2-1	



RECOMMENDED P.C.B. LAYOUT



NOTES:

1. ALL DIMENSIONS IN MM
2. GENERAL TOLERANCE: X.X=±0.4
X.XX=±0.25
3. TERM. NOS. FOR REF. ONLY
4. CONTACT RATING: 3A@ 120VAC or 28VDC;
1A@ 250VAC
5. FIXED TERMINAL & MOVING CONTACT:
Copper Alloy w/Silver plate
at full load.
6. ELECTRIC LIFE: 30,000 make-and-break cycles
7. INSULATION RESISTANCE: 1,000 M ohm min.
8. DIELECTRIC STRENGTH: 1,000 V RMS @sec level.
9. OPERATING TEMP.: -30°C to 85°C

REV.	ECN No.	DESCRIPTION	DATE	CHKD
A	12325	REVISED AND REDRAWN	10/22/02	CJB

TITLE	SCALE	DATE	DR	DWG	REV
200 MSP-3 T3 B3 M6 Q E	2:1	7/23/02	CJB	T213019	A

E-SWITCH®

THE INFORMATION CONTAINED IN THIS DOCUMENT
 IS PROPRIETARY TO E-SWITCH AND IS
 NOT TO BE COPIED OR TRANSMITTED