

## Excellent Integrated System Limited

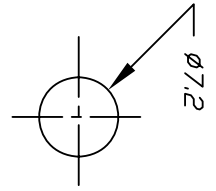
Stocking Distributor

Click to view price, real time Inventory, Delivery & Lifecycle Information:

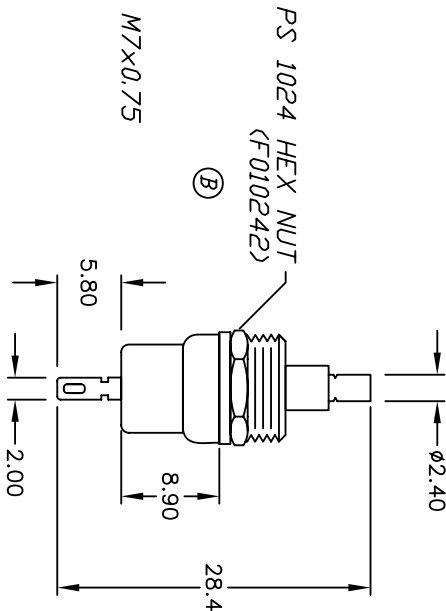
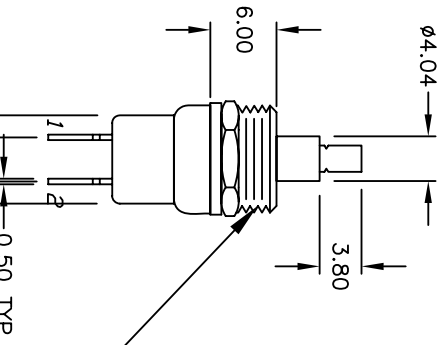
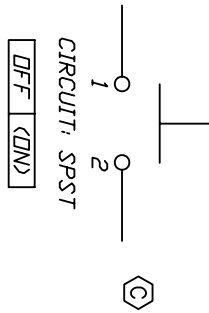
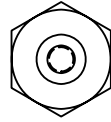
[E-Switch](#)  
[PS1024ANOCAP](#)

For any questions, you can email us directly:

[sales@integrated-circuit.com](mailto:sales@integrated-circuit.com)



RECOMMENDED PANEL LAYOUT



- NOTES:
1. ALL DIMENSIONS IN MM
  2. GENERAL TOLERANCE: X.X=±0.4  
X.XX=±0.25
  3. TERMINAL NO'S FOR REFERENCE ONLY
  4. RATING: 3A@ 125VAC; 1.5A @250VAC
  5. CONTACT RESISTANCE:  
50mILLI-OHMS max.
  6. INSULATION RESISTANCE:  
500V 100Mega-ohms min.
  7. DIELECTRIC STRENGTH:  
1000V 1minute

C	14259	CORRECT CIRCUIT DIAGRAM	8/24/04	AR
B	12574	ADD COMPONENT	11/18/02	CJB
A	12105	RELEASED FOR PRODUCTION	5/1/02	CJB
REV.	ECN No.	DESCRIPTION	DATE	CHKD

TITLE		DATE		DR	DWG	REV
PS 1024A (w/no cap)		5/1/02		CJB	F010244	C
SCALE	DATE		DR	DWG	REV	
1.5:1	5/1/02		CJB	F010244	C	

**E-SWITCH®**

THE INFORMATION CONTAINED IN THIS DOCUMENT IS PROPRIETARY TO E-SWITCH AND IS NOT TO BE COPIED OR TRANSFERRED