

Excellent Integrated System Limited

Stocking Distributor

Click to view price, real time Inventory, Delivery & Lifecycle Information:

[E-Switch](#)
[TL3210AF160BRQ](#)

For any questions, you can email us directly:

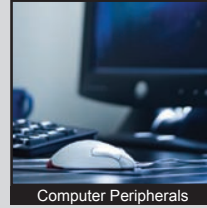
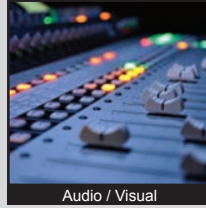
sales@integrated-circuit.com

TL3210 SERIES TACT SWITCH

- ANTI-VANDAL SWITCHES
- DETECTOR SWITCHES
- DIP SWITCHES
- KEYLOCK SWITCHES
- NAVIGATION SWITCHES
- PUSHBUTTON SWITCHES
- ROCKER SWITCHES
- ROTARY SWITCHES
- SLIDE SWITCHES
- SNAP ACTION SWITCHES
- TACTILE SWITCHES
- TOGGLE SWITCHES
- CAP OPTIONS



APPLICATIONS / MARKETS



RoHS

SPECIFICATIONS

Electrical Rating: 50mA @ 12VDC
Life Expectancy: 100,000 Cycles
Contact Resistance: 500mΩ Max.
Insulation Resistance: 100 MΩ Min. at 100VDC
Dielectric Strength: 250VAC for 1 min.
Operating Temperature: -20°C to 70°C
Storage Temperature: -30°C to 80°C
Operating Force: 160 gf +/- 50 gf
Travel: 0.2mm +/- 0.1mm
Contact Arrangement: SPST, Normally Open

FEATURES & BENEFITS

- Illumination options
- Tape & Reel packaging: 2000 pieces per reel
- Miniature size: 5.6mm x 3.5mm
- Surface Mount Design

PART NUMBER CONFIGURATOR

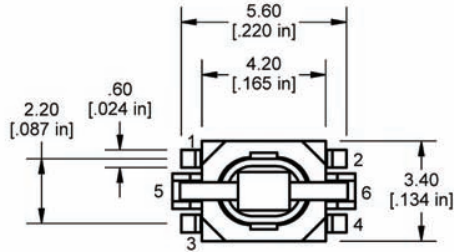
| Series | Model | Actuator | Force | LED | Contact Material |
|--------|-------|----------|-------|--|------------------|
| TL | 3210 | A | F160 | B - Blue G - Green R - Red Y - Yellow W - White X - Red/Green Bi-color Z - Green/Yellow Bi-color | Q - Silver |

Specifications subject to change without notice

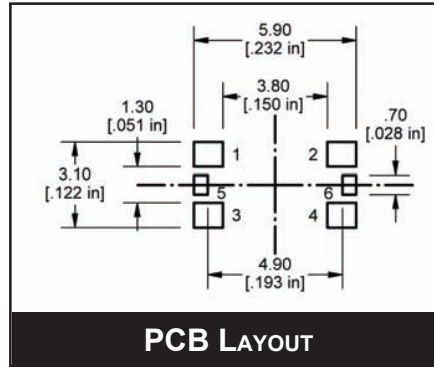
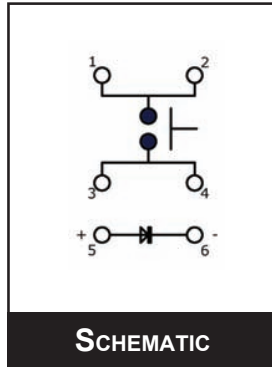
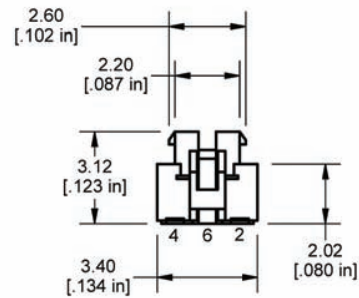
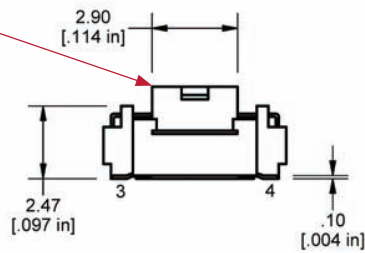


TL3210 SERIES TACT SWITCH

BODY DIMENSIONS



This surface taped for automated pickup: Remove tape after soldering



| LED Specifications | | | |
|-----------------------|-----------------------------|---|----------------------------------|
| | Forward Current (mA) | Forward Voltage V @ 20mA | Luminous Intensity (mcd) |
| Blue | 20mA | 3.8 min - 3.3 typ. VDC | 80 mcd |
| Red | 20mA | 1.95 typ. - 2.5 max VDC | 230 mcd |
| Green | 20mA | 2.1 typ. - 2.5 max VDC | 50 mcd |
| Yellow | 20mA | 2.0 typ. - 2.5 max VDC | 160 mcd |
| White | 20mA | 3.3 typ. - 4.0 max. VDC | 300 mcd |
| Red/Green Bi-color | Red: 20mA Green: 20mA | Red: 1.95 typ - 2.5 max VDC Green: 3.3 typ. - 4.1 max. VDC | Red: 220 mcd Green: 200 mcd |
| Yellow/Green Bi-Color | Yellow: 20mA Green: 20mA | Yellow: 2.0 typ. - 2.5 max VDC Green: 2.1 typ. - 2.5 max VDC | Yellow: 180 mcd Green: 60 mcd |