

## Excellent Integrated System Limited

Stocking Distributor

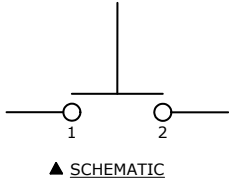
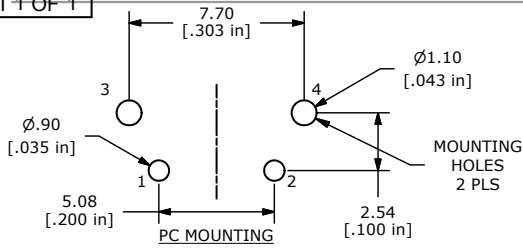
Click to view price, real time Inventory, Delivery & Lifecycle Information:

[E-Switch](#)  
[TL6110AF300QP](#)

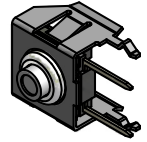
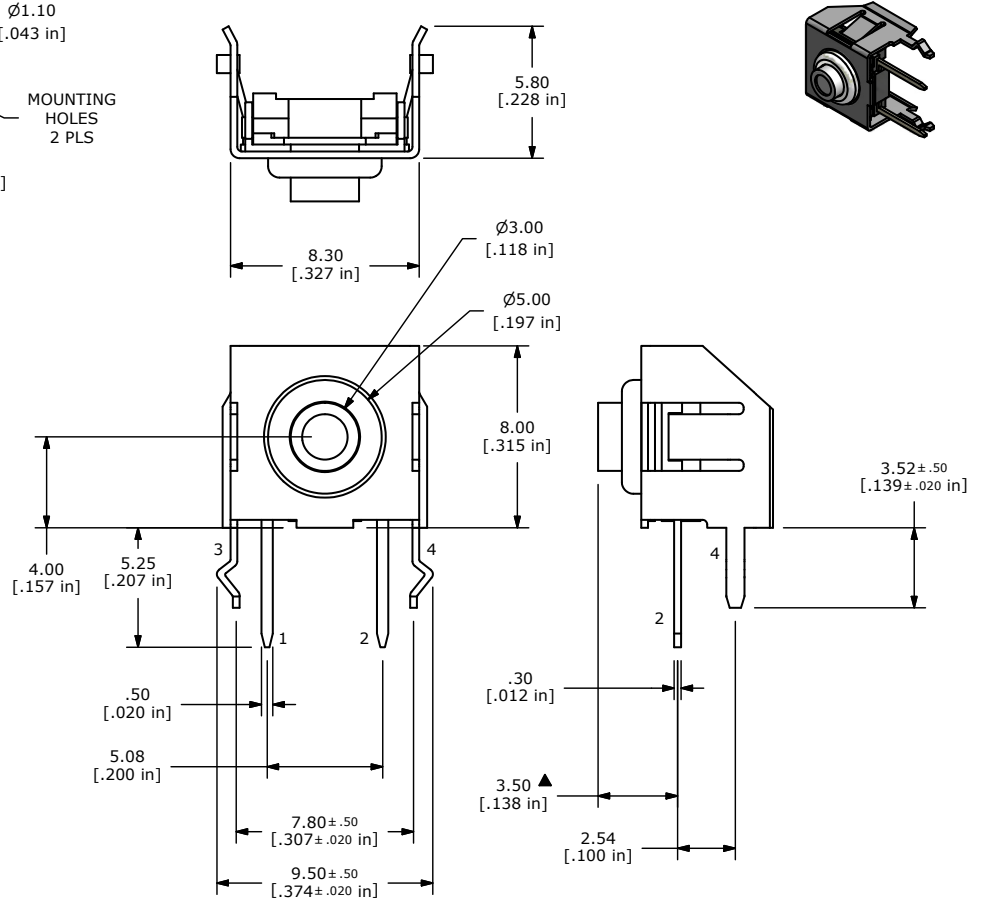
For any questions, you can email us directly:

[sales@integrated-circuit.com](mailto:sales@integrated-circuit.com)

SHEET 1 OF 1



- NOTES
1. ALL DIMENSIONS IN MM [INCH]
  2. GENERAL TOLERANCE: X.X=±0.4  
X.XX=±0.25
  3. TERMINAL NUMBERS FOR REF. ONLY.
  - ▲ 4. OPERATING FORCE: 300±50gf
  5. OPERATING LIFE: 500,000 CYCLES
  6. TRAVEL: 0.5±0.15mm
  7. CONTACT RATING: 12VDC @ 50mA
  8. CONTACT RESISTANCE: 100m Ω MAX
  9. INSULATION RESISTANCE: 100M Ω MIN @ 100VDC.
  - ▲ 10. CONTACT MATERIAL: SILVER
  11. OPERATING TEMPERATURE: -40°C TO 85°C
  12. PACKAGING: TUBE 52 PCS. PER TUBE
  13. ▲ DENOTES CRITICAL PARAMETER
  14. 2002/95/EC (ROHS) COMPLIANT



TITLE TL6110AF300QP

A	21167	New Release	6/18/13	rc
REV	PCR NO	DESCRIPTION	DATE	BY

THE INFORMATION CONTAINED IN THIS DOCUMENT IS PROPRIETARY TO E-SWITCH AND IS NOT TO BE COPIED OR TRANSFERRED

SCALE	DATE	DR	DWG	REV
	6/18/2013	rc	T351013	A