

## Excellent Integrated System Limited

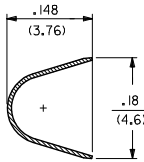
Stocking Distributor

Click to view price, real time Inventory, Delivery & Lifecycle Information:

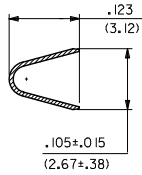
[Molex Connector Corporation](#)  
[0002072101](#)

For any questions, you can email us directly:

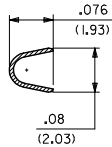
[sales@integrated-circuit.com](mailto:sales@integrated-circuit.com)



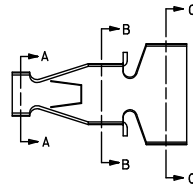
SECTION C-C



SECTION B-B

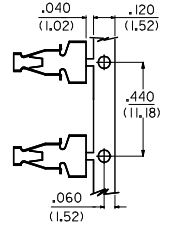


SECTION A-A



NOTES:

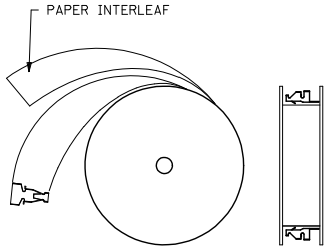
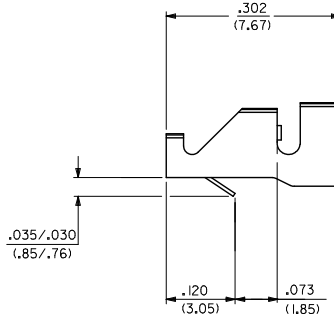
1. MATERIAL: 260 BRASS .008 THK
2. TERMINAL 4706-(\*\*\*\*)\* ACCEPTS 16 TO 18 AWG WIRE WITH INSULATION DIA OF .120 MAX
3. TERMINALS CONFORM TO SOLDERABILITY SPEC 152
4. PRODUCT SPECIFICATION: PS-4706-001



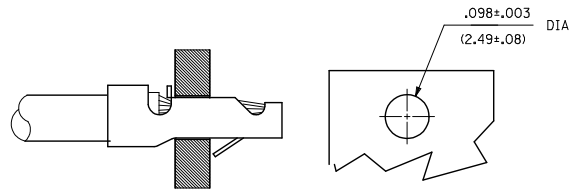
CARRIER DETAIL

4706-\*(\*\*\*\*)\*  
BLANK=SEE SHT 1  
3=SEE SHEET 2  
FORM  
BLANK=CHAIN  
L=LOOSE  
PLATING PER SDES-88  
\*(P909) OVERALL HOT TIN DIP: 2.54 MICROMETERS MIN

\*THE PRIMARY SHIPPING CARTON WILL BE LABELED 'COMPLIANT TO ROHS DIRECTIVE 2002/95/EC AND ELV ANNEX II OF DIRECTIVE 2000/53/EC.' CARTONS WITHOUT THIS LABEL MAY CONTAIN PRODUCT WITH TIN-LEAD PLATING.



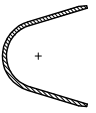
WINDING SPEC



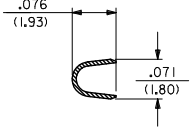
RECOMMENDED PC BOARD

4706-(****)*	
EDP NO.	ENG NO
02-09-2105	4706-(P909)
- -	- ( )
- -	- ( )

CHANGE TO ME10 EC NO: UCP2005-0966 DRAWN BY: 2001/11/19 CHKD: SAMIEC 2006/04/09 APPL: MARGULIS 2006/04/09 J1	QUALITY SYMBOLS ▽=0 ∇=0	GENERAL TOLERANCES (UNLESS SPECIFIED)		DIMENSION STYLE .0625 INCH IN/MM		DESIGN UNITS INCH	THIRD ANGLE PROJECTION
		4 PLACES ± --- ± ---	DRAWN BY SAMIEC DATE 02/25/92	TITLE STRAIN RELIEF TERMINAL			
		3 PLACES ± --- ± .010	CHECKED BY PATEL DATE 02/25/92	MOLEX INCORPORATED			
		2 PLACES ± 0.25 ± .014 1 PLACE ± 0.36 ± --- ANGULAR ± 1/2°	APPROVED BY LENZ DATE 02/25/92	MATERIAL NO. SEE CHART SIZE C	DOCUMENT NO. SD-4706	SHEET NO. 1 OF 2	
DRAFT WHERE APPLICABLE MUST REMAIN WITHIN DIMENSIONS				THIS DRAWING CONTAINS INFORMATION THAT IS PROPRIETARY TO MOLEX INCORPORATED AND SHOULD NOT BE USED WITHOUT WRITTEN PERMISSION			



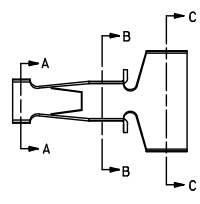
SECTION C-C



SECTION B-B

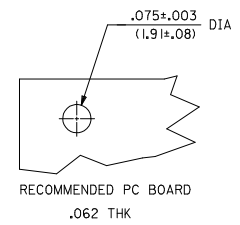
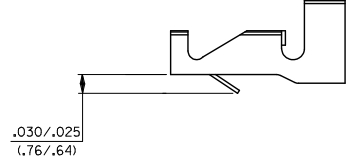


SECTION A-A



NOTES:

1. THIS PART IS THE SAME AS SHEET 1 EXCEPT AS SHOWN
  2. MATERIAL: 260 BRASS .006 THK
  3. FINISH: (909) \* OVERALL HOT TIN DIP: 2.54 MICROMETERS MIN.
  4. TERMINAL 4706-3(\*\*\*)\* ACCEPTS 18 TO 24 AWG WIRE WITH INSULATION DIA OF .120 MAX
- \*THE PRIMARY SHIPPING CARTON WILL BE LABELED 'COMPLIANT TO ROHS DIRECTIVE 2002/95/EC AND ELV ANNEX II OF DIRECTIVE 2000/53/EC.' CARTONS WITHOUT THIS LABEL MAY CONTAIN PRODUCT WITH TIN-LEAD PLATING.



4706-3(***)*			
EDP NO.	ENG NO.		
02-07-2101	4706-3(P909)		

CHANGE TO ME10 EC NO: 2004/11/08 DRAWN BY: SAMIEC CHKD: SAMIEC APPR: MARGULIS 2004/11/08 J1	QUALITY SYMBOLS ▽=0 ▽=0	GENERAL TOLERANCES (UNLESS SPECIFIED)		DIMENSION STYLE		SCALE	DESIGN UNITS	THIRD ANGLE PROJECTION	
			mm	INCH	IN/MM	---	INCH		
		4 PLACES	±---	±---	DRAWN BY	DATE	TITLE		
		3 PLACES	±---	±.010	CHECKED BY	DATE	STRAIN RELIEF TERMINAL		
2 PLACES	±0.25	±.014	APPROVED BY	DATE	MOLEX INCORPORATED				
1 PLACE	±0.36	±---	LENZ	02/25/92	MATERIAL NO. SEE CHART				
ANGULAR ±1/2°		DRAFT WHERE APPLICABLE MUST REMAIN WITHIN DIMENSIONS		MATERIAL NO. SEE CHART		DOCUMENT NO. SD-4706		SHEET NO. 2	
SIZE C THIS DRAWING CONTAINS INFORMATION THAT IS PROPRIETARY TO MOLEX INCORPORATED AND SHOULD NOT BE USED WITHOUT WRITTEN PERMISSION									