

Excellent Integrated System Limited

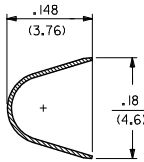
Stocking Distributor

Click to view price, real time Inventory, Delivery & Lifecycle Information:

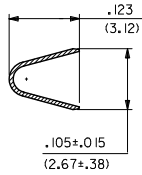
[Molex Connector Corporation](#)
[0002092105](#)

For any questions, you can email us directly:

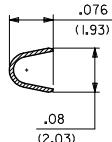
sales@integrated-circuit.com



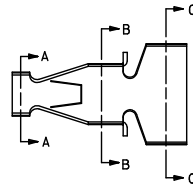
SECTION C-C



SECTION B-B

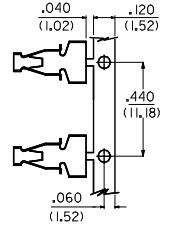


SECTION A-A



NOTES:

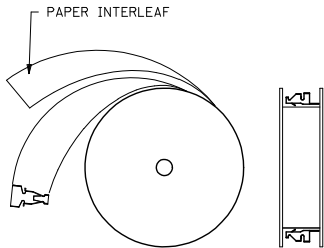
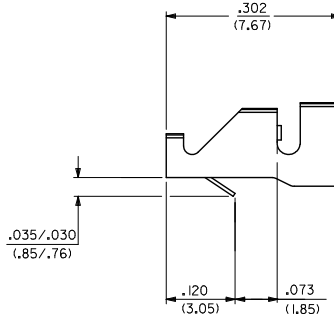
1. MATERIAL: 260 BRASS .008 THK
2. TERMINAL 4706-(****)* ACCEPTS 16 TO 18 AWG WIRE WITH INSULATION DIA OF .120 MAX
3. TERMINALS CONFORM TO SOLDERABILITY SPEC 152
4. PRODUCT SPECIFICATION: PS-4706-001



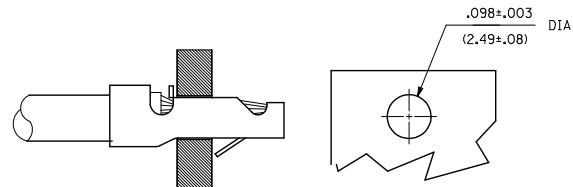
CARRIER DETAIL

4706-*(****)*
 BLANK=SEE SHT 1
 3=SEE SHEET 2
 PLATING PER SDES-88
 * (P909) OVERALL HOT TIN DIP: 2.54 MICROMETERS MIN

*THE PRIMARY SHIPPING CARTON WILL BE LABELED 'COMPLIANT TO ROHS DIRECTIVE 2002/95/EC AND ELV ANNEX II OF DIRECTIVE 2000/53/EC.' CARTONS WITHOUT THIS LABEL MAY CONTAIN PRODUCT WITH TIN-LEAD PLATING.



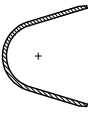
WINDING SPEC



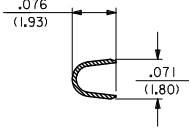
RECOMMENDED PC BOARD

4706-(****)*	
EDP NO.	ENG NO
02-09-2105	4706-(P909)
-	- ()
-	- ()

CHANGE TO ME10 EC NO: UCP2005-0966 DRAWN BY: DRW:RAJATNOL 2004/11/19 CHKD: SAMIEC 2006/04/09 APPR: MARGULIS 2006/04/09 J1	QUALITY SYMBOLS ▽=0 ∇=0	GENERAL TOLERANCES (UNLESS SPECIFIED)		DIMENSION STYLE .0625 INCH IN/MM		DESIGN UNITS INCH	THIRD ANGLE PROJECTION	
		4 PLACES ± .010	± .010	DRAWN BY SAMIEC	DATE 02/25/92	TITLE STRAIN RELIEF TERMINAL MOLEX INCORPORATED		
		3 PLACES ± .010	± .010	CHECKED BY PATEL	DATE 02/25/92			
		2 PLACES ± 0.25	± .014	APPROVED BY LENZ	DATE 02/25/92	MATERIAL NO. SEE CHART	DOCUMENT NO. SD-4706	SHEET NO. 1 OF 2
1 PLACE ± 0.36	± .014	ANGULAR ± 1/2°		DRAFT WHERE APPLICABLE MUST REMAIN WITHIN DIMENSIONS				



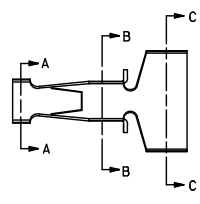
SECTION C-C



SECTION B-B

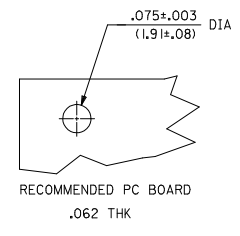
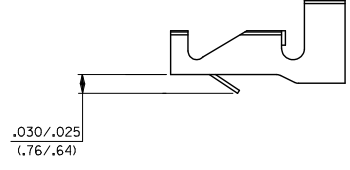


SECTION A-A



NOTES:

1. THIS PART IS THE SAME AS SHEET 1 EXCEPT AS SHOWN
 2. MATERIAL: 260 BRASS .006 THK
 3. FINISH: (909) * OVERALL HOT TIN DIP: 2.54 MICROMETERS MIN.
 4. TERMINAL 4706-3(***)* ACCEPTS 18 TO 24 AWG WIRE WITH INSULATION DIA OF .120 MAX
- *THE PRIMARY SHIPPING CARTON WILL BE LABELED 'COMPLIANT TO ROHS DIRECTIVE 2002/95/EC AND ELV ANNEX II OF DIRECTIVE 2000/53/EC.' CARTONS WITHOUT THIS LABEL MAY CONTAIN PRODUCT WITH TIN-LEAD PLATING.



4706-3(***)*			
EDP NO.	ENG NO.		
02-07-2101	4706-3(P909)		

CHANGE TO ME10 EC NO: 2004/11/08 DRAWN BY: SAMIEC CHKD: SAMIEC APPR: MARGULIS 2004/11/08 REV J1	QUALITY SYMBOLS ▽=0 ▽=0	GENERAL TOLERANCES (UNLESS SPECIFIED)		DIMENSION STYLE		SCALE	DESIGN UNITS	THIRD ANGLE PROJECTION	
			mm	INCH	IN/MM	---	INCH		
		4 PLACES	±---	±---	DRAWN BY	DATE	TITLE		
		3 PLACES	±---	±.010	SAMIEC	02/25/92	STRAIN RELIEF TERMINAL		
	2 PLACES	±0.25	±.014	CHECKED BY	DATE	MOLEX INCORPORATED			
	1 PLACE	±0.36	±---	PATEL	02/25/92	SD-4706			
	ANGULAR ±1/2°		APPROVED BY		DATE	SHEET NO.			
			LENZ		02/25/92	2			
DRAFT WHERE APPLICABLE MUST REMAIN WITHIN DIMENSIONS		MATERIAL NO.		SEE CHART		DOCUMENT NO.			
						SD-4706			
SIZE C THIS DRAWING CONTAINS INFORMATION THAT IS PROPRIETARY TO MOLEX INCORPORATED AND SHOULD NOT BE USED WITHOUT WRITTEN PERMISSION									