

## Excellent Integrated System Limited

Stocking Distributor

Click to view price, real time Inventory, Delivery & Lifecycle Information:

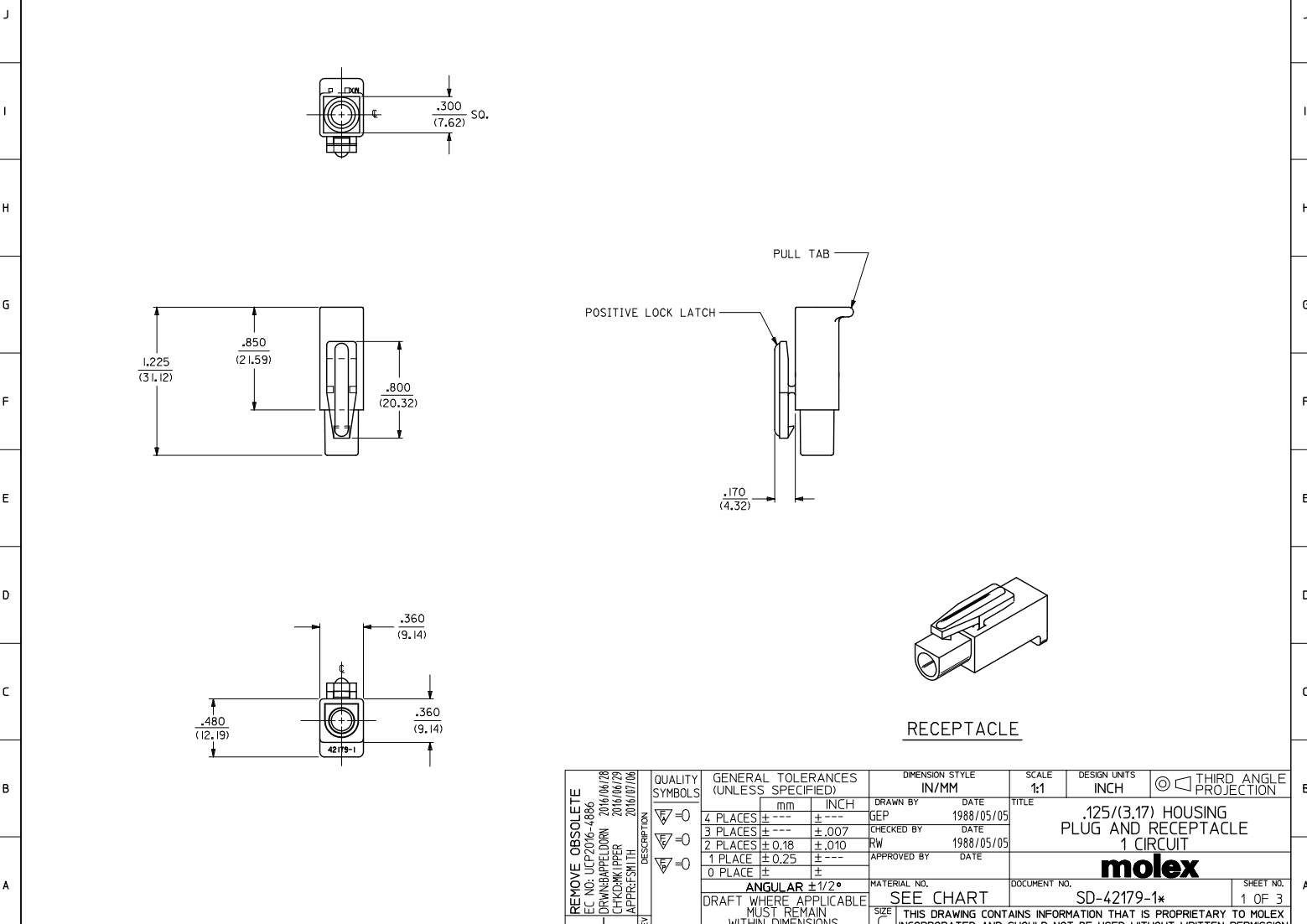
[Molex Connector Corporation](#)

[03-12-1016](#)

For any questions, you can email us directly:

[sales@integrated-circuit.com](mailto:sales@integrated-circuit.com)

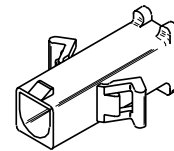
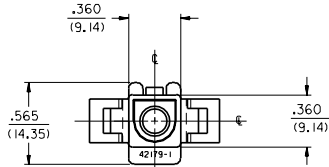
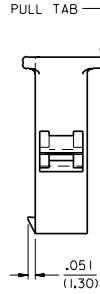
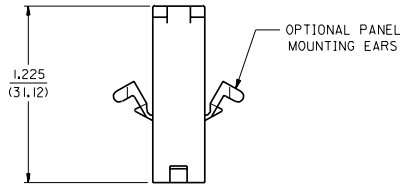
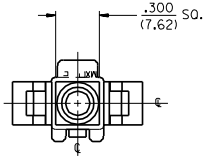
13 12 11 10 9 8 7 6 5 4 3 2 1



REMOVE OBSOLETE EC NO: UCP2016-4886 DRAWN BY: DRWBAFFELDRN 2016/06/28 CHECKED BY: CHKOKKIPER 2016/06/29 APPROVED BY: APPRCSMTTH 2016/07/06	QUALITY SYMBOLS ▽=0 ▽=0 ▽=0	GENERAL TOLERANCES (UNLESS SPECIFIED)		DIMENSION STYLE	SCALE	DESIGN UNITS	THIRD ANGLE PROJECTION	
		mm	INCH	IN/MM	1:1	INCH		
		4 PLACES ± --- ± ---		DRAWN BY	DATE	TITLE		
		3 PLACES ± --- ± .007		GEP	1988/05/05	.125/(3.17) HOUSING PLUG AND RECEPTACLE 1 CIRCUIT		
		2 PLACES ± 0.18 ± .010		CHECKED BY	DATE	<b>molex</b>		
		1 PLACE ± 0.25 ± ---		RW	1988/05/05			
		0 PLACE ± ±		APPROVED BY	DATE			
		ANGULAR ± 1/2°		MATERIAL NO.	DOCUMENT NO.	SHEET NO.		
DRAFT WHERE APPLICABLE MUST REMAIN WITHIN DIMENSIONS		SEE CHART		SD-42179-1*		1 OF 3		
THIS DRAWING CONTAINS INFORMATION THAT IS PROPRIETARY TO MOLEX INCORPORATED AND SHOULD NOT BE USED WITHOUT WRITTEN PERMISSION								

1b\_frame\_C\_P\_ME\_T Rev. G 2012/01/11 12 11 10 9 8 7 6 5 4 3 2 1

13 12 11 10 9 8 7 6 5 4 3 2 1



**PLUG**

		G1	SEE SHEET I	DIMENSIONS SHOWN METRIC INCH		▽ = 0 ▼ = 0		REVISE ONLY ON CAD SYSTEM	
		G	SEE SHEET I	UNLESS OTHERWISE SPECIFIED		TOLERANCES UNLESS OTHERWISE SPECIFIED		TITLE	
		E	SEE SHT. I	INCH METRIC		3 PLACE ± .007 ---		.125/(3.17) HOUSING,	
		C	SEE SHT. I	2 PLACE ± .010 ± 0.18		1 PLACE --- ± 0.25		PLUG AND RECEPTACLE,	
		B	SEE SHT. I	DRAFT ANGLES APPLICABLE MUST		REMAIN WITHIN DIMENSIONS		I CKT.	
		A	SEE SHT. I	DRAWN BY		GEP		MOLEX INCORPORATED	
		I	SEE SHT. I	CHKD. BY		RW		SHEET NO. 2	
		LTR.	REVISIONS	APP'D. BY		RAS		DATE 5/6/88	
		LTR.	REVISIONS	SCALE		2 : 1		PART NO. SD-42179-1	
				FILE NAME		542179.H2		DRAWING NO. CP	
				THIS DRAWING CONTAINS INFORMATION THAT IS PROPRIETARY TO		MOLEX INC. AND SHOULD NOT BE USED WITHOUT WRITTEN PERMISSION		CP	

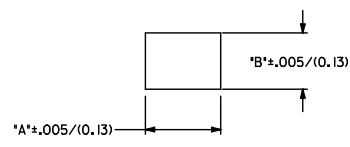
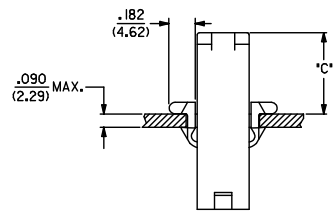
13 12 11 10 9 8 7 6 5 4 3 2 1 NO P.S.1

42179

A

- PLUG		
PART NO.	ENG. NO.	
03-12-2016	42179-IP1	
03-12-2015	42179-IP	
03-12-7014	42179-IPRD	OBSOLETE
03-12-7015	42179-IPBU	OBSOLETE
03-12-7016	<b>42179-IPRD</b>	OBSOLETE
03-12-2071	42179-IPBK	OBSOLETE
03-12-2072	42179-IPGN	OBSOLETE
03-12-2073	42179-IPYW	OBSOLETE
03-12-2074	42179-IPBU	OBSOLETE
03-12-2075	42179-IPIGY	OBSOLETE

RECEPTACLE		
PART NO.	ENG. NO.	
03-12-1016	42179-IR1	
03-12-6014	42179-IRIRD	OBSOLETE
03-12-6015	42179-IRIBU	OBSOLETE
03-12-2081	42179-IRIBK	OBSOLETE
03-12-2082	42179-IRIGN	OBSOLETE
03-12-2083	42179-IRIYW	OBSOLETE
03-12-2084	42179-IRIGY	OBSOLETE



HOUSING	DIM. *A*	DIM. *B*	DIM. *C*
PLUG	.521/(13.23)	.440/(11.18)	.55/(14.0)

**LEGEND:**

42179-\*\*\*\*\*

CIRCUIT SIZE: \_\_\_\_\_

HOUSING TYPE: \_\_\_\_\_

P = PLUG

R = RECEPTACLE

MOUNTING EAR OPTION: \_\_\_\_\_

BLANK = WITH PREBENT EARS, PLUG ONLY

I = WITHOUT EARS

COLOR: \_\_\_\_\_

BLANK = 94V-2; TRANSLUCENT NATURAL COLOR

AM=AMBER BK=BLACK BU=BLUE

BN=BROWN GY=GRAY GN=GREEN

OR=ORANGE RD=RED YW=YELLOW

MATERIAL: \_\_\_\_\_

BLANK = NYLON 6/6, U.L. 94V-2

**NOTES:**

- PART ACCEPTS A MAXIMUM .250/(6.35) INSULATION DIA.
- FOR USE WITH MOLEX .125/(3.17) DIAMETER SERIES TERMINALS EXCEPT THE I219/I220 SERIES.

<p><b>REMOVE OBSOLETE</b></p> <p>EC NO: UCP2016-4886</p> <p>DRWNGAPPELDWN 2016/06/29</p> <p>CHKDRKTPER 2016/06/29</p> <p>APPROCSMTH 2016/07/06</p>	<p>QUALITY SYMBOLS</p> <p>▽=0</p> <p>▽=0</p> <p>▽=0</p>	<p>GENERAL TOLERANCES (UNLESS SPECIFIED)</p> <table border="1"> <tr> <th></th> <th>mm</th> <th>INCH</th> </tr> <tr> <td>4 PLACES</td> <td>± .005</td> <td>± .0002</td> </tr> <tr> <td>3 PLACES</td> <td>± .007</td> <td>± .0003</td> </tr> <tr> <td>2 PLACES</td> <td>± 0.18</td> <td>± .010</td> </tr> <tr> <td>1 PLACE</td> <td>± 0.25</td> <td>± .010</td> </tr> <tr> <td>0 PLACE</td> <td>±</td> <td>±</td> </tr> </table>			mm	INCH	4 PLACES	± .005	± .0002	3 PLACES	± .007	± .0003	2 PLACES	± 0.18	± .010	1 PLACE	± 0.25	± .010	0 PLACE	±	±	<p>DIMENSION STYLE</p> <p>IN/MM</p>	<p>SCALE</p> <p>1:1</p>	<p>DESIGN UNITS</p> <p>INCH</p>	<p>THIRD ANGLE PROJECTION</p>
			mm	INCH																					
		4 PLACES	± .005	± .0002																					
		3 PLACES	± .007	± .0003																					
2 PLACES	± 0.18	± .010																							
1 PLACE	± 0.25	± .010																							
0 PLACE	±	±																							
<p>ANGULAR ±1/2°</p>		<p>DRAWN BY</p> <p>GEP</p>	<p>DATE</p> <p>1988/05/05</p>	<p>TITLE</p> <p>.125/(3.17) HOUSING PLUG AND RECEPTACLE 1 CIRCUIT</p>																					
<p>DRAFT WHERE APPLICABLE MUST REMAIN WITHIN DIMENSIONS</p>		<p>CHECKED BY</p> <p>RW</p>	<p>DATE</p> <p>1988/05/05</p>	<p><b>molex</b></p>																					
<p>SEE CHART</p>		<p>MATERIAL NO.</p> <p>SD-42179-1*</p>	<p>DOCUMENT NO.</p> <p>SD-42179-1*</p>	<p>SHEET NO.</p> <p>3 OF 3</p>																					