

Excellent Integrated System Limited

Stocking Distributor

Click to view price, real time Inventory, Delivery & Lifecycle Information:

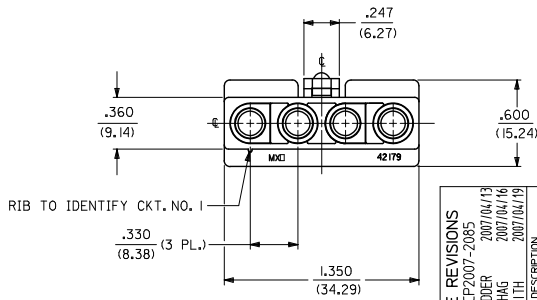
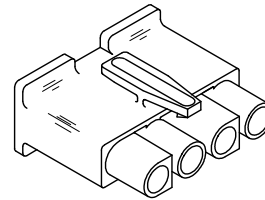
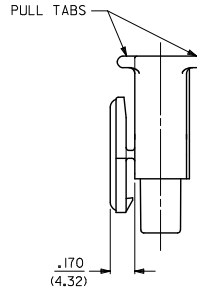
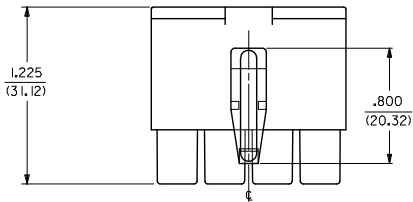
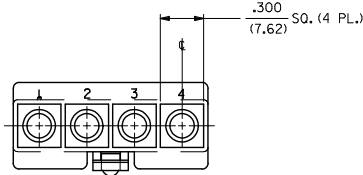
[Molex Connector Corporation](#)

[03-12-1046](#)

For any questions, you can email us directly:

sales@integrated-circuit.com

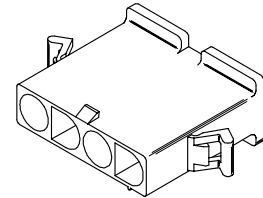
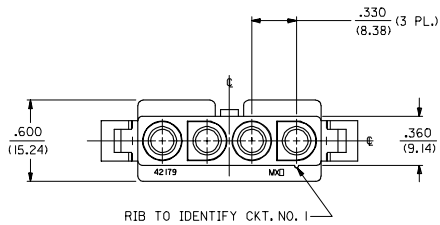
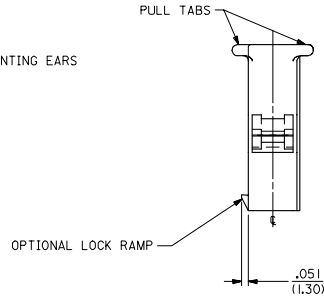
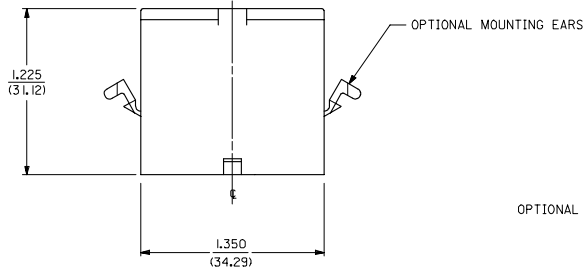
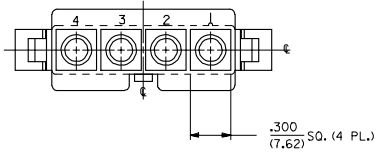
13 12 11 10 9 8 7 6 5 4 3 2 1



RECEPTACLE

3	I
2	I
1	I
SHT. REV.	

UPDATE REVISIONS EC NO: UCP2007-2085 DRAWN BY: 2/07/04/13 CHKD BY: 2/07/04/16 APPR: 2/07/04/19	QUALITY SYMBOLS ▽=0 ▽=0	GENERAL TOLERANCES (UNLESS SPECIFIED)		DIMENSION STYLE IN/MM		SCALE 2:1	DESIGN UNITS INCH	THIRD ANGLE PROJECTION
		4 PLACES ± --- ± --- 3 PLACES ± --- ± .007 2 PLACES ± 0.18 ± .010 1 PLACE ± 0.25 ± ---		DRAWN BY: GEP DATE: 1988/09/21 CHECKED BY: RW DATE: 1988/09/21 APPROVED BY: RAS DATE: 1988/09/21		TITLE .125/(3.17) HOUSING, PLUG AND RECEPTACLE 4 CKT .330/(8.38) CTRS.		
		ANGULAR ± 1°		MATERIAL NO. SEE CHART		DOCUMENT NO. SD-42179-4*		
		DRAFT WHERE APPLICABLE MUST REMAIN WITHIN DIMENSIONS		SIZE C		THIS DRAWING CONTAINS INFORMATION THAT IS PROPRIETARY TO MOLEX INCORPORATED AND SHOULD NOT BE USED WITHOUT WRITTEN PERMISSION		



PLUG

UPDATE TITLE BLOCK ELC NO: UCP2007-2085 DRAWN BY: 2007/04/13 CHK'D BY: CHKDALHAG 2007/04/16 APPROVED BY: 2007/04/19	QUALITY SYMBOLS ▽=0 ▽=0	GENERAL TOLERANCES (UNLESS SPECIFIED)		DIMENSION STYLE IN/MM	SCALE 2:1	DESIGN UNITS INCH	THIRD ANGLE PROJECTION		
		4 PLACES ±.005 ±.005	3 PLACES ±.007 ±.007	2 PLACES ±0.18 ±.010	1 PLACE ±0.25 ±.010	DRAWN BY: DEP DATE: 1988/09/21	CHECKED BY: RW DATE: 1988/09/21	APPROVED BY: RAS DATE: 1988/09/21	TITLE .125/(3.17) HOUSINGS, PLUG AND RECEPTACLE, 4 CKT .330/(8.38) CTRS.
		ANGULAR ±1/2°				MATERIAL NO. SEE CHART	DOCUMENT NO. SD-42179-4*	SHEET NO. 2 OF 3	
		DRAFT WHERE APPLICABLE MUST REMAIN WITHIN DIMENSIONS				THIS DRAWING CONTAINS INFORMATION THAT IS PROPRIETARY TO MOLEX INCORPORATED AND SHOULD NOT BE USED WITHOUT WRITTEN PERMISSION			

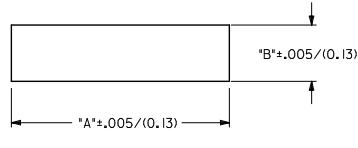
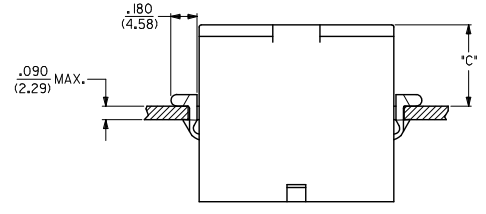
PLUG	
PART NO.	ENG. NO.
03-12-2046	42179-4P1
03-12-2045	42179-4P
03-12-7042	42179-4PYW
03-12-7043	42179-4PIYW
03-12-7040	42179-4PBK
03-12-7041	42179-4PIBK
03-12-7044	42179-4PIRD
03-12-7045	42179-4P2

RECEPTACLE	
PART NO.	ENG. NO.
03-12-1046	42179-4R1
03-12-6040	42179-4RIBK
03-12-6041	42179-4RIYW

OBSOLETE

LEGEND:
42179-4***

CIRCUIT SIZE: _____
HOUSING TYPE: _____
P = PLUG
R = RECEPTACLE
FEATURE OPTIONS: _____
BLANK = WITH MOUNTING EARS (PLUG ONLY)
1 = WITHOUT MOUNTING EARS
2 = WITH MOUNTING EARS (PLUG ONLY);
WITHOUT LOCKING RAMP
COLOR: _____
BLANK = 94V-2; TRANSLUCENT NATURAL COLOR
AM=AMBER BK=BLACK BU=BLUE
BN=BROWN GY=GRAY GN=GREEN
OR=ORANGE RD=RED YW=YELLOW



RECOMMENDED PANEL OPENING

HOUSING	DIM. "A"	DIM. "B"	DIM. "C"
PLUG	1.511/(38.38)	.440/(11.18)	.57/(14.5)

- NOTES:
1. MATERIAL: NYLON (PA), UL94V-2, COLOR-NATURAL (TRANSLUCENT)
 2. FINISH: NONE
 3. PRODUCT SPECIFICATION: NONE
 4. PACKAGING SPECIFICATION: PK-42179-001
 5. PART ACCEPTS A MAXIMUM .250/(6.35) INSULATION DIAMETER WIRE.
 6. FOR USE WITH ALL MOLEX .125/(3.17) DIAMETER SERIES TERMINALS EXCEPT THE 1219/1220 SERIES.
 7. PARTS CONFORM TO CLASS B REQUIREMENT OF COSMETIC SPECIFICATION PS-45499-002

OBS. P/N 03-12-7044 EC NO. UCP2007-2085 DRAWN BY 7/07/04/13 CHKD BY 7/07/04/16 APPRD BY 7/07/04/19	QUALITY SYMBOLS ▽=0 ▽=0	GENERAL TOLERANCES (UNLESS SPECIFIED)		DIMENSION STYLE IN/MM		SCALE 2:1	DESIGN UNITS INCH	THIRD ANGLE PROJECTION
		4 PLACES ± --- ± ---	3 PLACES ± --- ± .007	2 PLACES ± 0.18 ± .010	1 PLACE ± 0.25 ± ---	ANGULAR ± 1 °	DRAWN BY GEP 1988/09/21	
DRAFT WHERE APPLICABLE MUST REMAIN WITHIN DIMENSIONS		SEE CHART		MATERIAL NO.		DOCUMENT NO.		SHEET NO.
								3 OF 3