

Excellent Integrated System Limited

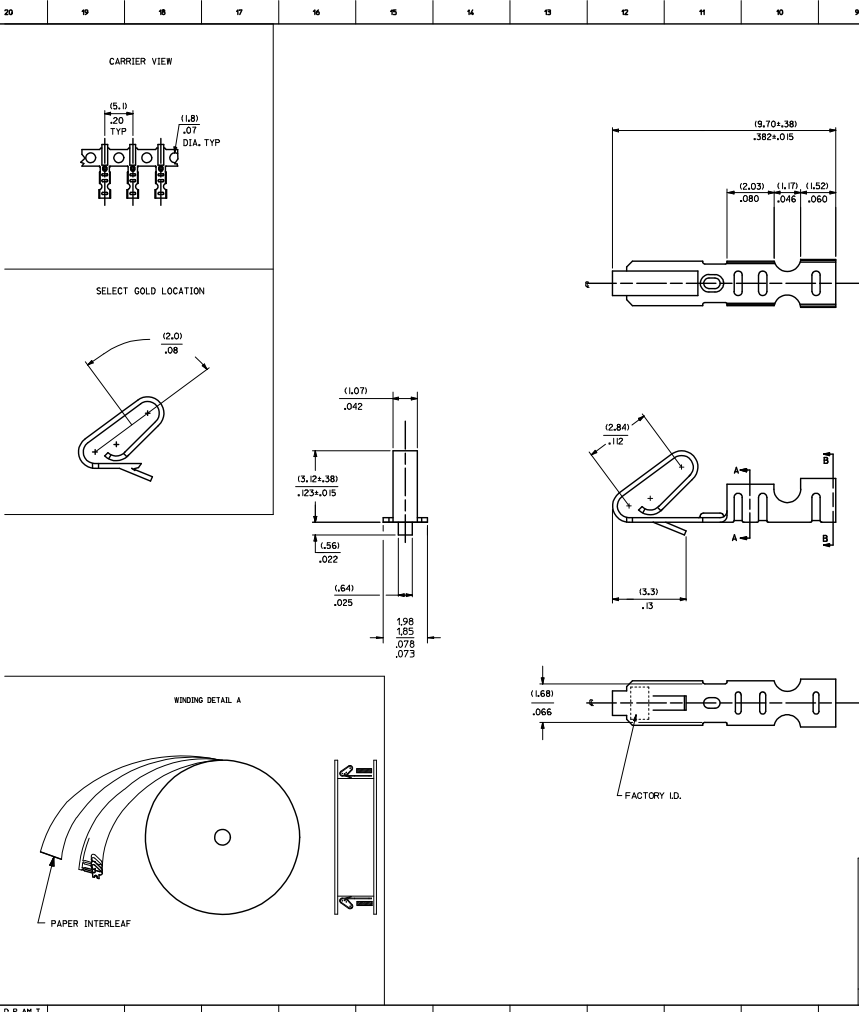
Stocking Distributor

Click to view price, real time Inventory, Delivery & Lifecycle Information:

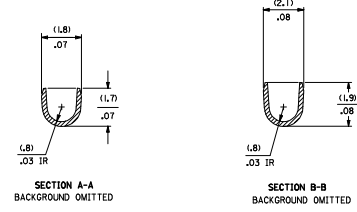
[Molex Connector Corporation](#)
[0008520123](#)

For any questions, you can email us directly:

sales@integrated-circuit.com



- NOTES
1. MATERIAL: (0.20)/.008 THICK PHOS BRONZE
 2. FINISH: 222 - OVERALL MATTE TIN: (0.00254)/.000100 MIN. TIN OVER (0.00127)/.000050 MIN. NICKEL
P609 - OVERALL HOT TIN DIP: (0.00254)/.000100 MIN. OVERALL NICKEL UNDERPLATE: (0.00127)/.000050 MIN.
231 - SELECT GOLD: (0.00076)/.000050 MIN. SELECT MATTE TIN: (0.00254)/.000100 MIN. OVERALL NICKEL UNDERPLATE: (0.00127)/.000050 MIN.
550 - SELECT GOLD: (0.00051)/.000025 MIN. OVERALL GOLD FLASH: (0.000051)/.000025 MIN. OVERALL NICKEL UNDERPLATE: (0.00076)/.000030 MIN.
555 - SELECT GOLD: (0.00038)/.000015 MIN. OVERALL NICKEL UNDERPLATE: (0.00076)/.000030 MIN.
558 - SELECT GOLD: (0.00076)/.000030 MIN. OVERALL GOLD FLASH: (0.000051)/.000025 MIN. OVERALL NICKEL UNDERPLATE: (0.00127)/.000050 MIN.
561 - SELECT GOLD: (0.00076)/.000030 MIN. OVERALL NICKEL UNDERPLATE: (0.00127)/.000050 MIN.
 3. PRODUCT SPEC: PS-40-07
 4. PACKAGING SPECIFICATION: LOOSE TERMINALS PER PK-2759-001 CHAIN FORM TERMINALS PER PK-6459-001
 5. CRIMP IS FOR 22-30 GA WIRE WITH (1.57)/.082 DIA INSULATION MAX.
 6. INSERTION FORCE OF TERMINAL INTO (2.54)/.100 CENTERLINE CONNECTOR IS 2.5 LBS. MAX
 7. TERMINAL RETENTION IN HOUSING IS 28.7N / 6LBS MIN. WHEN PULLED AT THE RATE OF (125.4MM)/ 1 INCH PER MINUTE.
 8. DIMENSIONS GIVEN ABOVE CENTERLINES ARE SYMMETRICAL ABOUT THOSE CENTERLINES WITHIN HALF THE TOTAL TOLERANCE.
 9. THIS PART CONFORMS TO CLASS B REQUIREMENTS OF COSMETIC SPECIFICATION PS-45499-002



6459-****

FORM
L=LOOSE
A=CHAIN PER DETAIL A

PLATING
SEE NOTE 2

ADD PK-6459-001 EC NO. L16724-001 H1 CH/CHANDRAN 2013/07/18 APPRESENT/ 2013/07/18 APPROVED/ 2013/07/18	QUALITY SYMBOLS	GENERAL TOLERANCES (UNLESS SPECIFIED)	DIMENSION STYLE	SCALE	DESIGN UNITS	THIRD ANGLE PROJECTION	
	$\nabla=0$ $\nabla=0$ $\nabla=0$	mm INCH 4 PLACES ±--- ±--- 3 PLACES ±--- ±.010 2 PLACES ±.025 ±.014 1 PLACE ±.036 ±--- 0 PLACE ±--- ±---	M/M/IN DRAWN BY DATE SAMIEC 01/21/192 CHECKED BY DATE PATEL 01/21/192 APPROVED BY DATE FSMTH 2012/03/20	TITLE KK (2.54)/.100 CRIMP TERMINAL 22-30 GA WIRE SAME AS 2759 EXCEPT MATL	INCH	molex	SHEET NO. 1 OF 2
	DRAFT WHERE APPLICABLE MUST REMAIN WITHIN DIMENSIONS	MATERIAL NO. SEE CHART	DOCUMENT NO. SD-6459				
	THIS DRAWING CONTAINS INFORMATION THAT IS PROPRIETARY TO MOLEX INCORPORATED AND SHOULD NOT BE USED WITHOUT WRITTEN PERMISSION						

6459-(****)*

PART NO.	ENG. NO.
08-52-0101	6459-(P909)
08-52-0123	6459-(P909)L
08-65-0801	6459-(561)
	6459-(561)L
08-52-0118	6459-(222)
	6459-(222)L
08-65-0811	6459-(558)
08-65-0812	6459-(558)L
08-65-0815	6459-(555)
08-65-0816	6459-(555)L
08-65-0813	6459-(550)
08-65-0814	6459-(550)L
08-65-0817	6459-(231)
08-65-0818	6459-(231)L

SEE SHEET 1 EC NO. 067004-001 DRN/CHK/UPPER 2010/07/18 CHK/DR/REVISION 2010/07/18 APP/RES/SMITH 2010/07/24 H1 H1	QUALITY SYMBOLS	GENERAL TOLERANCES (UNLESS SPECIFIED)	DIMENSION STYLE	SCALE	DESIGN UNITS	THIRD ANGLE PROJECTION	
	$\nabla=0$ $\nabla=0$ $\nabla=0$	mm INCH 4 PLACES ±--- ±--- 3 PLACES ±--- ±.010 2 PLACES ±0.25 ±.014 1 PLACE ±0.36 ±--- 0 PLACE ±--- ±---	MM/IN	1:1	INCH	DRAWN BY DATE SAMIEC 01/21/92 CHECKED BY DATE PATEL 01/21/92 APPROVED BY DATE FSMITH 2012/03/20	TITLE KK (2.54)/.100 CRIMP TERMINAL 22-30 GA WIRE SAME AS 2759 EXCEPT MATL
	ANGULAR ±1/2° DRAFT WHERE APPLICABLE MUST REMAIN WITHIN DIMENSIONS	MATERIAL NO. SEE CHART SIZE D THIS DRAWING CONTAINS INFORMATION THAT IS PROPRIETARY TO MOLEX INCORPORATED AND SHOULD NOT BE USED WITHOUT WRITTEN PERMISSION	DOCUMENT NO. SD-6459	SHEET NO. 2 OF 2			
	molex						