

## Excellent Integrated System Limited

Stocking Distributor

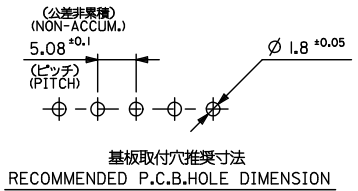
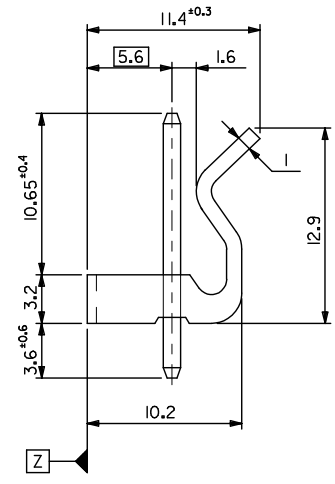
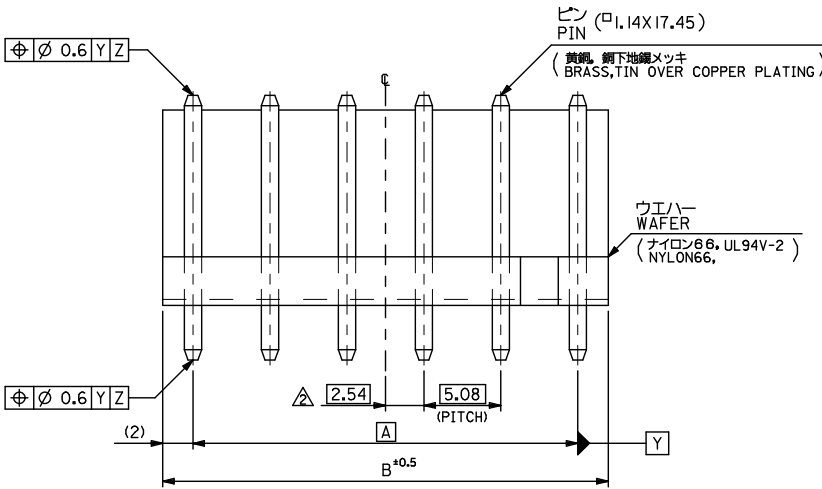
Click to view price, real time Inventory, Delivery & Lifecycle Information:

[Molex Connector Corporation](#)  
[0010321061](#)

For any questions, you can email us directly:

[sales@integrated-circuit.com](mailto:sales@integrated-circuit.com)

10 9 8 7 6 5 4 3 2 1



49.72	45.72	10-32-1101	5281-10A	10
44.64	40.64	-109I	-09A	9
39.56	35.56	-108I	-08A	8
34.48	30.48	-107I	-07A	7
29.4	25.4	-106I	-06A	6
24.32	20.32	-105I	-05A	5
19.24	15.24	-104I	-04A	4
14.16	10.16	-103I	-03A	3
9.08	5.08	10-32-102I	5281-02A	2
B	A	EDP NO.	ENG. NO.	極数 NO. OF CKTS.

注記  
NOTE

- I ウエハーのそりは、長さ 25.4 に対して 0.24 MAX.. CAMBER MUST BE 0.24 MAX. PER 25.4
- △ 全極数が偶数の場合のみ適用。 TO BE APPLIED ONLY WHEN ALL CKTS. ARE EVEN.

REVISED EC NO. J2014-1442 DRAWN BY TYAJIMA01 2014/03/25 CHKD BY KASAKAWA 2014/03/26 APPR. BY NUKITA 2014/03/26	GENERAL TOLERANCES (UNLESS SPECIFIED)		DIMENSION STYLE MM ONLY		SCALE 4:1	DESIGN UNITS METRIC	THIRD ANGLE PROJECTION	
	10 UNDER	± 0.15	DRAWN BY TYAJIMA01	DATE 2014/03/13	TITLE KK 5.08 WAFER ASSY WITH LOCK			
	10 OVER 30 UNDER	± ---	CHECKED BY KASAKAWA	DATE 2014/03/13				
	30 OVER	± ---	APPROVED BY NUKITA	DATE 2014/03/13				
ANGULAR ±1 °		DRAFT WHERE APPLICABLE MUST REMAIN WITHIN DIMENSIONS		MATERIAL NO. SEE DRAWING		DOCUMENT NO. SD-5281-001	SHEET NO. 1 OF 1	
THIS DRAWING CONTAINS INFORMATION THAT IS PROPRIETARY TO MOLEX INCORPORATED AND SHOULD NOT BE USED WITHOUT WRITTEN PERMISSION								

10 9 8 7 6 5 4 3 2 1