

Excellent Integrated System Limited

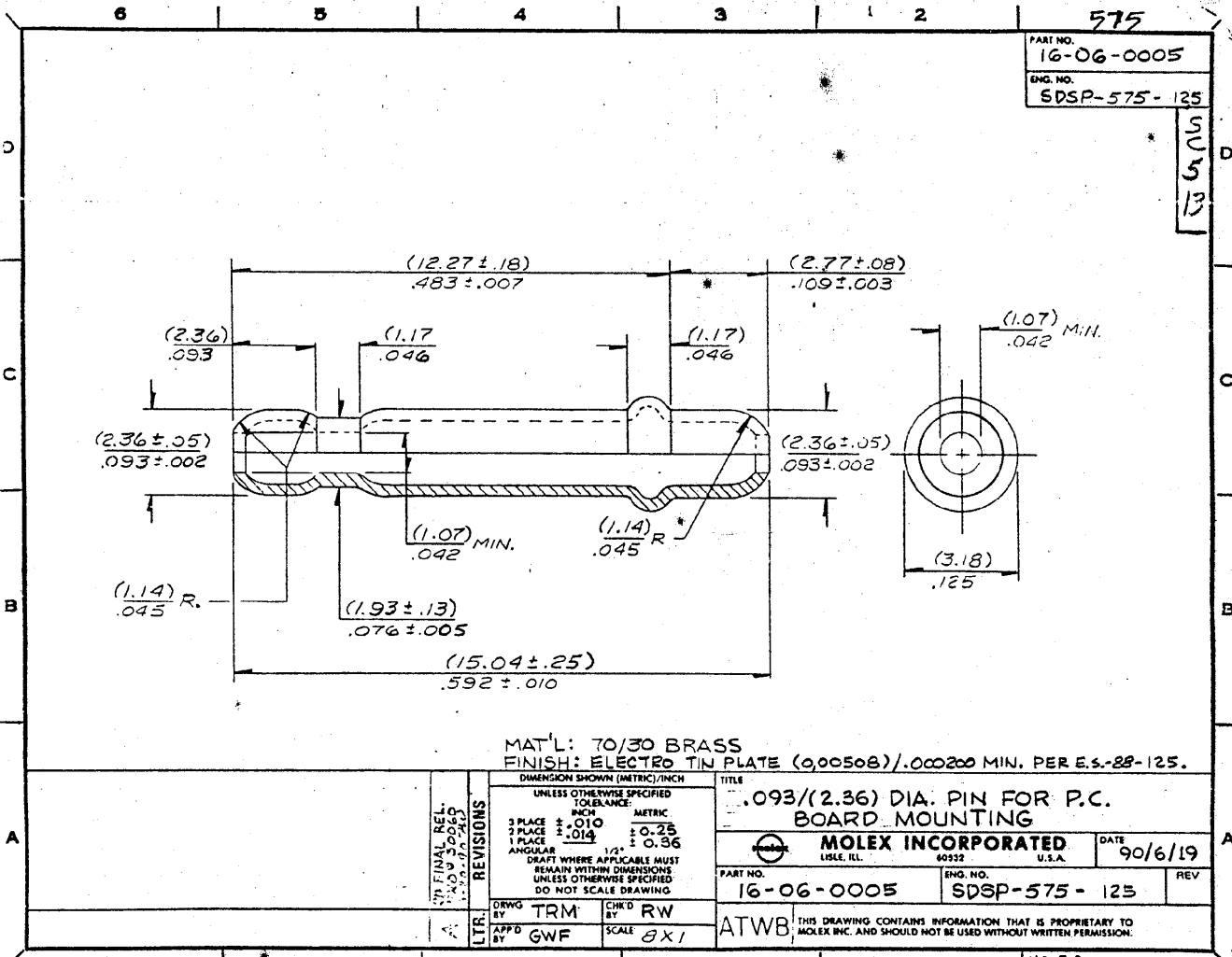
Stocking Distributor

Click to view price, real time Inventory, Delivery & Lifecycle Information:

[Molex Connector Corporation](#)
[16-06-0005](#)

For any questions, you can email us directly:

sales@integrated-circuit.com



PART NO.
16-06-0005
ENG. NO.
SDSP-575-125

575
5
13

MAT'L: 70/30 BRASS
FINISH: ELECTED TIN PLATE (0.00508)/.000200 MIN. PER E.S.-88-125.

DIMENSION SHOWN (METRIC)/INCH UNLESS OTHERWISE SPECIFIED TOLERANCE: 3 PLACE ±.010 2 PLACE ±.014 1 PLACE ±.014 ANGULAR 1/2° DRAFT WHERE APPLICABLE MUST REMAIN WITHIN DIMENSIONS UNLESS OTHERWISE SPECIFIED DO NOT SCALE DRAWING	INCH	METRIC
	3 PLACE ±.010	± 0.25
	2 PLACE ±.014	± 0.36
	1 PLACE ±.014	

TITLE 0.093/(2.36) DIA. PIN FOR P.C. BOARD MOUNTING	
MOLEX INCORPORATED LIBL, ILL. 60522 U.S.A.	DATE 90/6/19
PART NO. 16-06-0005	ENG. NO. SDSP-575-125
REV	

DRWG BY TRM	CHK'D BY RW
APP'D BY GWF	SCALE 8 X 1

ATWB THIS DRAWING CONTAINS INFORMATION THAT IS PROPRIETARY TO MOLEX INC. AND SHOULD NOT BE USED WITHOUT WRITTEN PERMISSION.